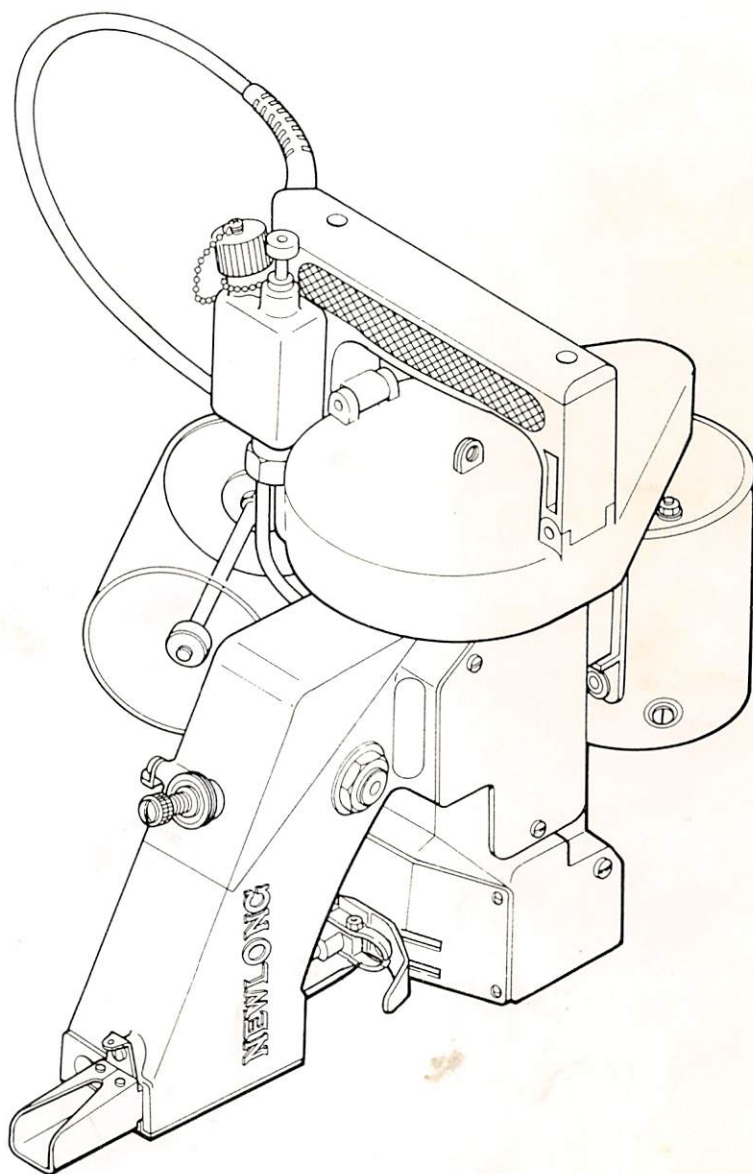


NEWLONG

MODEL **NP-7A**
(NP-7H)

PORTABLE FILLED BAG CLOSING MACHINE

INSTRUCTION MANUAL/PARTS LIST



ニューロング株式会社
NEWLONG MACHINE WORKS, LTD.

No.14

CONTENTS

1. SPECIFICATIONS	2
2. PREPARATION FOR START	3
1. Oiling	3
2. Needle Setting	3
3. Threading	3
3. START	4
4. ADJUSTMENTS	5
1. Thread Tension	5
2. Position of Needle and Loper	5
3. Position of Feed Dog	5
4. Pressure of Presser Foot	5
5. REPLACING PARTS.....	6
6. MAINTENANCE & LUBRICATION.....	7
7. LUBRICATOR	7
1. Operation	7
2. Maintenance	7
3. Troubleshooting	8
8. ORDERING PARTS	9
NUMERICAL INDEX OF PARTS	26
DIAGRAM OF SCREW, NUT & WASHER	28

1. SPECIFICATIONS

TECHNICAL DETAILS

Speed (sec/bag)	5-6
Seam.	Single Thread Chain Stitch
Stitch Range (mm.)	7.2 (fixed)
Revolution (rpm.)	1,600±125
Needle.	DN x 1- # 25
Thread (vinyon, synthetic or cotton)	20/6
Drive Motor	60W
Power Supply	110, 220 or 240V., A.C. 12V, 24V., D.C. (specify one.) 50-60Hz, Single Phase
Net Weight (kg).	5.2 Including Thread Cone, Shoulder Belt.
Machine Dimension (mm.)	360(L) x 245(W) x 315(H)
Packing Dimension (cft.).	2.5

STANDARD ACCESSORIES

1. Needles DN x 1- # 25.	5 pcs.
2. Thread Vinyon 20/6	1 roll
3. Screw Driver.	1 pce.
4. Needle Bar Spanner	1 pce.
5. Oil	1 can
6. Carbon brush	2 pcs.

2. PREPARATION FOR START

1. Oiling (Fig. 1)

Oiling is imperative to keep the machine in good operating condition. Fill oil in the reservoir (capacity 45 cc). To feed oil, push the button of the lubricator. One push feeds 0.08 cc of oil, which would normally service for several hours of operation. Do not run the machine out of oil, otherwise it will break down.

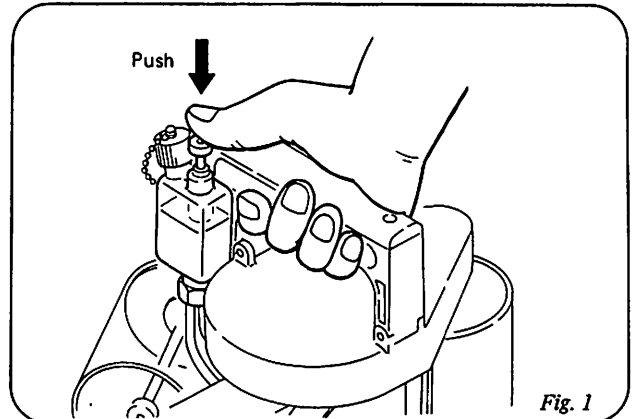


Fig. 1

2. Needle Setting (Fig. 2, 3, 4)

Turn the pulley until Needle Bar reaches its highest position. Loosen Needle Bar Clamping Nut, and set Needle in the Bar as deep as it will go.

Be sure to set a Needle with its concave part facing correctly toward the Loper. Fix Clamping Nut tightly, otherwise Needle may come loose during operation and break.

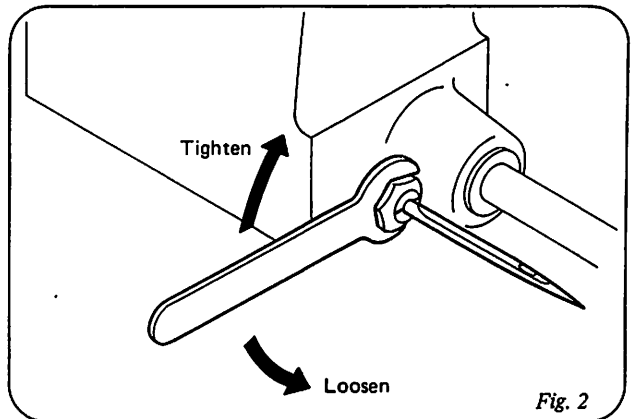


Fig. 2

3. Threading (Fig. 5)

The machine is delivered being threaded to show you proper threading of the machine, which is shown in Fig. 5, for identification. Follow the guide numbers 1 to 6 of Fig. 5.

- | | |
|-------------------------|-----------------|
| ① Thread Eyelet | ⑤ Needle Bar |
| ② Thread Tension Eyelet | ⑥ Thread Eyelet |
| ③ Tension Disc | ⑦ Needle |
| ④ Thread Eyelet | |

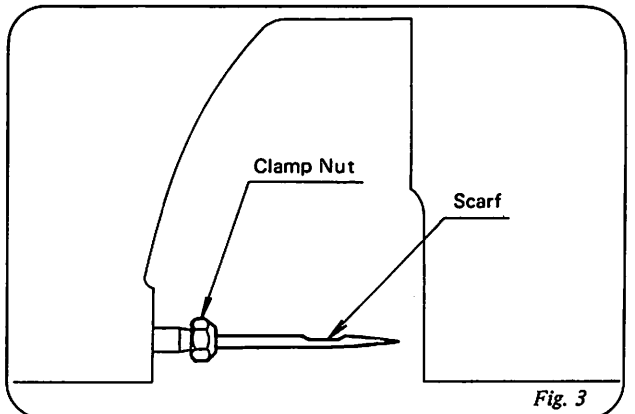


Fig. 3

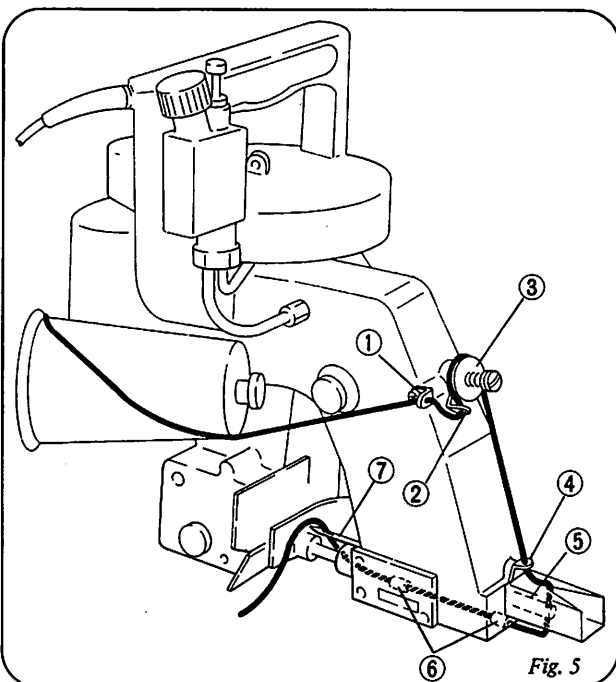


Fig. 5

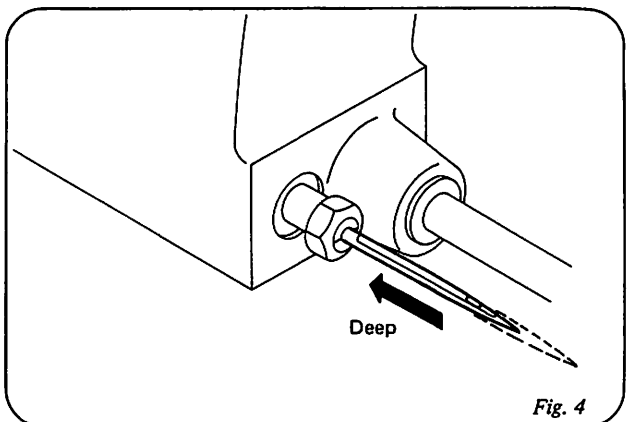


Fig. 4

3. START

Before starting, make sure that the supply voltage accords with the specification of the motor.

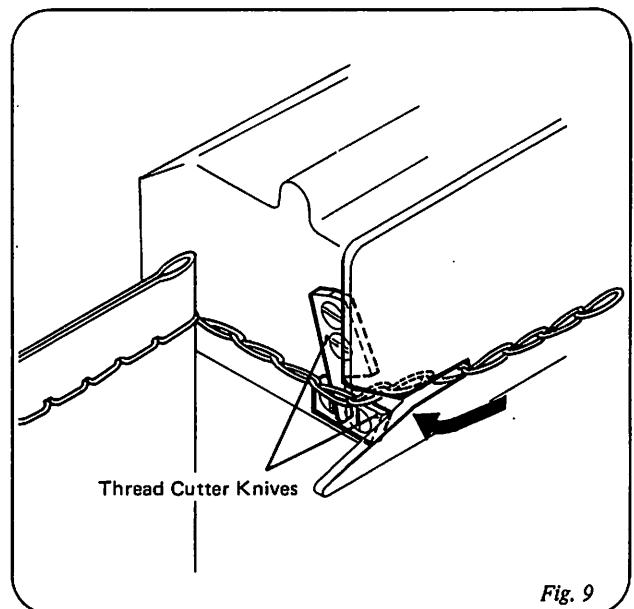
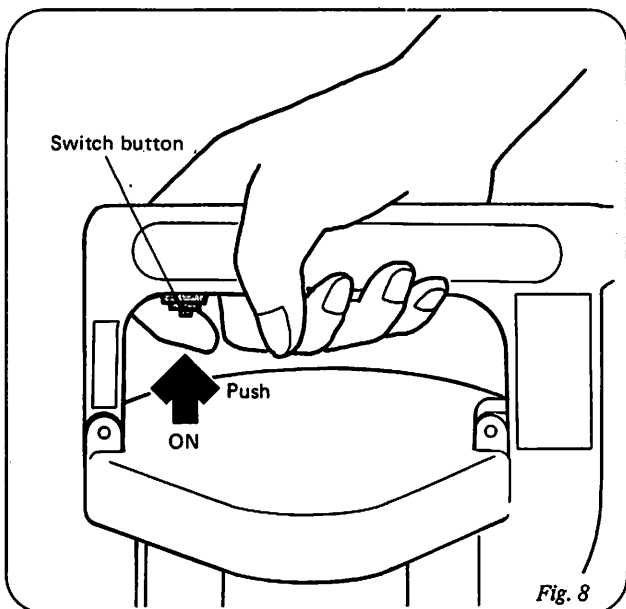
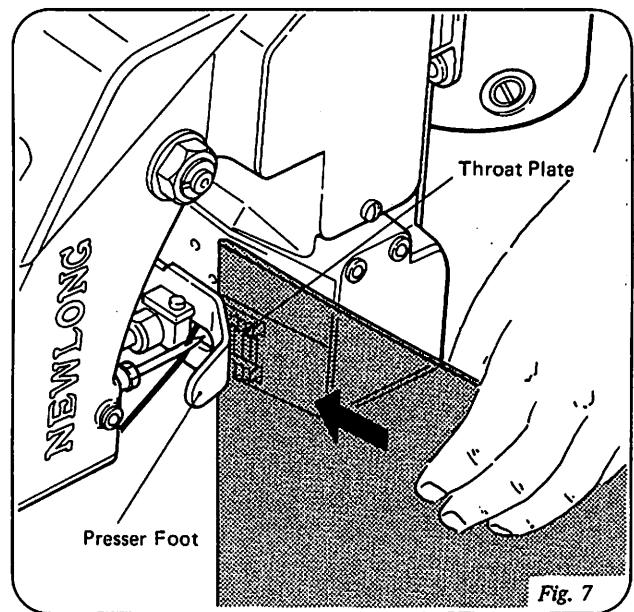
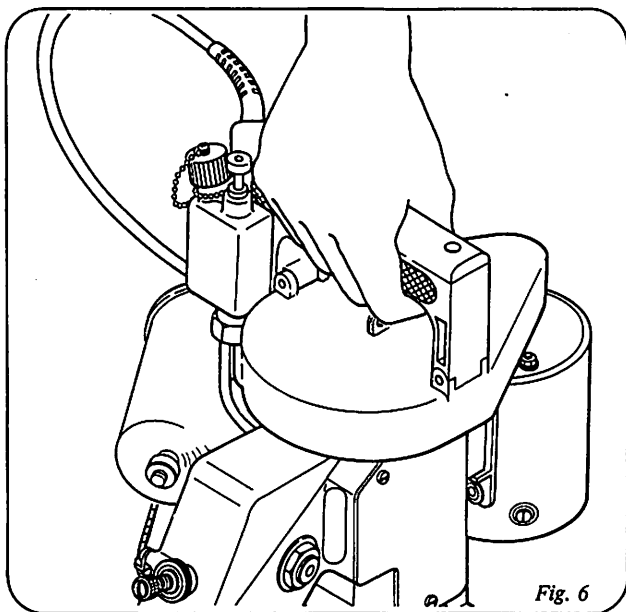
Hold the machine in your right hand and place your index finger on the switch button on the handle. (Fig. 6)

Hold the bag in your left hand lightly and insert the bag mouth between Feed Dog and Presser Foot. (Fig. 7)

Run the machine while keeping the bag straight. Never pull or pull back the bag.

After closing, the thread is cut by the built-in nibbler type cutter.

When cutting the thread, leave at least 3 cm long extended tail to prevent the unwilling loosening of the seam. (Fig. 9)



Run the machine with empty bags and make sure you are well versed in its operation before entering into actual operation.

4. ADJUSTMENTS

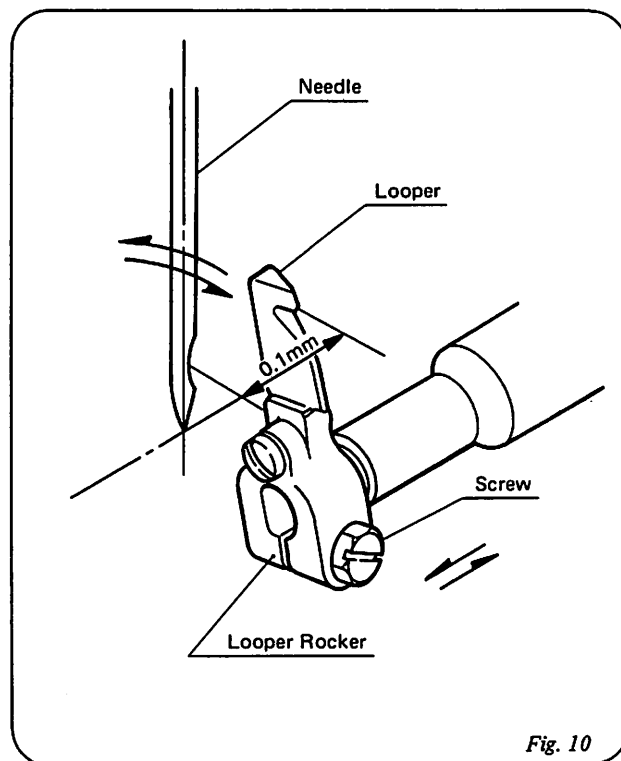
1. Thread Tension

Thread tension is adjustable by turning the Thread Tension Nut.

Turn the Nut clockwise for tighter tension and counter-clockwise for looser.

2. Position of Needle and Loper (Fig. 10)

Looper must pass the concave part of Needle with clearance of 0.1 mm as shown in Fig. 10. Adjustment of the clearance can be done after loosening the screw of Loper Rocker.

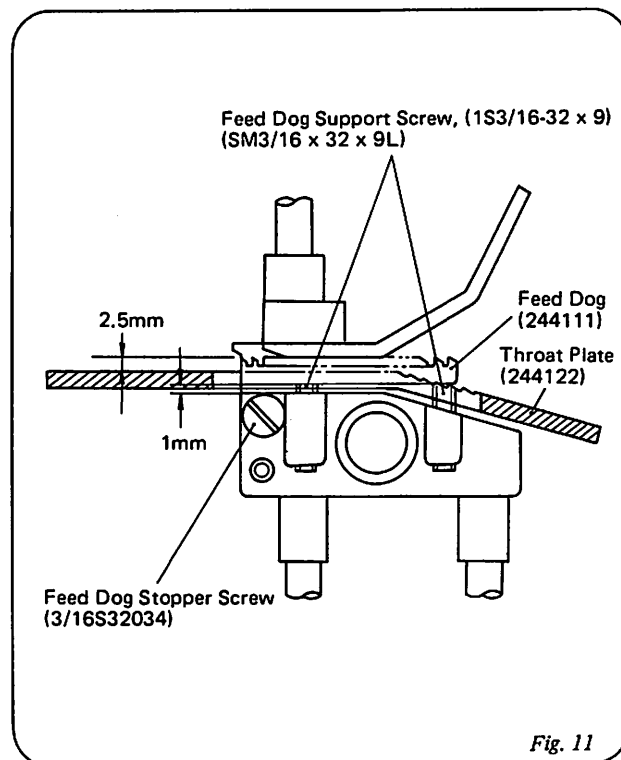


3. Position of Feed Dog

Feed Dog should be 2.5 mm above throat plate at its highest position as shown in Fig. 11. The height of Feed Dog is determined by the height of Feed Dog Support Screws (4 pcs. in all).

4. Pressure of Presser Foot

When to adjust the pressure of Presser Foot, take out Needle Bar Guard and loosen Screw of Presser Bar Connection. Move up Presser Bar to increase the pressure and down to decrease. After the adjustment, tighten the Screw firmly.



5. REPLACING PARTS

For replacement or adjustment of Ball Rod, refer to Fig. 12.

Take out Screw ① and disconnect Rod End ② from Needle Bar Lever ③. After loosening the Nut ④, adjust the clearance between Connecting Rod ⑤ and Rod End ②, so that Needle Bar moves in the center of the clearance between the upper and lower Presser Bar Bushings. (Needle Bar stroke is 37 mm).

To fix Eccentric Cam ⑦ on Main Shaft ⑧, tighten the Screws ⑨ and ⑨ on Main Shaft ⑧ (Eccentric Cam ⑦ should contact Spacer ⑩ slightly).

The position of Needle is adjusted so that the distance between the point of Needle (at its highest position) and Throat Plate is 13 mm, after loosening screw on Needle Bar Connection Assembly ⑥ in Fig. 12.

- ① Screw 11/64S40089
- ② Rod End 6APOS8
- ③ Needle Bar Lever 242051A
- ④ Nut 1N8
- ⑤ Connecting Rod Assembly 242011A
- ⑥ Needle Bar Connection Assembly 242101A
- ⑦ Eccentric Cam (part of Connecting Rod Assembly) 242011
- ⑧ Main Shaft 241101
- ⑨ ⑨ Screw 11/64S40001
- ⑩ Spacer 241161

Adjust Looper Drive Cam ③ when necessary as follows: (Refer to Fig. 13.).

- a) Apply the Screws ② and ② on the taper of Main Shaft ①.
- b) Adjust Arm (B) ④, so that Looper Drive Cam ③ and Arm (A) ⑤ move smoothly. After adjusting, fix the Screw ⑥ tightly.
- c) The clearance between Looper Drive Cam ③ and Arm ⑤ is effected by Spring ⑦. Loosen Screw ⑨ and turn Spring Supporter ⑧ to adjust the pressure of Spring ⑦. After adjusting, tighten the Screw ⑨ to fasten Spring Supporter ⑧.

- ① Main Shaft 241101
- ② ② Screw 15/64S28524
- ③ Looper Drive Cam 243012
- ④ Looper Rocker Shaft Arm (B) 243081
- ⑤ Looper Rocker Shaft Arm (A) 243071
- ⑥ Screw for Looper Rocker Shaft Arm (B) 11/64S40009
- ⑦ Spring 243131
- ⑧ Spring Supporter 243121
- ⑨ Screw for Spring Supporter Block 9/64S40035
- ⑩ Spring Supporter Block 243111

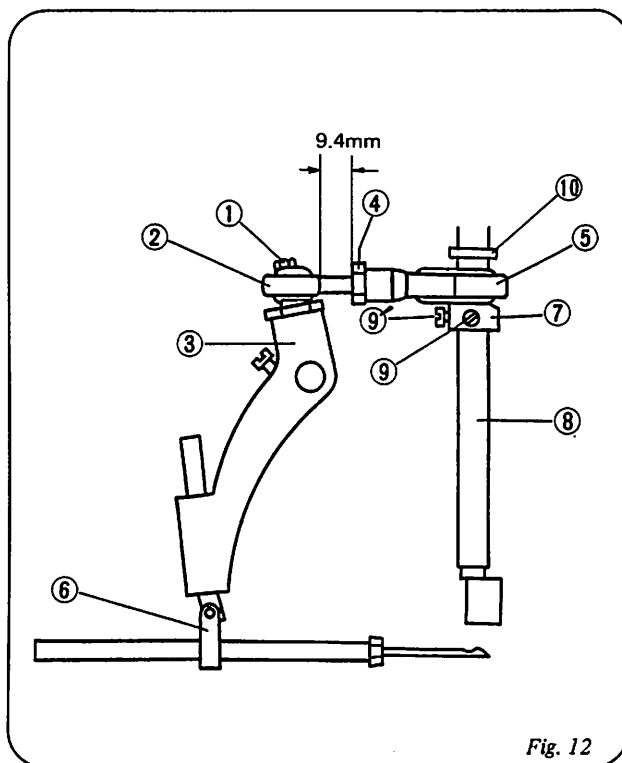


Fig. 12

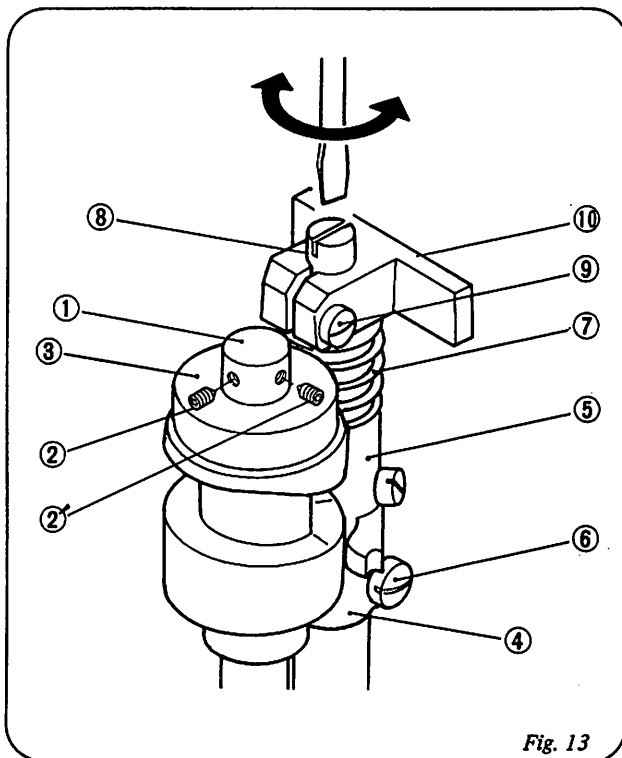


Fig. 13

6. MAINTENANCE & LUBRICATION

Clean the machine at the end of the day's work. Wipe dust and other foreign matter off the Feed Dog teeth, Looper and Throat Plate eyelets where they are easily gathered.

Care should be taken to keep the machine free from rust, especially when to leave it unused for some time.

Recommended lubricants are Shell X-100, Motor Oil 10W/30, Shell Vitria Oil 31 or the equivalent. For operation and maintenance of the lubricator, refer to Section 7.

Important !

When adjusting the machine or replacing parts, always disconnect the Electric Cord from the power source. This is important in view of safety to the operator and adjuster.

7. LUBRICATOR

1. Operation

The lubricator comprises a pump and a reservoir. The reservoir holds max 45 cc of oil. (Effective oil volume is 28 cc.)

To operate the lubricator:

1. First unscrew the reservoir cap by half a turn. *
2. Push the button to its lowest position (stroke: 12mm).
3. When released, the button will automatically return to its original position.
4. Lastly, tighten the cap to prevent oil leak during operation.

* Repeated working on the button without first loosening the cap may produce negative pressure in the reservoir, and the dust in the atmosphere may be easily introduced in it when the cap is loosened.

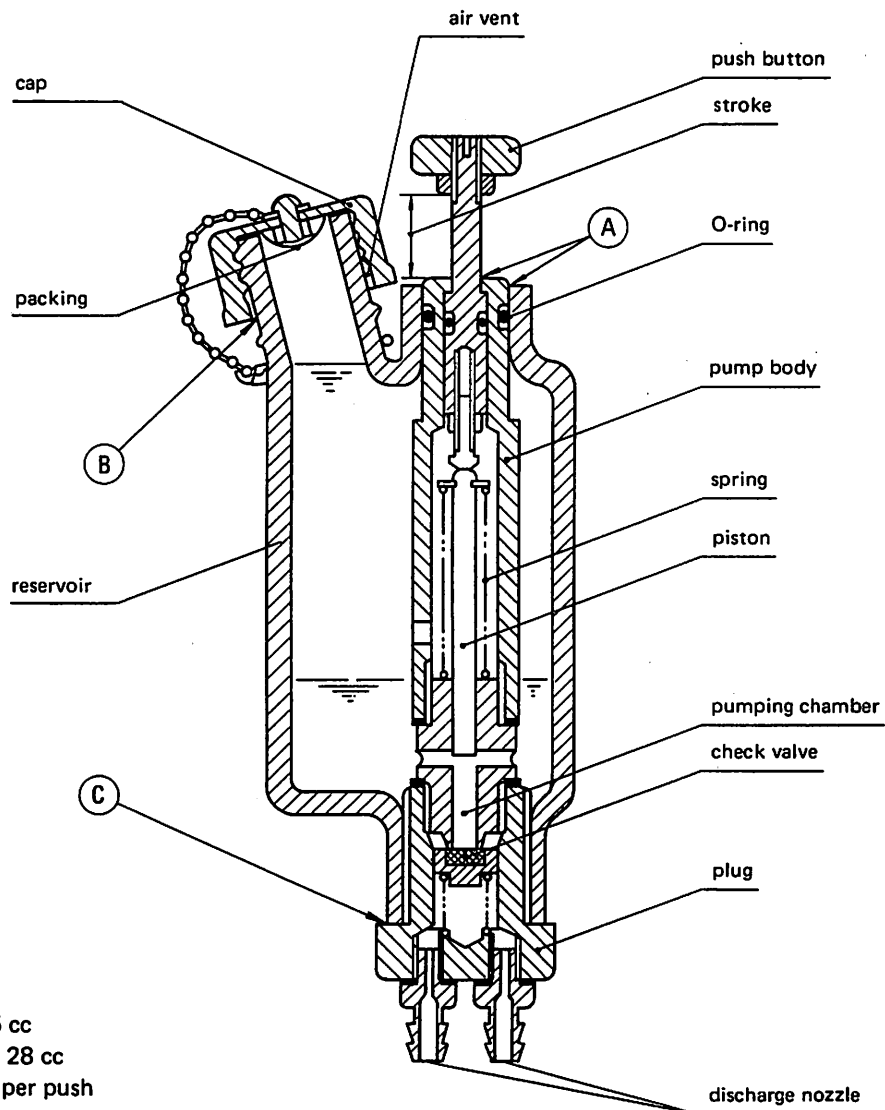
2. Maintenance

1. Keep off dust or foreign matter when to fill oil (They may cause jamming of the piston and the check valve).
2. Rate of discharge is fixed and not adjustable (0.08 cc per push).
3. At high temperatures, grease may run along points (A). This is normal, grease being used when the lubricator was assembled in our plant.
4. Reservoir is made of high density polyethylene. Keep off fire and refrain from using organic, benzene, or xylene chemicals for cleaning.
Check periodically for correct working of the pump. (Repeat oil feed and look at the oil through the discharge pipe.)

3. Troubleshooting

Trouble	Cause	Remedy
Oil not fed.	Low oil level.	Fill oil.
Full stroke movement not obtainable.	Dust attached on the interior wall of the pumping chamber.	Replace lubricator.
Button will not return.	Dust accumulated, or break of spring.	Replace lubricator.
Oil leak from (A)	Wornout or displaced seal of O-Ring.	Replace lubricator.
Oil leak from (B)	Wornout or displaced seal of packing.	Replace lubricator.
Oil leak from (C)	Loose plug.	Tighten plug or Replace lubricator.

PUSH-BUTTON LUBRICATOR Model: NP-7A



PISTON STROKE: 12 mm
 RESERVOIR CAPACITY: 45 cc
 EFFECTIVE OIL VOLUME: 28 cc
 DISCHARGE RATE: 0.08 cc per push

8. ORDERING PARTS

The parts list showing all the parts used in the machine is included in this book. Check the list, and specify parts numbers and quantities required clearly. Send your order to the nearest agent, distributor or one of our branch offices.

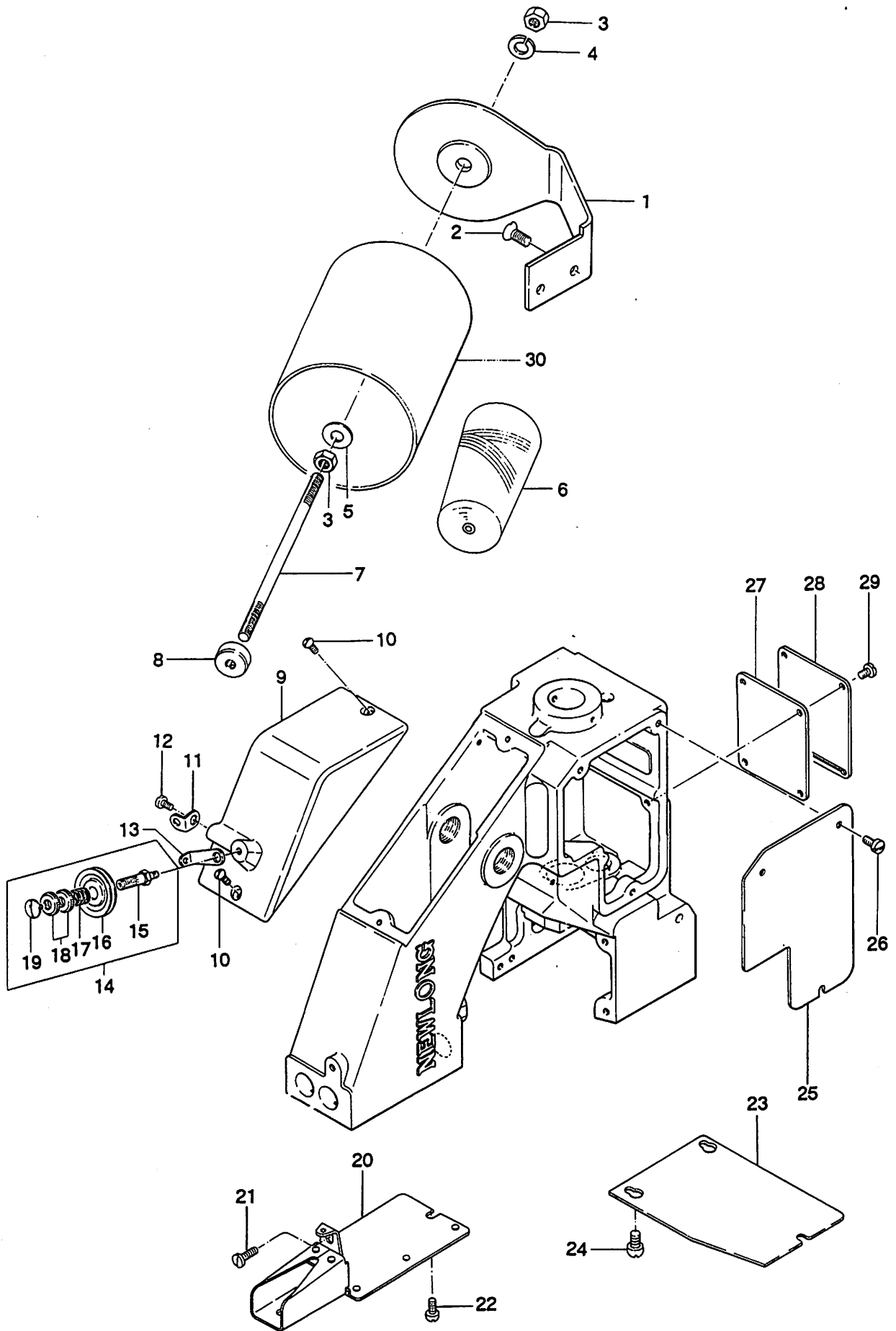
1. Description of each part and its stamp number is described in this parts list. Screws and nuts for parts are shown adjacent to the relevant parts. When ordering parts, describe clearly stamp number with its name of part.
2. The parts which have no Ref. Number can not be delivered independently; always order it as an assembly.
3. A set of assembled parts is represented by the stamp number of its main parts.
4. The last figure in the parts stamp number advances on each improvement of the parts.
5. Part No. described in [] of Remarks means old part No.

* The part list is subject to change without prior notice.

CONTENTS

(1) THREAD TENSION AND COVER PARTS	10
(2) BUSHINGS, OILINGS AND HANDLE PARTS	12
(3) NEEDLE BAR, PRESSER BAR AND DRIVING PARTS	14
(4) LOOPER DRIVING PARTS	16
(5) FEED DRIVING AND THREAD CUTTER PARTS	18
(6) MOTOR PARTS (For Totally Enclosed Type Motor)	20
(7) SPECIAL PARTS FOR NP-7H TYPE	22
(8) CREPE TAPE BINDING AND CUTTER PARTS (Special Order Parts)	24
NUMERICAL INDEX OF PARTS	26

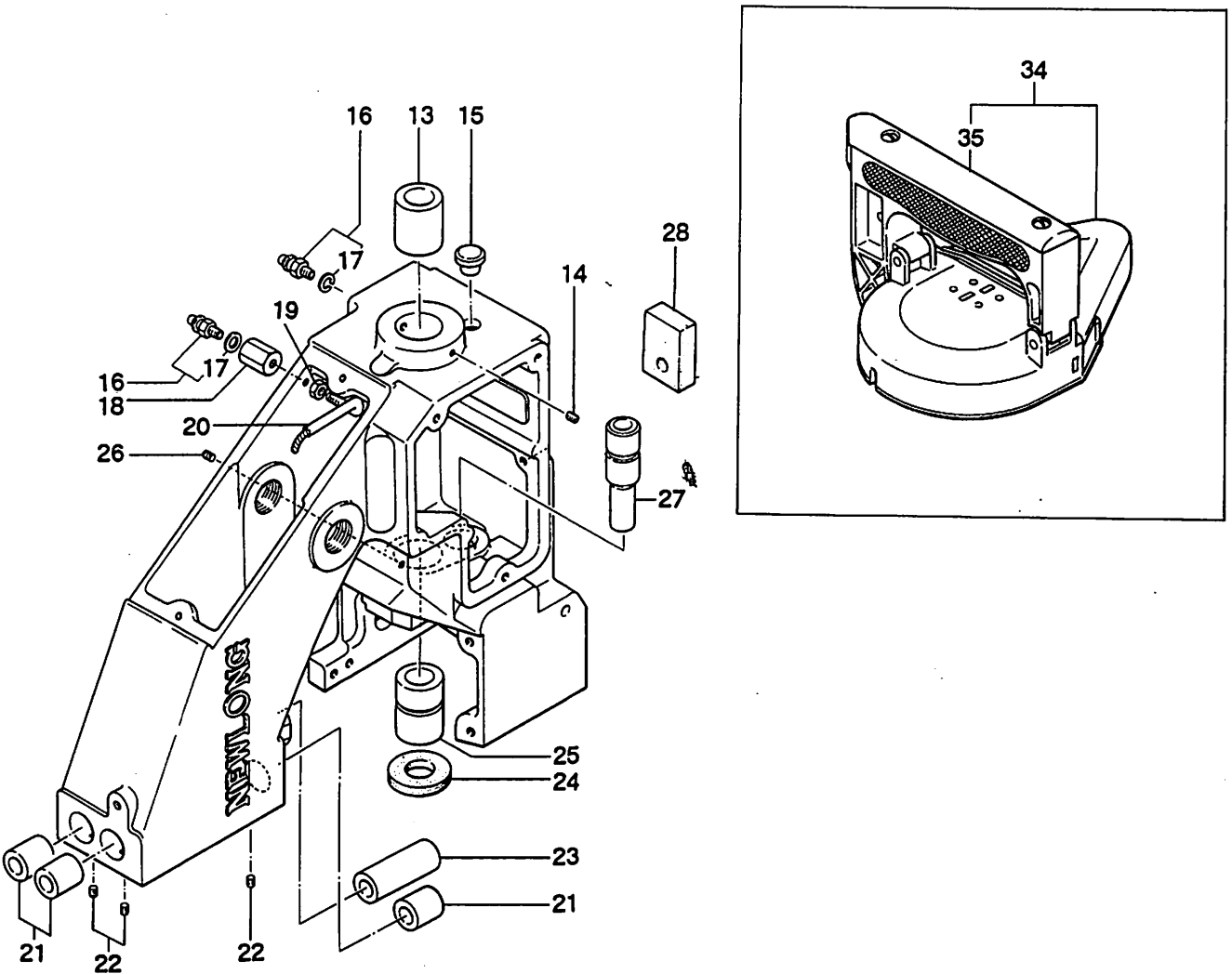
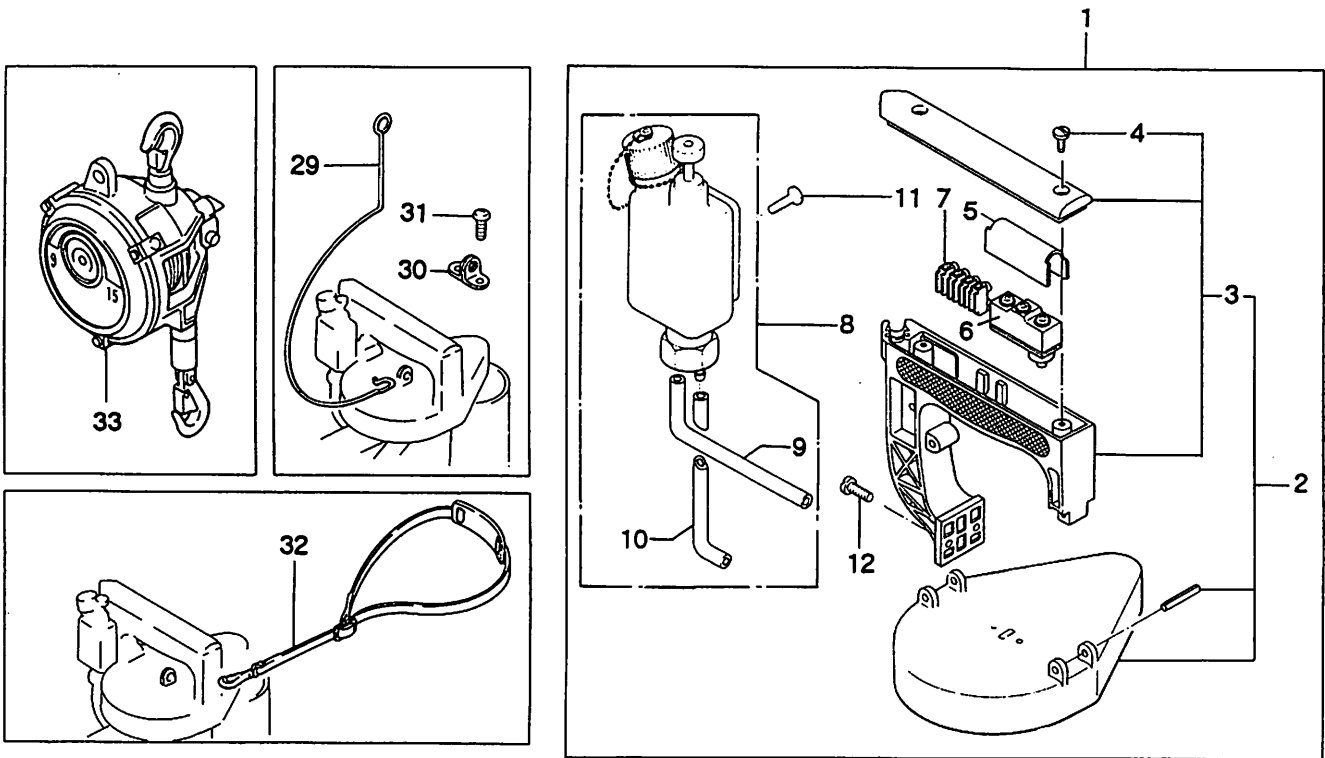
(1) THREAD TENSION AND COVER PARTS



(1) THREAD TENSION AND COVER PARTS

Ref.No.	Part No.	Description	Q'ty	Remarks
1	245042	Thread Stand	1	
2	15/64S28028	Screw, for 245042	2	
3	1N6	Nut	2	
4	3W6	Spring Washer	1	
5	2W6	Washer	1	
6	K01001	Thread	1	
7	245052	Thread Cone Clamping Rod	1	
8	245201	Thread Cone Clamping Nut	1	
9	245013	Top Cover	1	
10	9/64S40043	Screw, for 245013	2	
11	245261	Thread Eyelet	1	
12	11/64S40005	Screw, for 245261	1	
13	245071	Thread Tension Eyelet	1	
14	245081A	Thread Tension Assembly	1	(15~19)
15	245081	Tension Post	1	
16	065261	Tension Disc	2	
17	245101	Tension Spring	1	
18	245091	Tension Nut	2	
19	9/64S40011	Screw, for 245081A	1	
20	245033	Needle Bar Guard	1	
21	11/64S40005	Screw, for 245033	1	
22	9/64S40065	Screw, for 245033	2	
23	245222	Looper Cover	1	
24	9/64S40065	Screw, for 245222	3	
25	245022	Side Plate	1	
26	9/64S40005	Screw, for 245022	3	
27	245481	Gasket	1	
28	245302	Inside Cover	1	
29	9/64S40005	Screw, for 245302	4	
30	245181	Thread Cone Cover	(1)	Special Order

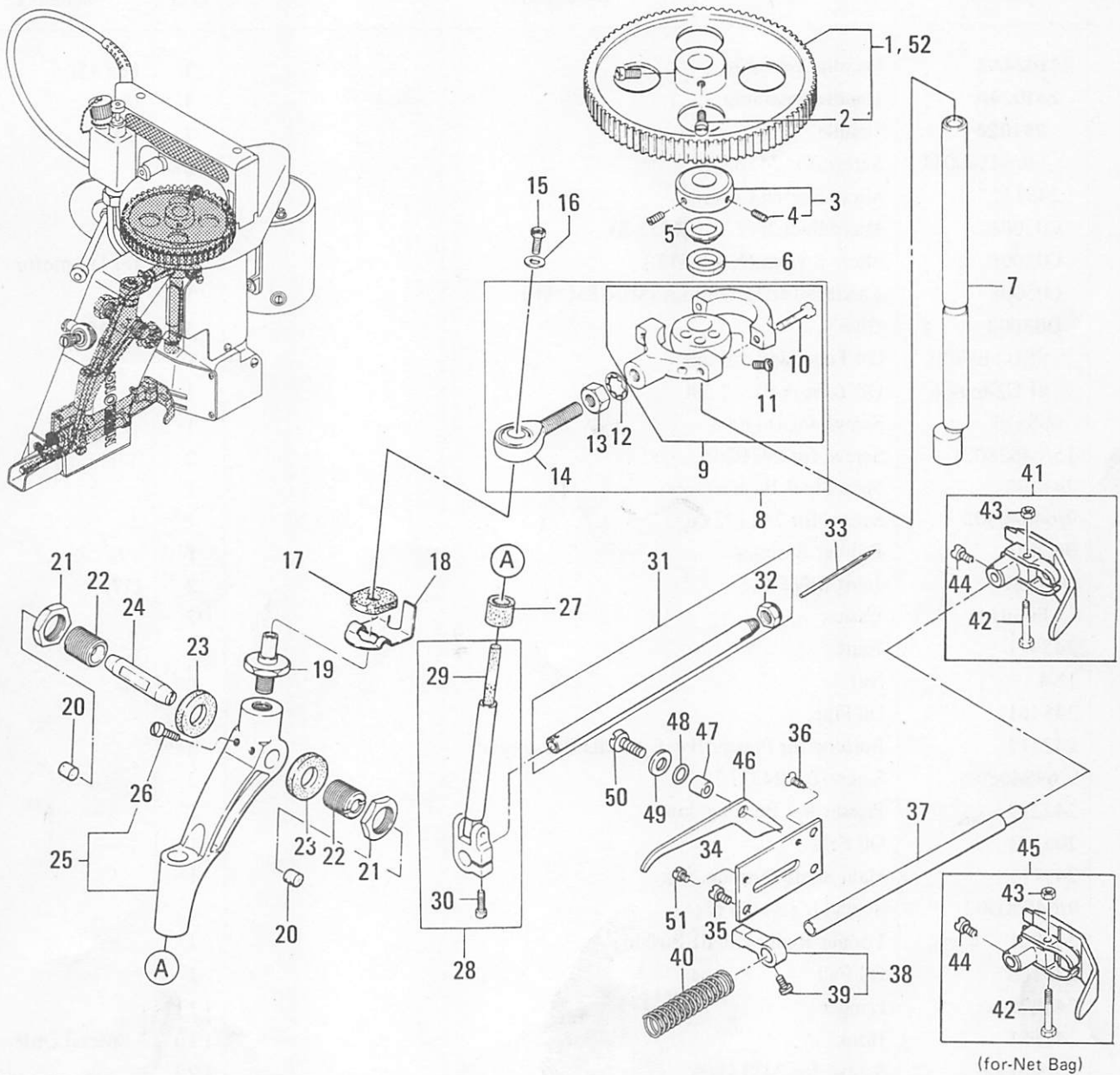
(2) BUSHINGS, OILINGS AND HANDLE PARTS



(2) BUSHINGS, OILINGS AND HANDLE PARTS

Ref.No.	Part No.	Description	Q'ty	Remarks
1	241024AS	Handle Assembly	1	(2~11)
2	241024A	Handle Assembly	1	(3, 4)
3	241024	Handle	1	(4)
4	9/64S40011	Screw, for 241024A	2	
5	245132	Micro Switch Cover	1	
✓ 6	C02001	Micro Switch (Z-15GK655-B)	1	
	C02006	Micro Switch (X-10GD-B)	1	for DC motor
7	C05008	Flexible Terminal Block (ML-SK-1, 4P)	1	
8	D03003	Oiler	1	(9, 10)
9	8FU2-6x90F	Oil Tube, with oil felt	1	
10	8FU2-6x60F	Oil Tube, with oil felt	1	
11	6S5x15	Screw, for D03003	1	
12	15/64S28021	Screw, for 241024A	2	
13	241122	Main Shaft Bushing, rear	1	
14	9/64S40502	Screw, for 241122	1	
15	065401	Rubber Bushing	1	
16	D07021	Joint (BN-5-6)	2	(17)
17	E03014	Washer	2	
18	245471	Joint	1	
19	1N4	Nut	1	
20	245461	Oil Pipe	1	
21	242212	Bushing for Presser Bar & Needle Bar, upper	3	
22	9/64S40502	Screw, for 242212	3	
23	242222	Presser Bar Bushing, lower	1	
24	205131	Oil Felt	1	
25	241111	Main Shaft Bushing, rear	1	
26	9/64S40502	Screw, for 241111	1	
27	243021	Looper Rocker Shaft Bushing	1	
28	245162	Oil Felt	1	
29	245271	Hanger	(1)	
30	241151	Hook	(1)	Special Order
31	1/8S40006	Screw, for 241151	(2)	
32	245171	Shoulder Belt	(1)	
33	EW -6.5	Spring Balancer	(1)	
34	241024BS	Handle Assembly (Safety type with pulley cover)	(1)	(2~11)
35	241024B	Handle Assembly (Safety type with pulley cover)	(1)	(3, 4)

(3) NEEDLE BAR, PRESSER BAR AND DRIVING PARTS

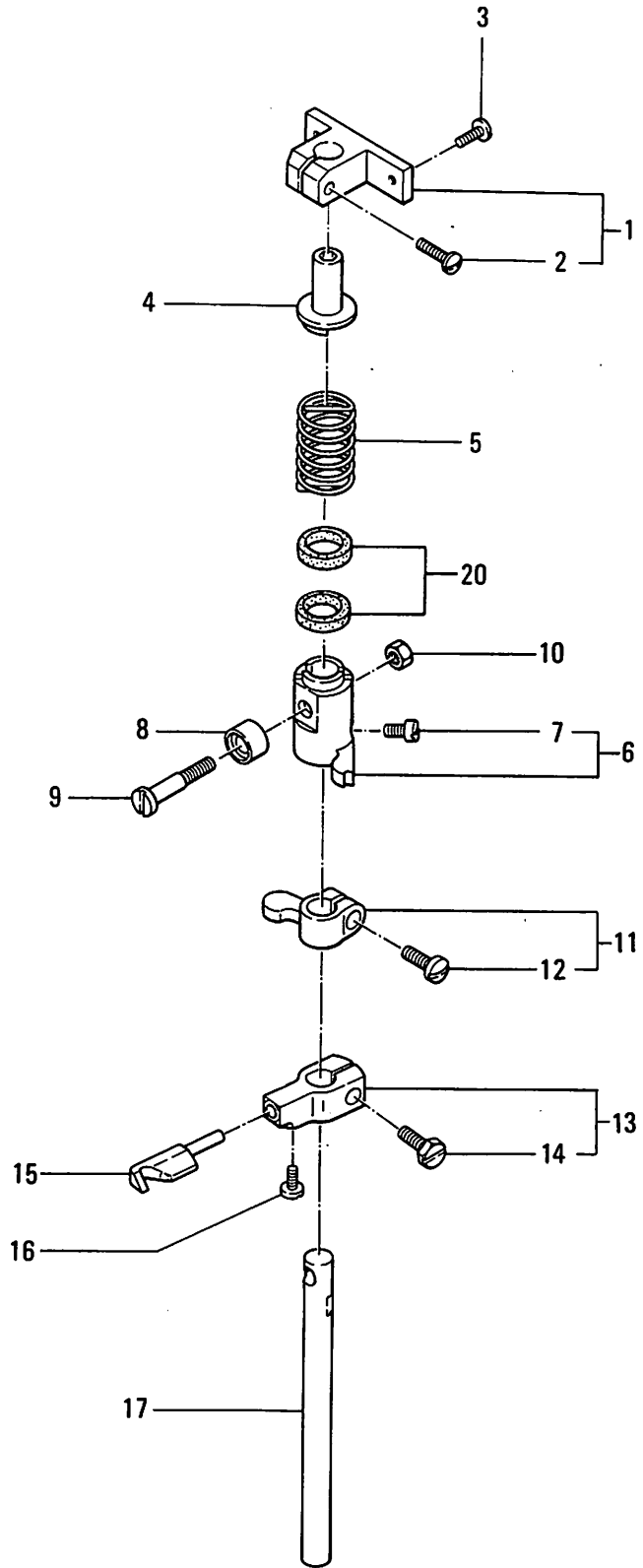
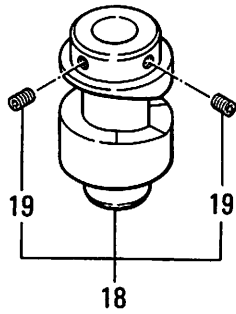
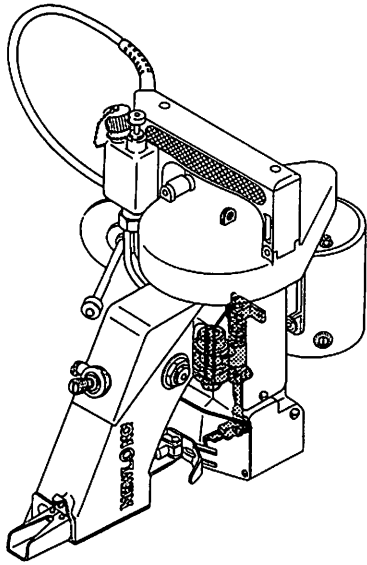


Ref. No.	Part No.	Description	Q'ty	Remarks
1	241092	Synchro Pulley	1	(2)
2	3/16S28001	Screw, for 241092	2	
3	241131	Retaining Collar	1	(4)
4	11/64S40502	Screw, for 241131	2	
5	241161	Spacer	1	
6	205131	Oil Felt	1	
7	241101	Main Shaft	1	
8	242011A	Connecting Rod Assembly	1	(9~14)
9	242011	Connecting Rod Sub-Assembly	1	(10, 11)
10	3/16S28029	Screw, for connecting rod cap	2	
11	11/64S40001	Screw, for eccentric cam	2	
12	1N8	Nut, for 242011A	1	

(3) NEEDLE BAR, PRESSER BAR AND DRIVING PARTS

Ref.No.	Part No.	Description	Q'ty	Remarks
13	5W8	Washer, for 242011A (A-8-S)	1	
14	6A04001	Rod End (POS-8)	1	
15	11/64S40089	Screw, for 242031	1	
16	11/64W15103	Washer, for 242031	1	
17	245211	Oil Felt	1	
18	242041	Spring	1	
19	242031	Rod End Stud	1	
20	245491	Cap	2	
21	5/8N18101	Nut, for 242081	2	
22	242081	Adjusting Stud	2	
23	245231	Oil Felt	2	
24	242071	Needle Bar Lever Stud	1	
25	242051A	Needle Bar Lever Assembly	1	(26)
26	11/64S40004	Screw, for 242051A	2	
27	245371	Oil Felt	1	
28	242101A	Needle Bar Connection Assembly	1	(29, 30)
29	205171	Oil Felt	1	
30	11/64S40003	Screw, for 242101A	1	
31	242121A	Needle Bar with Nut	1	(32)
32	242131	Needle Clamp Nut	1	
33	B01002	Needle (DNx1 #25)	1	
34	242171	Presser Foot Lifter Base	1	
35	11/64S40002	Screw, for 242171	1	
36	11/64S40007	Screw, for 242171	2	
37	242201	Presser Bar	1	
38	242181	Presser Bar Connection	1	(39)
39	11/64S40003	Screw, for 242181	1	
40	242191	Presser Spring	1	
41	242231A	Presser Foot Assembly	1	(42~44)
42	9/64S40055	Screw	1	
43	9/64N40101	Nut	1	
44	11/64S40005	Screw, for 242231A, 242233A	1	
45	242233A	Presser Foot Assembly (for Net Bag)	(1)	(42~44)
46	242161	Presser Foot Lifter	(1)	Special Order For Presser Bar Lifter
47	242271	Collar	(1)	
48	31LP6	"O" Ring	(1)	
49	11/64W15103	Washer	(1)	
50	11/64S40009	Screw, for 242161	(1)	
51	9/64S40001	Screw, for Lifter Stopper	(1)	
52	241091	Synchro Pulley	(1)	

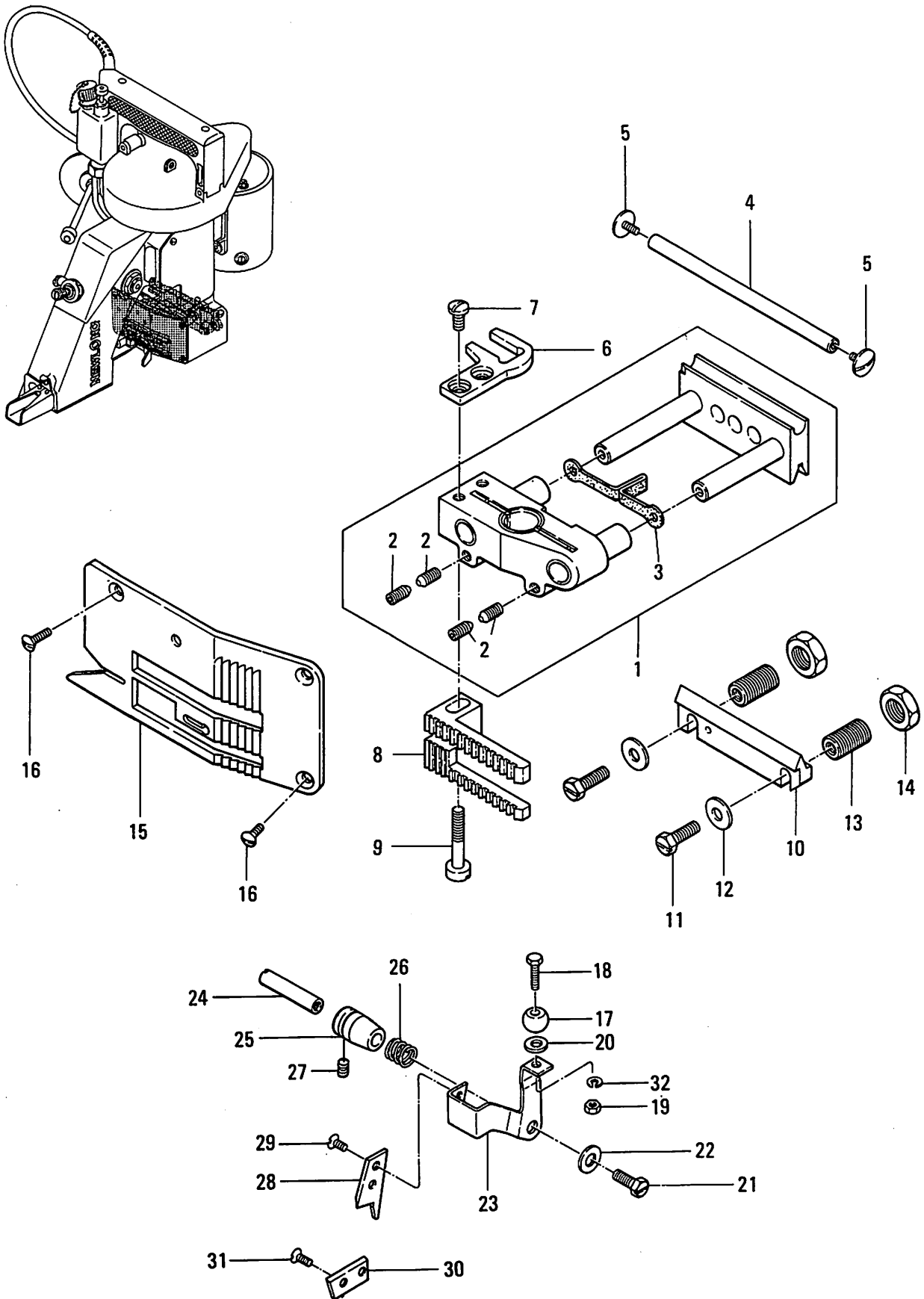
(4) LOOPER DRIVING PARTS



(4) LOOPER DRIVING PARTS

Ref.No.	Part No.	Description	Q'ty	Remarks
4-1	243111	Spring Supporter Block	1	(2)
2	9/64S40035	Screw, for 243111	1	
3	9/64S40005	Screw, for 243111	2	
4	243121	Spring Supporter	1	
5	243131	Spring	1	
6	243071	Looper Rocker Shaft Arm (A)	1	(7)
7	11/64S40002	Screw, for 243071	1	
8	243041	Roller	1	
9	243061	Roller Stud Screw	1	
10	11/64N40201	Nut, for 243061	1	
11	243081	Looper Rocker Shaft Arm (B)	1	(12)
12	11/64S40009	Screw, for 243081	1	
13	243092	Looper Rocker	1	(14)
14	11/64S40089	Screw, for 243092	1	
15	243102	Looper	1	
16	9/64S40001	Screw, for 243102	1	
17	243032	Looper Rocker Shaft	1	
18	243012	Looper Drive Cam	1	(19)
19	15/64S28524	Screw, for 243012	2	
20	205131	Oil Felt	2	

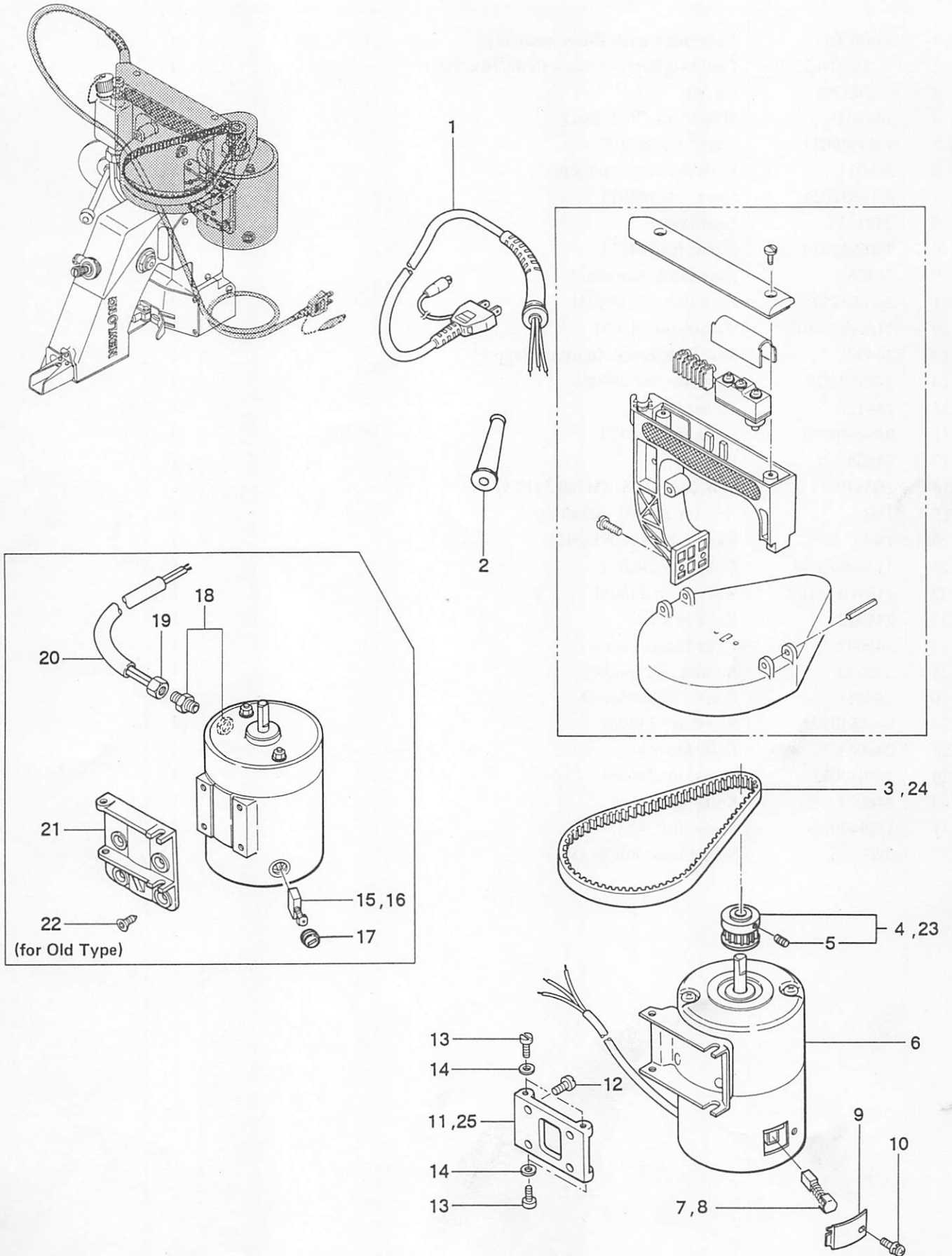
(5) FEED DRIVING AND THREAD CUTTER PARTS



(5) FEED DRIVING AND THREAD CUTTER PARTS

Ref.No.	Part No.	Description	Q'ty	Remarks
5-1	244011A	Feed Dog Carrier Block Assembly	1	(2, 3)
2	1S3/16-32x9	Feed Dog Support Screw (SM3/16x32x9)	4	
3	245391	Oil felt	1	
4	244102	Slide Block Guide Stud	1	
5	9/64S40011	Screw, for 244102	2	
6	246011	Knife Bracket Extension	1	
7	3/16S32031	Screw, for 246011	2	
8	244111	Feed Dog	1	
9	3/16S32034	Screw, for 244111	1	
10	244081	Slide Block Adjusting	1	
11	3/16S32025	Lock Bolt, for 244091	2	
12	11/64W15103	Washer, for 244091	2	
13	244091	Stud Slide Block Adjusting Support	2	
14	3/8N24201	Lock Nut, for 244091	2	
15	244122	Throat Plate	1	
16	9/64S40043	Screw, for 244122	3	
17	246081	Ball	1	
18	1B3x12	Bolt, for 246081 (M3x0.5x12 Ø)	1	
19	1N3	Nut, for 246081 (M3x0.5)	1	
20	1W3	Washer, for 246081 (M3)	1	
21	11/64S40049	Screw, for 246021	1	
22	11/64W15103	Washer, for 246021	1	
23	246021	Knife Bracket	1	
24	246032	Knife Bracket Pin	1	
25	246042	Bushing, for 246032	1	
26	246051	Knife Tension Spring	1	
27	9/64S40502	Screw, for 246042	1	
28	246061	Knife Moving	1	
29	1/8S40003	Screw, for 246061	2	
30	246071	Knife Stationary	1	
31	1/8S40003	Screw, for 246071	2	
32	3W3	Spring Lock Washer (M3)	1	

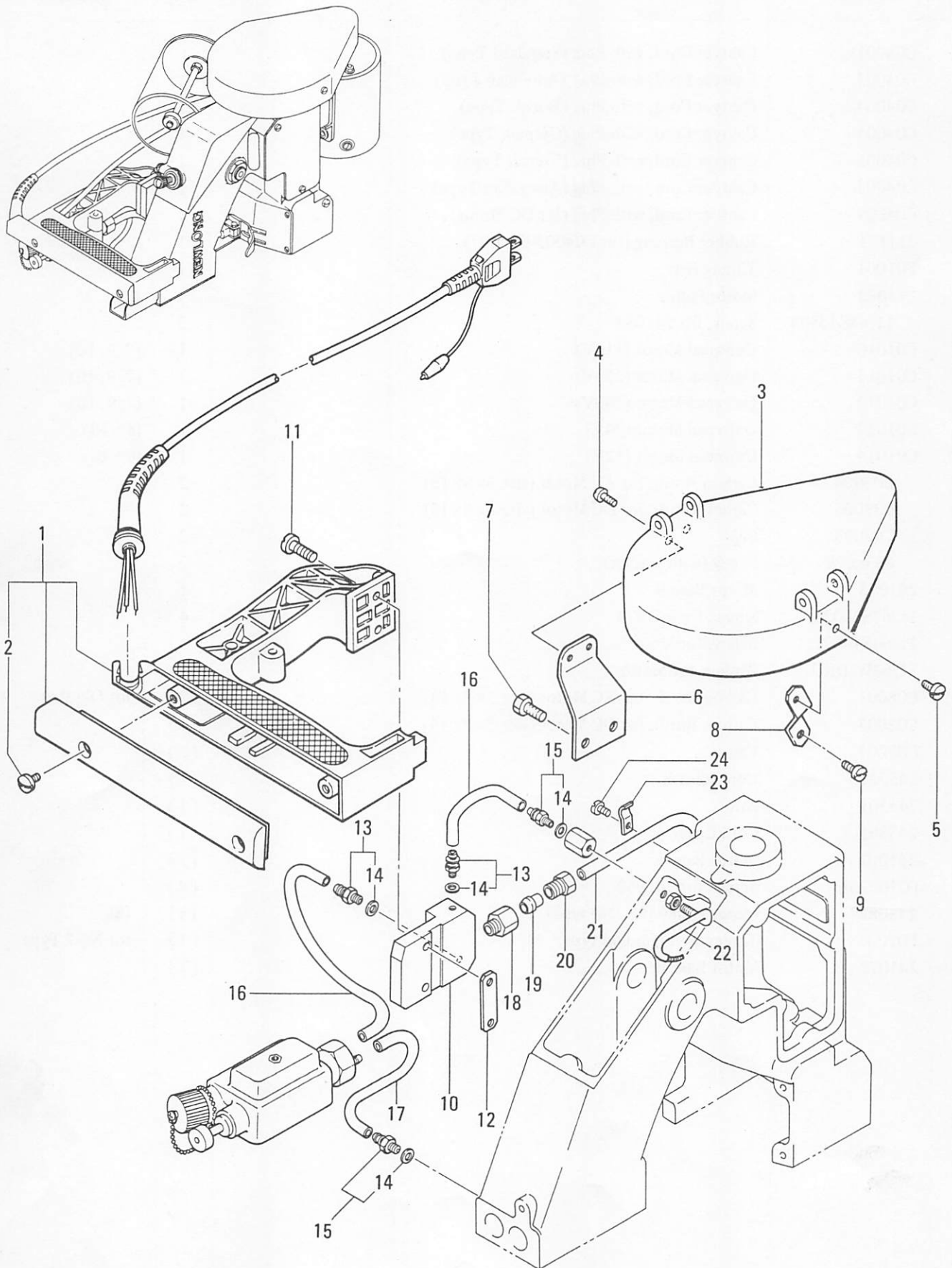
(6) MOTOR, PARTS (For Totally Enclosed Type Motor)



(6) MOTOR, PARTS (For Totally Enclosed Type Motor)

Ref.No.	Part No.	Description	Q'ty	Remarks
1	C04001	Cabtyer Cord, with Plug (Standard Type)	1	
	C04003	Cabtyer Cord, with Plug (American Type)	1	
	C04004	Cabtyer Cord, with Plug (British Type)	1	
	C04005	Cabtyer Cord, with Plug (German Type)	1	
	C04006	Cabtyer Cord, with Plug (French Type)	1	
	C04007	Cabtyer Cord, with Plug (Australian Type)	1	
	C04009	Cabtyer Cord, with Plug (for DC Motor)	1	
2	211151	Rubber Bushing (for C04003-C04007)	1	
3	F01001	Timing Belt	1	
4	241083	Motor Pulley	1	(5)
5	11/64S40504	Screw, for 241083	2	
6	C01010	Universal Motor (110V)	1	(7, 9, 10)
	C01011	Universal Motor (220V)	1	(7, 9, 10)
	C01012	Universal Motor (240V)	1	(7, 9, 10)
	C01013	Universal Motor (24V)	1	(8~10)
	C01014	Universal Motor (12V)	1	(8~10)
7	C08004	Carbon Brush, for AC Motor (size 6×8×15)	2	
8	C08005	Carbon Brush, for DC Motor (size 6×8×15)	2	
9	C07003	Cap	2	
10	4S3x6-W	Screw (with washer)	2	
11	241073	Motor Base B	1	
12	15/64S28021	Screw, for 241073	4	
13	11/64S40075	Screw, for Motor	4	
14	11/64W10101	Washer, for Motor	4	
15	C08001	Carbon Brush, for AC Motor (size 5×8×14)	(2)	for Old Part
16	C08003	Carbon Brush, for DC Motor (size 5×8×14)	(2)	
17	C07001	Cap	(2)	
18	245321	Connector B	(1)	
19	245501	Nut	(1)	
20	245361	Cord Cover	(1)	
21	241062	Motor Base A	(1)	
22	FC103238	Screw, for 241062	(4)	
23	241082	Motor Pulley (for Old type)	(1)	
24	F01002	Timing Belt (for Old type)	(1)	
25	241072	Motor Base B	(1)	

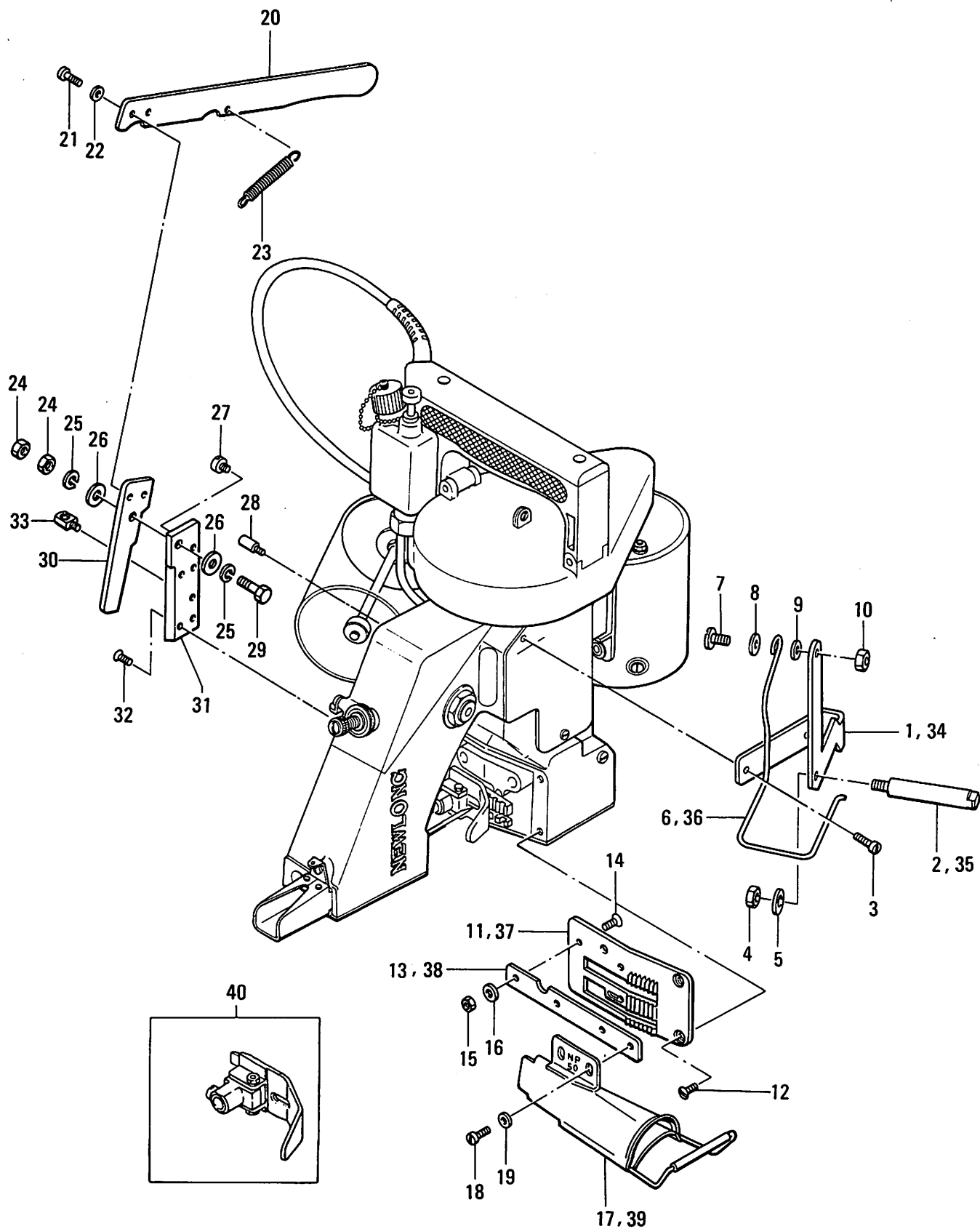
(7) SPECIAL PARTS FOR NP-7H TYPE



(7) SPECIAL PARTS FOR NP-7H TYPE

Ref.No.	Part No.	Description	Q'ty	Remarks
7-1	241024	Handle	1	(2)
2	9/64S40011	Screw	2	
3	241212	Pulley Cover	1	
4	9/64S40004	Screw, for 241053	2	
5	9/64S40052	Screw, for 241053	1	
6	241242	Pulley Cover Holder A	1	
7	15/64S28004	Screw, for 241242	2	
8	241231	Pulley Cover Holder B	1	
9	9/64S40005	Screw, for 241231	1	
10	241223	Handle Base	1	
11	15/64S28032	Screw, for 241253	2	
12	241253	Handle Base Holder	1	
13	D07021	Joint (BN-5-6)	2	(14)
14	E03014	Washer	4	
15	D07021	Joint (BN-5-6)	2	(14)
16	8FU2-6x95F	Oil Tube ($\phi 6 \times 95$ ℓ), with oil felt	2	
17	8FU2-6x70F	Oil Tube ($\phi 6 \times 70$ ℓ), with oil felt	1	
18	D07022	Joint	1	
19	D07023	Compression Sleeve	1	
20	D07024	Compression Bushing	1	
21	8FN2-4x135F	Oil Tube ($\phi 6 \times 135$ ℓ), with oil felt	1	
22	245462	Oil Pipe	1	
23	D07009	Tube Clip (PC-4-1)	1	
24	9/64S40005	Screw, for D07009	1	

(8) CREPE TAPE BINDING AND CUTTER PARTS (Special Order Parts)



(8) CREPE TAPE BINDING AND CUTTER PARTS (Special Order Parts)

Ref.No.	Part No.	Description	Q'ty	Remarks
8-1	247071	Crepe Tape Bracket	1	
2	247091	Crepe Tape Hanger Stud	1	
3	9/64S40035	Screw, for 247071	2	
4	1N6	Nut, for 247091 (M6)	1	
5	2W6	Washer, for 247091 (M6)	1	
6	247081	Crepe Tape Supporter	1	
7	11/64S40015	Screw, for 247071	1	
8	1/4 W03205	Spring Washer, for 247071	1	
9	1/4W15105	Washer, for 247071	1	
10	11/64N40203	Nut, for 247071	1	
11	244132	Throat Plate	1	
12	9/64S40043	Screw, for 244132	3	
13	247051	Holder, for crepe tape binder	1	
14	9/64S40043	Screw, for 247051	2	
15	9/64N40101	Nut, for 247051	2	
16	2W4	Washer, for 247051 (M4)	2	
17	247061	Crepe Tape binder	1	
18	9/64S40054	Screw, for 247061	2	
19	2W4	Washer, for 247061 (M4)	2	
20	247031	Cutter Lever	1	
21	11/64S40046	Screw, for 247011	2	
22	11/64W10101	Washer, for 247011	2	
23	247041	Screw, for 247031	1	
24	15/64N28206	Nut, for 247021	2	
25	3W6	Spring Lock Washer, for 247021, (M6)	2	
26	2W6	Washer, for 247021, (M6)	2	
27	11/64S40029	Stopper Screw, for 247011	1	
28	3/16S32026	Stopper Screw, for 247031	1	
29	247021	Hinge Pin	1	
30	247011	Knife, Moving	1	
31	247001	Knife, Stationary	1	
32	1/8S40003	Screw, for 247001	4	
33	183261	Spring Hook	1	
34	247073	Crepe Tape Bracket	(1)	for Crepe Tape width 70 mm
35	247092	Crepe Tape Hanger Stud	(1)	
36	247082	Crepe Tape Supporter	(1)	
37	244133	Throat Plate	(1)	
38	247052	Holder, for crepe tape binder	(1)	
39	247063	Crepe tape Binder	(1)	
40	242261A	Presser Foot Assembly	(1)	

NUMERICAL INDEX OF PARTS

PART NO.	PAGE	PART NO.	PAGE	PART NO.	PAGE
065261	11-16	242212	13-21	245271	13-29
065401	13-15	242222	13-23	245302	11-28
183261	25-33	242231A	15-41	245321	21-18
205131	13-24 14-6	242233A	15-45	245361	21-20
	17-20	242261A	25-40	245371	15-27
205171	15-29				
		242271	15-47	245391	19-3
211151	21-2	243012	17-18	245461	13-20
		243021	13-27	245462	23-22
241024	13-3 23-1	243032	17-17	245471	13-18
241024A	13-2	243041	17-8	245481	11-27
241024AS	13-1				
		243061	17-9	245491	15-20
241024B	13-35	243071	17-6	245501	21-19
241024BS	13-34	243081	17-11	246011	19-6
241062	21-21	243092	17-13	246021	19-23
241072	21-25	243102	17-15	246032	19-24
241073	21-11				
		243111	17-1	246042	19-25
241082	21-23	243121	17-4	246051	19-26
241083	21-4	243131	17-5	246061	19-28
241091	15-52	244011A	19-1	246071	19-30
241092	14-1	244081	19-10	246081	19-17
241101	14-7				
		244091	19-13	247001	25-31
241111	13-25	244102	19-4	247011	25-30
241122	13-13	244111	19-8	247021	25-29
241131	14-3	244122	19-15	247031	25-20
241151	13-30	244132	25-11	247041	25-23
241161	14-5				
		244133	25-37	247051	25-13
241212	23-3	245013	11-9	247052	25-38
241223	23-10	245022	11-25	247061	25-17
241231	23-8	245033	11-20	247063	25-39
241242	23-6	245042	11-1	247071	25-1
241253	23-12				
		245052	11-7	247073	25-34
242011	14-9	245071	11-13	247081	25-6
242011A	14-8	245081A	11-14	247082	25-36
242031	15-19	245081	11-15	247091	25-2
242041	15-18	245091	11-18	247092	25-35
242051A	15-25				
		245101	11-17		
242071	15-24	245132	13-5		
242081	15-22	245162	13-28		
242101A	15-28	245171	13-32		
242121A	15-31	245181	11-30		
242131	15-32				
		245201	11-8		
242161	15-46	245211	15-17		
242171	15-34	245222	11-23		
242181	15-38	245231	15-23		
242191	15-40	245261	11-11		
242201	15-37				

NUMERICAL INDEX OF PARTS

PART NO.	PAGE	PART NO.	PAGE	PART NO.	PAGE
OTHER ITEMS		SCREW		15/64S28524	17-19
6A04001	15-14	1/8S40003	19-29 19-31	1B3x12	19-18
B01002	15-33		25-32	1S3/16-32x9	19-2
C01010	21-6	1/8S40006	13-31	4S3x6-W	21-10
		3/16S28001	14-2	FC103238	21-22
C01011	21-6			6S5x15	13-11
C01012	21-6	3/16S28029	14-10		
C01013	21-6	3/16S32025	19-11		
C01014	21-6	3/16S32026	25-28		
C02001	13-6	3/16S32031	19-7		
		3/16S32034	19-9		
C02006	13-6			NUT	
C04001	21-1	9/64S40001	15-51 17-16	IN3	19-19
C04003	21-1	9/64S40004	23-4	1N4	13-19
C04004	21-1	9/64S40005	11-26 11-29	1N6	11-3 25-4
C04005	21-1		17-3 23-9		
			23-24	1N8	14-12
C04006	21-1	9/64S40011	11-19 13-4	3/8N24201	19-14
C04007	21-1		19-5 23-2	5/8N18101	15-21
C04009	21-1	9/64S40035	17-2 25-3	9/64N40101	15-43 25-15
C05008	13-7			11/64N40201	17-10
C07001	21-17	9/64S40043	11-10 19-16		
			25-12 25-14	11/64N40203	25-10
		9/64S40052	23-5	15/64N28206	25-24
C07003	21-9	9/64S40054	25-18		
C08001	21-15	9/64S40055	15-42		
C08003	21-16	9/64S40065	11-22 11-24		
C08004	21-7				
C08005	21-8	9/64S40502	13-14 13-22	WASHER	
			13-26 19-27	1W3	19-20
D03003	13-8	11/64S40001	14-11	2W4	25-16 25-19
D07009	23-23	11/64S40002	15-35 17-7	2W6	11-5 25-5
D07021	13-16	11/64S40003	15-30 15-39		25-26
	23-13 23-15	11/64S40004	15-26	3W3	19-32
D07022	23-18			3W6	11-4 25-25
D07023	23-19	11/64S40005	11-12 11-21	5W8	15-13
			15-44	1/4W03205	25-8
D07024	23-20	11/64S40007	15-36		
F01001	21-3	11/64S40009	15-50 17-12		
F01002	21-24	11/64S40015	25-7		
K01001	11-6	11/64S40029	25-27	1/4W15105	25-9
8FN2-4x135F	23-21			11/64W10101	21-14 25-22
		11/64S40046	25-21	11/64W15103	15-16 15-49
8FU2-6x60F	13-10	11/64S40049	19-21		19-12 19-22
8FU2-6x70F	23-17	11/64S40075	21-13		
8FU2-6x90F	13-9	11/64S40089	15-15 17-14	E03014	13-17 23-14
8FU2-6x95F	23-16	11/64S40502	14-4		
EW -6.5	13-33				
		11/64S40504	21-5		
31LP6	15-48	15/64S28004	23-7		
		15/64S28021	13-12 21-12		
		15/64S28028	11-2		
		15/64S28032	23-11		

NP-7A

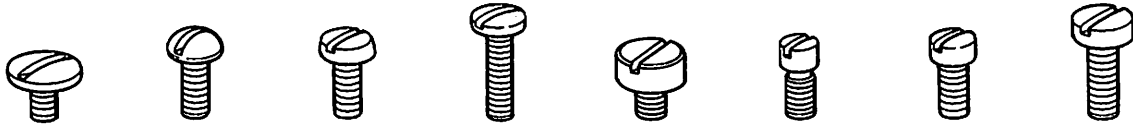
SCREW, NUT & WASHER

ネジ, ナット, ワッシャー

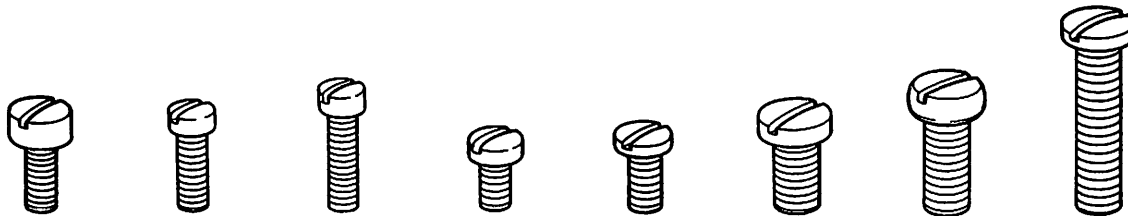
FULL SIZE (原寸)



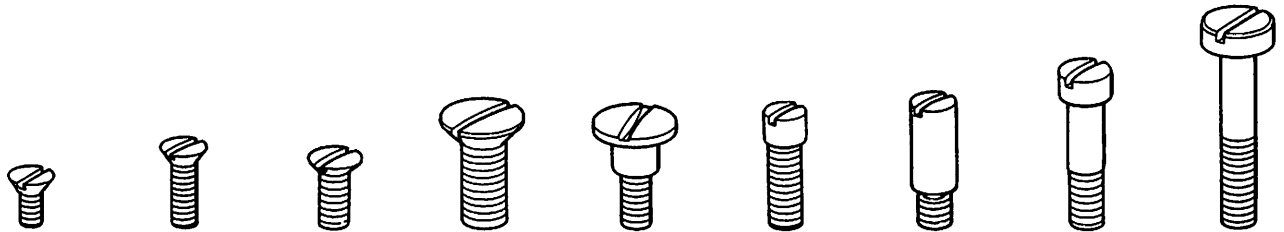
9/64S40502 11/64S40502 11/64S40504 15/64S28524 1/8S40006 9/64S40001 9/64S40004 9/64S40052 9/64S40054



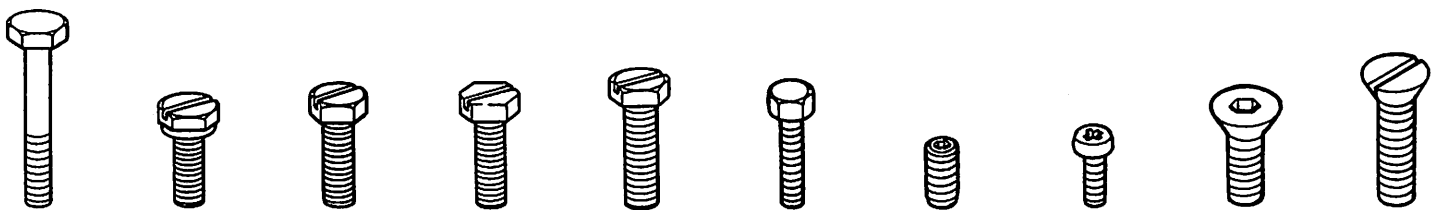
9/64S40011 9/64S40065 9/64S40005 9/64S40035 11/64S40029 11/64S40001 11/64S40002 11/64S40009



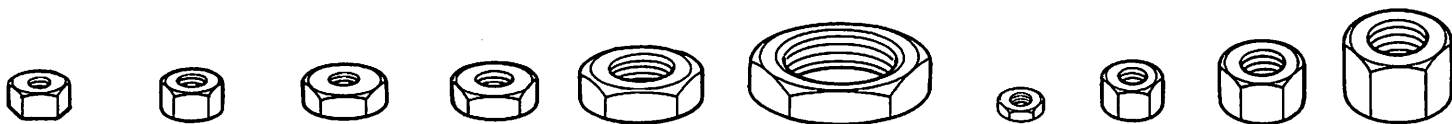
11/64S40046 11/64S40003 11/64S40004 11/64S40005 3/16S32031 15/64S28004 15/64S28021 15/64S28032



1/8S40003 9/64S40043 11/64S40007 15/64S28028 11/64S40015 3/16S28001 3/16S32026 3/16S28029 3/16S32034



9/64S40055 11/64S40049 11/64S40075 11/64S40089 3/16S32025 1B3x12 1S3/16-32x9 4S3x6-W FC103238 6S5x15



9/64N40101 11/64N40201 11/64N40203 15/64N28206 3/8N24201 5/8N18101 1N3 1N4 1N6 1N8



11/64W10101 11/64W15103 1/4W03205 1/4W15105 1W3 2W4 2W6 3W3 3W6 5W8 E03014

本社

東京都台東区東上野 6-4-14 TEL03-3843-7311(代)
〒110 TLX 265-5306
FAX 03-3843-9998

海外事業部

東京都台東区松ヶ谷 1-14-14 TEL03-3843-0269
〒111 TLX265-5306
FAX03-3843-0260

営業所

小樽 小樽市銭函 2-17-2 TEL0134-62-2691(代)
〒047-02 FAX0134-62-2682

仙台 仙台市若林区遼見塚 3-14-10 TEL022-286-5189
〒982 FAX022-286-8230

東京 東京都足立区大谷田 4-3-17 TEL03-3629-2691(代)
〒120 FAX03-3629-2695

千葉 千葉市末広 5-12-2 TEL0472-63-1542
〒280 FAX0472-66-6546

横浜 横浜市鶴見区元宮 1-17-3 TEL045-584-2691(代)
〒230 FAX045-584-9450

清水 清水市袖師 503 TEL0543-64-2691(代)
〒424 FAX0543-65-2533

名古屋 名古屋市中川区百船町 13-5 TEL052-351-2691(代)
〒454 FAX052-363-3691

富山 富山市下富居 1-1-36 TEL0764-41-2690
〒931 FAX0764-31-2691

大阪 大阪市福島区大開 2-1-8 TEL 06-462-4351(代)
〒553 FAX 06-465-5926

岡山 岡山市海吉 1844-5 TEL0862-77-6527
〒703 FAX0862-77-6528

坂出 坂出市江尻町 1460-4 TEL0877-46-3659(代)
〒762 FAX0877-46-3662

広島 広島市中区舟入町 7-28 TEL082-293-2691(代)
〒733 FAX082-295-6516

福岡 福岡県粕屋郡新宮町下ノ府 487 TEL092-962-4006(代)
〒811-01 FAX092-963-0249

出張所

旭川 旭川市永山 5条 4丁目 TEL0166-47-3267
〒078-02 FAX0166-48-1654

青森 青森市大字新田字扇田 123 TEL0177-66-2691
〒030 FAX0177-66-7082

新潟 新潟市桃山町 1-109-5 TEL025-275-1451
〒950 FAX025-273-8488

郡山 郡山市並木 3-3-7 TEL0249-34-3177
〒963 FAX0249-32-7076

栃木 栃木市川原田町 280-3 TEL0282-23-3981
〒328-01 FAX0282-23-3809

鹿島 茨城県鹿島郡神栖町知手字太高 6117-1 TEL0299-96-4612
〒314-02 FAX0299-96-7359

群馬 群馬県佐波郡玉村町大字上茂木 490-1 TEL0270-65-0883
〒370-11 FAX0270-65-0889

長野 長野県小県郡東部町大字滋野字小原乙 2508-5 TEL0268-64-2691
〒389-03 FAX0268-64-2619

滋賀 滋賀県栗太郡栗東町大橋 1-10-30 TEL0775-53-2691
〒520-30 FAX0775-53-7846

高砂 高砂市阿弥陀北池 9-2 TEL0794-47-2570
〒676-01 FAX0794-47-2807

小郡 山口市大字江崎字河原 3640-1 TEL0839-89-2691
〒754 FAX0839-89-4999

鹿児島 鹿児島市小松原 1-11-10 TEL0992-68-3235
〒891-01 FAX0992-67-6023

工場**ニューロング工業㈱**

本社 東京都葛飾区白鳥 4-8-14 TEL03-3603-2251(代)
〒125 FAX03-3603-9648

柏 千葉県柏市新十倉 2-9-1 TEL0471-33-2691
〒277 FAX0471-33-2695

藤岡 栃木県下都賀郡藤岡町藤岡 4254 TEL0282-62-3201(代)
〒349-13 FAX0282-62-5400

大館 秋田県大館市二井田羽賀谷地 TEL0186-49-5201(代)
〒018-57 FAX0186-49-0759

土浦 土浦市中村町 1322 TEL0298-41-0805(代)
〒300 FAX0298-42-9105

長野 長野県須坂市大字小河原字松川 TEL0262-45-7223
〒382 4011-6 FAX0262-48-0847

NEWLONG MACHINE WORKS, LTD.

Head Office : 14-14, Matsugaya 1-chome, Taito-ku, Tokyo 111, Japan
Cable Address : NEWLONG TOKYO. Fax : (03)3843-0269
Telex : 265-5306 NLTK J, FAX : (03)3843-0260

Osaka Branch : 1-8, Obiraki 2-chome, Fukushima-ku, Osaka 553, Japan
Cable Address : NEWLONG OSAKA, Tel : (06)466-3530
Fax : (06)465-5926

Newlong Taiwan Machine Co., Ltd. : 3rd Fl., 29, Lane 100, Song Chiang Road, Taipei, Taiwan, R. O. China
Cable Address : NEWLONG TAIPEI, Tel : (02)5716524, 5642692
FAX : 886-2-5221420

Newlong Machine Philippines, Inc. : 3590 Davila Street, Makati, Metro Manila, Philippines
Cable Address : NEWLONG MANILA
Tel : 8160207, 851266
Fax : 8163977

Newlong Singapore Pte. Ltd. : NO.68, Kian Teck Road, Jurong Town, Singapore 2262
Cable Address : NL MACHINE SINGAPORE, Tel : 265-0901, 261-2126
Telex : 23649 NLSIN, RS Fax : 65-265-1994

Newlong Do Brasil Maquinas Industriais Ltda. : Rua, Francisco Tapajós, 409/415, Jardim da Saúde, Sao Paulo, Brasil
Cable Address : NEWLONG SAOPAULO, Tel : 276-9744
Telex : (11)57453 NEWL, BR Fax : 276-9084

American-Newlong, Inc. : 5310 South Harding Street, Indianapolis, Indiana 46217 U.S.A.
Tel : (317)787-9421
Telex : TWX 810-341-3313 AMLONG IND. Fax : (317)786-5225

Newlong Holland B.V. : Snipweg 3, 1118 AA, Schiphol Zuid, Holland.
Tel : (020)603-7217 Telex : 18896 NLN NL
Fax : (020)6484-593

Newlong Malaysia Sdn Bhd : 77 Jalan SS20/11, Damansara Kim, 47400 Petaling Jaya, Selangor, Malaysia
Tel : 7188323, 7188401 Telex : 37868 NLMAS MA
Fax : 7176000

Newlong Thailand Ltd. : 1415 Sukhumvit Road, Between Soi 63-65
Prakanong, Bangkok 10110, Thailand
Tel : (02)391-1171, 8870,
Telex : 21137 NLTHAI TH, Fax : (02)391-5508

Newlong (Hong Kong) Co., Ltd. : Room 9C Lockhart Centre 301-307A
Lockhart Road, Wanchai, Hong Kong
Tel : 573-1855 Telex : 62847 HKMTL HX
Fax : 572-1786



14-14 MATSUGAYA 1-CHOME, TAITO-KU TOKYO, JAPAN TEL: (3843) 0269

No.14

No. IE3007H 92-03-1000F

PRINTED IN JAPAN

© 1985, 1991 NEWLONG MACHINE WORKS, LTD.

From the library of: Superior Sewing Machine & Supply LLC