

YAO HAN

手提式縫口袋機

MODEL

N600A(ONE THREAD)
單線

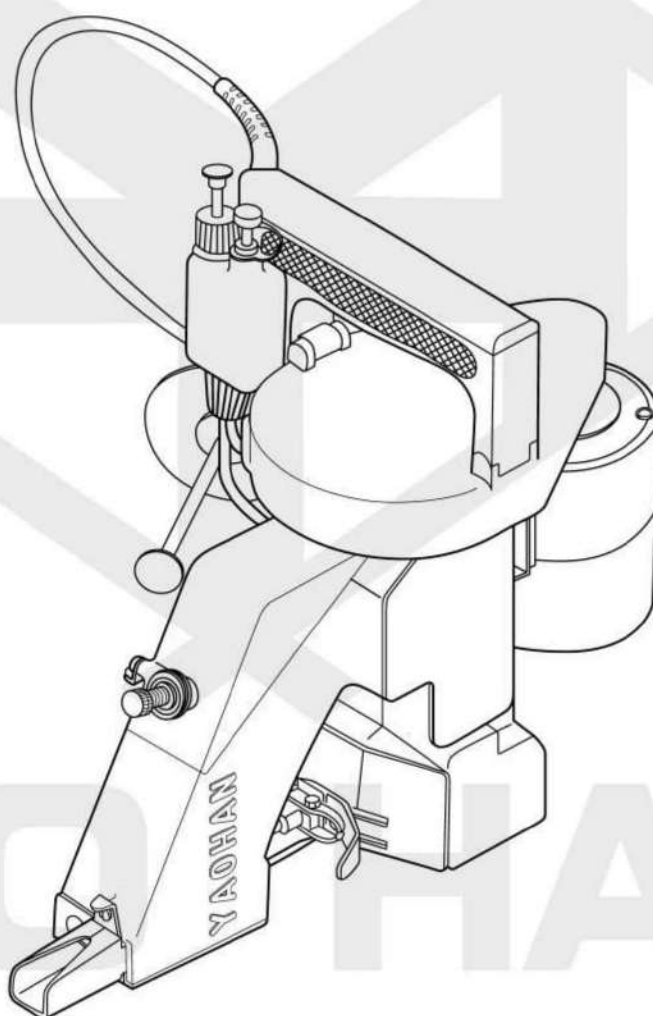
N602A(TWO THREAD)
雙線

N600H(ONE THREAD, HIGH SPEED)
單線, 高速

N602H(TWO THREAD, HIGH SPEED)
雙線, 高速

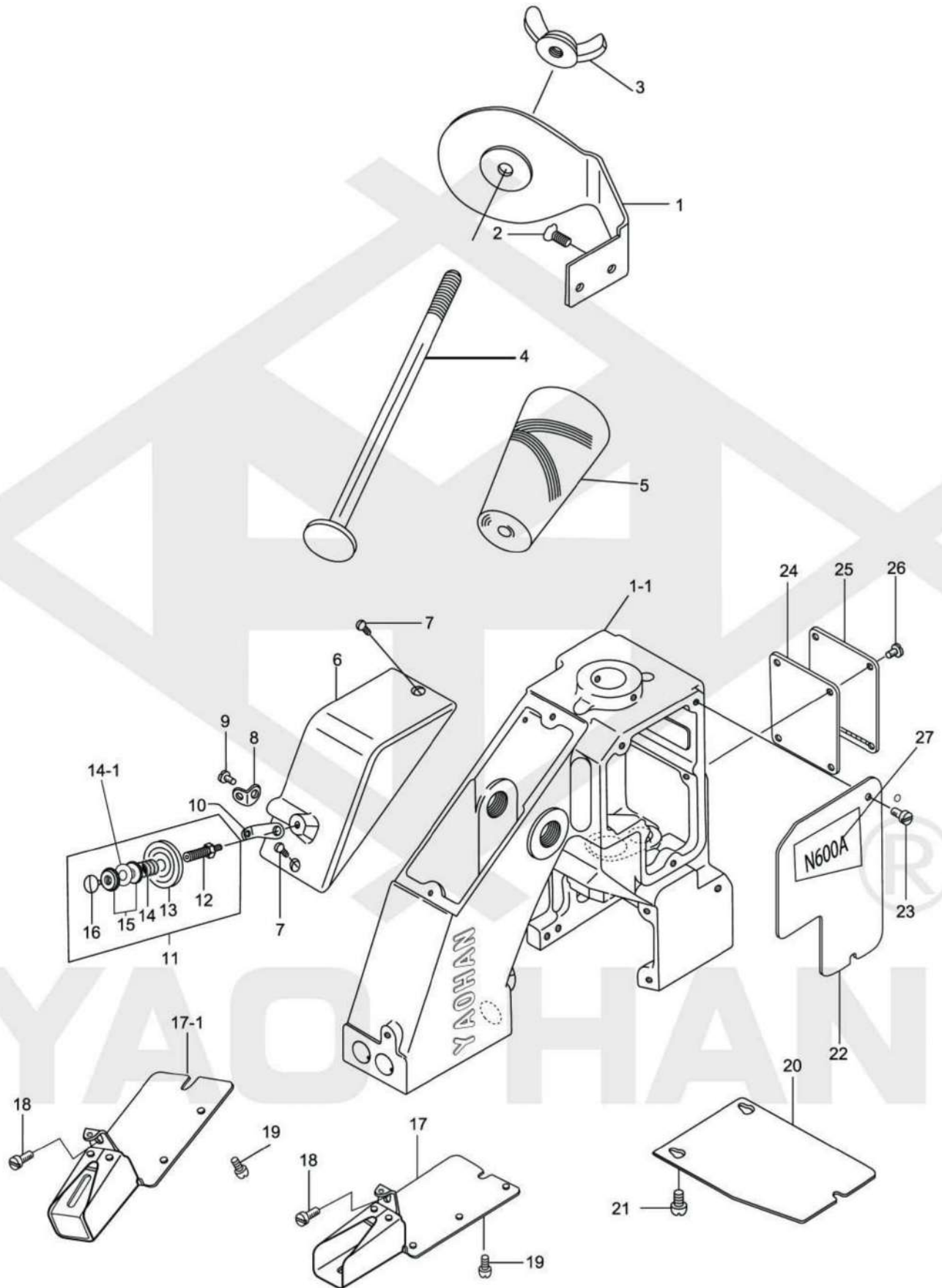
PORTABLE BAG CLOSER

PARTS BOOK 零件本



耀瀚股份有限公司
YAO HAN INDUSTRIES CO., LTD.

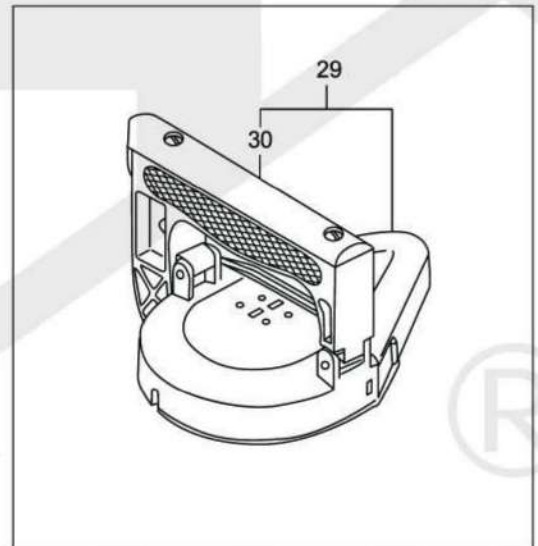
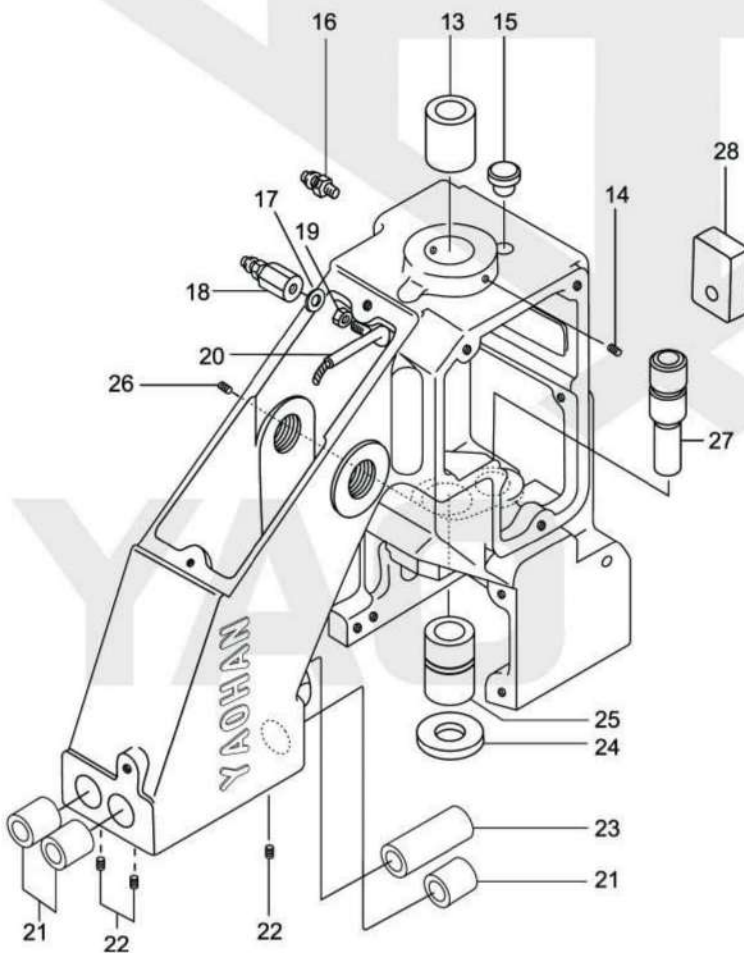
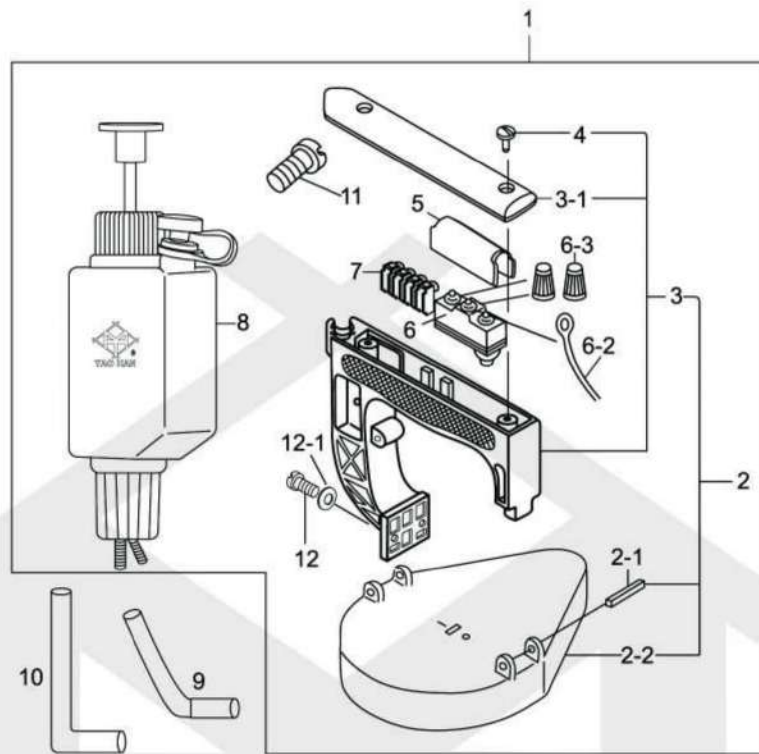
(1) THRED TENSION AND COVER PARTS



(1) THRED TENSION AND COVER PARTS

ITEM	PART NO.	DESCRIPTION	Q'ty	REMARKS
1	6001001	THREAD STAND	線架	1
1-1	6001001-1	MAIN FRAME	本體	
2	6001002	SCREW, FOR 6001001	螺絲	2
3	3001641	NUT, FOR 6001004, FOR YAO HAN ONLY	蝴蝶螺帽	2
4	3001634	THREAD CONE CLAMPING ROD, FOR YAO HAN ONLY	線柱	1
5	6001005	THREAD	線	1
6	6001006	TOP COVER	機台三角蓋	1
7	6001007	SCREW, FOR 6001006	螺絲	2
8	6001008	THREAD EYELET	穿線孔架	1
9	6001009	SCREW, FOR 6001008	螺絲	1
10	6001010	THREAD TENSION EYELET	沙拉組過線	1
11	6001011	THREAD TENSION ASSEMBLY	沙拉組	1
12	6001012	TENSION POST	沙拉組軸	1
13	6001013	TENSION DISC	壓線盤	2
14	6001014	TENSION SPRING	彈簧	1
14-1	6001014-1	WASHER	華司	
15	6001015	TENSION NUT	調整螺帽	1
16	6001016	SCREW, FOR 6001011	螺絲	2
17	6001017	NEEDLE BAR GUARD	針棒護板	1
17-1	6001017-1	NEEDLE BAR GUARD FOR "CE" TYPE	針棒護板(CE)	1
18	6001009	SCREW, FOR 6001017	螺絲	1
19	6001023	SCREW, FOR 6001017	螺絲	1
20	6001020	LOOPER COVER	彎針蓋板	2
21	6001019	SCREW, FOR 6001020	螺絲	1
22	6001022	SLIDE PLATE	側面板	3
23	6001023	SCREW, FOR 6001022	螺絲	1
24	6001024	GASKET	防油墊片	3
25	6001025	INSIDE COVER	蓋板	1
26	6001023	SCREW, FOR 6001025	螺絲	1
27	6001027	NAMEPLATE	N600A鋁牌(黑底)	1

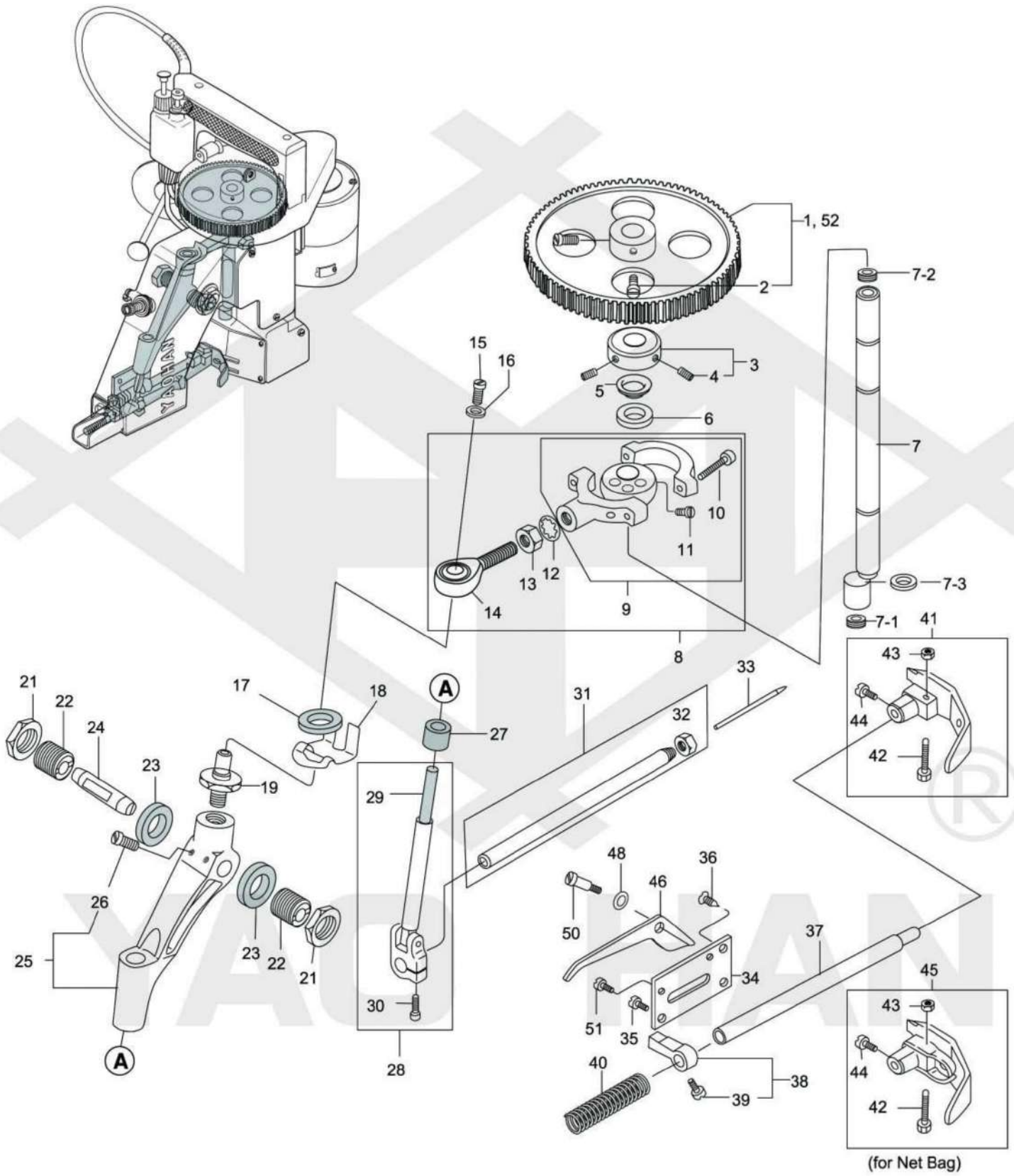
(2) BUSHINGS, OILINGS AND HANDLE PARTS



(2) BUSHINGS, OILINGS AND HANDLE PARTS

ITEM	PART NO.	DESCRIPTION	Q'ty	REMARKS
1	6001201	HANDLE ASSEMBLY WITH OILER SWITCH	1	
2	6001202	HANDLE ASSEMBLY	1	
2-1	6001202-1	PIN	2	
2-2	6001202-2	COVER	1	
3	6001203	HANDLE	1	
3-1	6001203-1	COVER HANDLE	1	
4	6001016	SCREW, FOR 6001202	2	
5	6001205	MICRO SWITCH COVER CE	1	
6	6001206	MICRO SWITCH (Z-15GK655-B)	1	
6-2	6001206-2	END PLUG WIRE	1	
6-3	6001206-3	NUT WIRE	2	
7	6001207	FLEXIBLE TERMINAL BLOCK (ML-S-1, 4P) CE	1	
8	6001208N	OILER	1	
9	6001209	OIL TUBE, WITH OIL FELT (ϕ 6x95 L)	1	
10	6001210	OIL TUBE, WITH OIL FELT (ϕ 6x100 L)	1	
11	6001430	SCREW, FOR 6001208	1	
12	6001212	SCREW, FOR 6001202S	2	
12-1	6001212-1	WASHER	2	
13	6001213	MAIN SHAFT BUSHING, REAR	1	
14	6001214	SCREW, FOR 6001213	1	
15	6001215	RUBBER BUSHING	1	
16	6001216	JOINT	2	
17	6001217	WASHER	1	
18	6001218	JOINT	1	
19	6001219	NUT	1	
20	6001220	OIL PIPE	3	
21	6001221	BUSHING FOR PRESSER BAR NEEDLE BAR, UPPER	3	
22	6001222	SCREW, FOR 6001221	5	
23	6001223	PRESSER BAR BUSHING, LOWER	1	
24	6001224	OIL FELT	1	
25	6001225	MAIN SHAFT BUSHING, REAR	1	
26	6001222	SCREW, FOR 6001225	1	
27	6001227	LOOPER ROCKER SHAFT BUSHING	1	
28	6001228	OIL FELT	(1)	
29	6001229	HANDLE ASSEMBLY AND SWITCH	(1)	
30	6001230	HANDLE AND SWITCH		

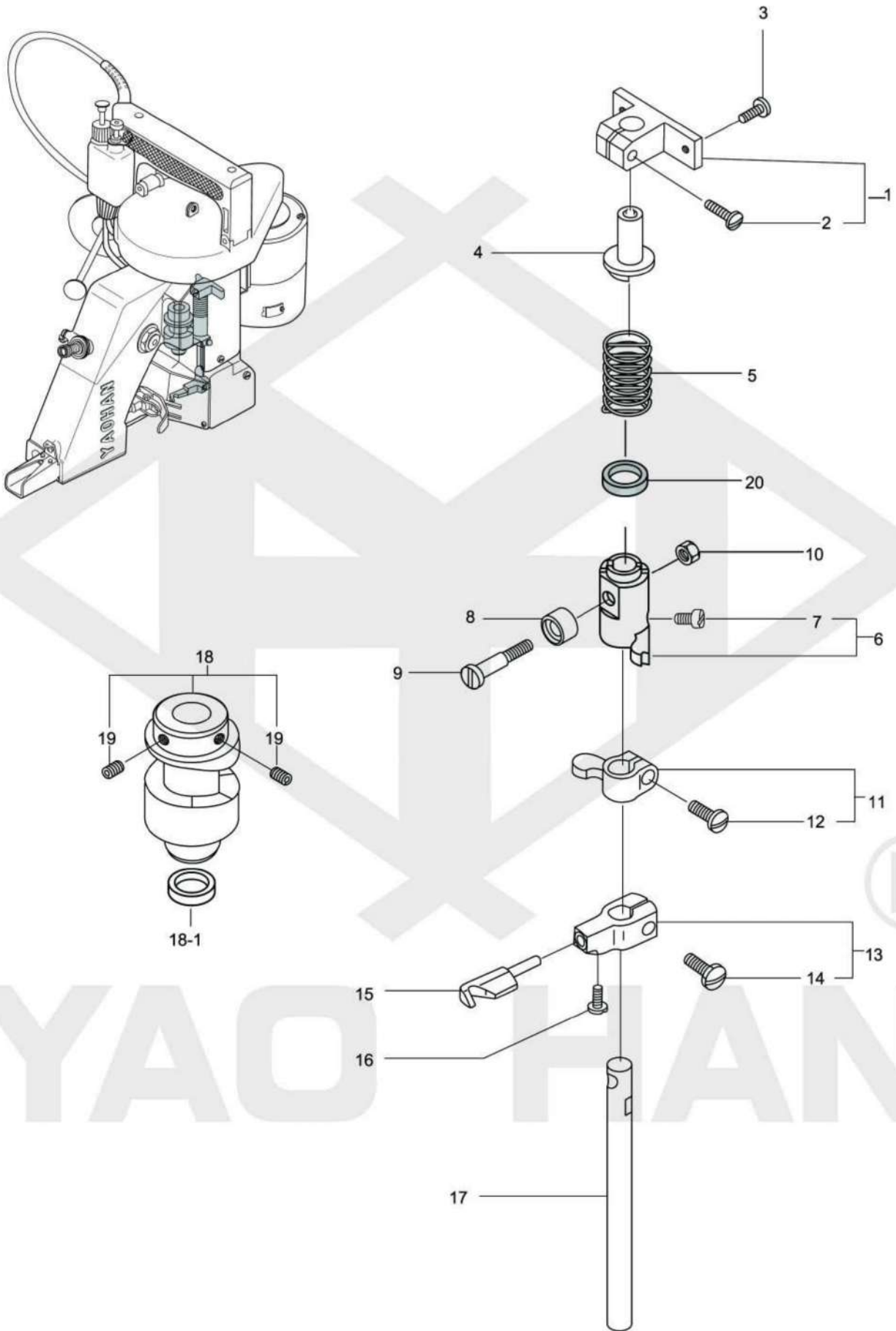
(3) NEEDLE BAR, PRESSER BAR AND DRIVING PARTS



(3) NEEDLE BAR, PRESSER BAR AND DRIVING PARTS

ITEM	PART NO.	DESCRIPTION	Q'ty	REMARKS
1	6001401	SYNCHRO PULLEY (70 TEETH) FOR N600A,N602A	1	
2	6001402	SCREW, FOR 6001401	2	
3	6001403	RETAINING COLLAR	1	
4	6001404	SCREW, FOR 6001403	2	
5	6001405	SPACER	1	
6	6001224	OIL FELT	1	
7	6001407	MAIN SHAFT	1	
7-1	6001407-1	SCREW	1	
7-2	6001407-2	SCREW	1	
7-3	6001407-3	OIL FELT	1	
8	6001408	CONNECTING ROD ASSEMBLY	1	
9	6001409	CONNECTING ROD SUB-ASSEMBLY	1	
10	6001410	SCREW, FOR CONNECTING ROD CAP	2	
11	6001411	SCREW, FOR ECCENTRIC CAM	1	
12	6001412	WASHER, FOR 6001408	1	
13	6001413	NUT, FOR 6001408 (A-8-S)	1	
14	6001414	ROD END (POS-8)	1	
15	6001415	SCREW, FOR 6001419	1	
16	6001416	WASHER, FOR 6001419	1	
17	6001417	OIL FELT	1	
18	6001418	SPRING	1	
19	6001419	ROD END STUD	2	
21	6001421	NUT, FOR 6001422	2	
22	6001422	ADJUSTING STUD	2	
23	6001423	OIL FELT	2	
24	6001424	NEEDLE BAR LEVER STUD	1	
25	6001425	NEEDLE BAR LEVER ASSEMBLY	2	
26	6001426	SCREW, FOR 6001425	1	
27	6001427	OIL FELT	1	
28	6001428	NEEDLE BAR CONNECTION ASSEMBLY	1	
29	6001429	OIL TUBE	1	
30	6001430	SCREW, FOR 6001428	1	
31	6001431	NEEDLE BAR WITH NUT	1	
32	6001432	NEEDLE CLAMP NUT	1	
33	6001433	NEEDLE (DNX1 #25)	1	
34	6001434	PRESSER FOOT LIFTER BASE	1	
35	6001435	SCREW, FOR 6001434	2	
36	6001436	SCREW, FOR 6001434	1	
37	6001437	PRESSER BAR	1	
38	6001438	PRESSER BAR CONNECTION	1	
39	6001430	SCREW, FOR 6001438	1	
40	6001440	PRESSER SPRING	1	
41	6001441	PRESSER FOOT ASSEMBLY	1	
42	6001442	SCREW	1	
43	6001443	NUT SM 9/64"-40	1	
44	6001444	SCREW, FOR 6001441, 6001445	1	
45	6001445	PRESSER FOOT ASSEMBLY (FOR CE)	(1)	
46	6001446	PRESSER FOOT LIFTER	(1)	
48	6001448	"O" RING	(1)	
50	6001450	SCREW, FOR 6001446	(1)	
51	6001451	SCREW, FOR LIFTER STOPPER	(1)	
52	6001452	SYNCHRO PULLEY (60 TEETH) FOR N600H,N602H	(1)	

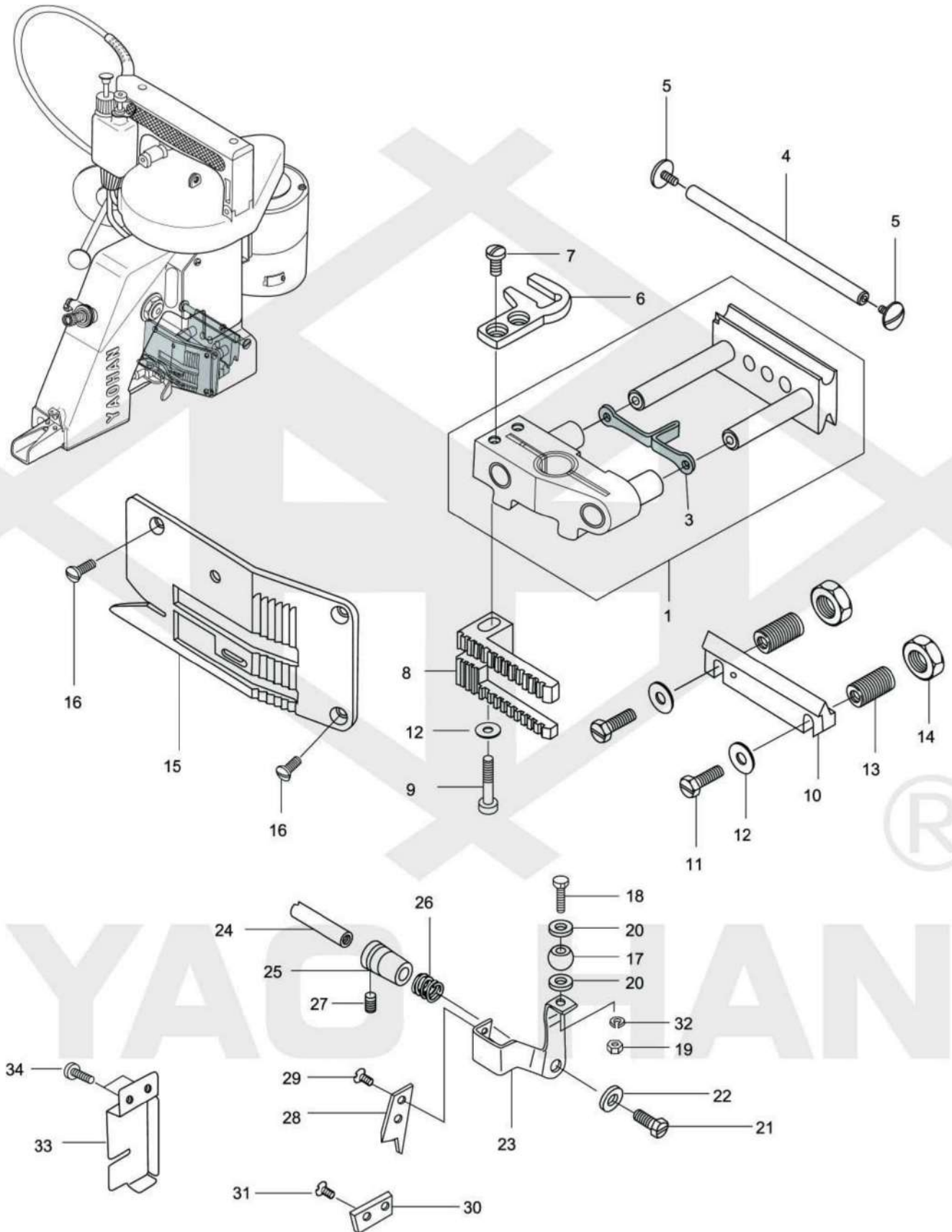
(4) LOOPER DRIVING PARTS



(4) LOOPER DRIVING PARTS

ITEM	PART NO.	DESCRIPTION	Q'ty	REMARKS
1	6001601	SPRING SUPPORTER BLOCK	1	(2)
2	6001602	SCREW, FOR 6001601	1	
3	6001023	SCREW, FOR 6001601	2	
4	6001604	SPRING SUPPORTER	1	
5	6001605	SPRING	1	
6	6001606	LOOPER ROCKER SHAFT ARM (A)	1	(7)
7	6001435	SCREW, FOR 6001606	1	
8	6001608	ROLLER	1	
9	6001609	ROLLER STUD SCREW	1	
10	6001610	NUT, FOR 6001609	1	
11	6001611	LOOPER ROCKER SHAFT ARM (B)	1	(12)
12	6001612	SCREW, FOR 6001611	1	
13	6001613	LOOPER ROCKER	1	
14	6001415	SCREW, FOR 6001613	1	(14)
15	6001615	LOOPER	1	
16	6001451	SCREW, FOR 6001415	1	
17	6001617	LOOPER ROCKER SHAFT	1	
18	6001618	LOOPER DRIVE CAM	1	(19)
18-1	6001618-1	WASHER	2	
19	6001619	SCREW, FOR 6001618	2	
20	6001224	OIL FELT	1	

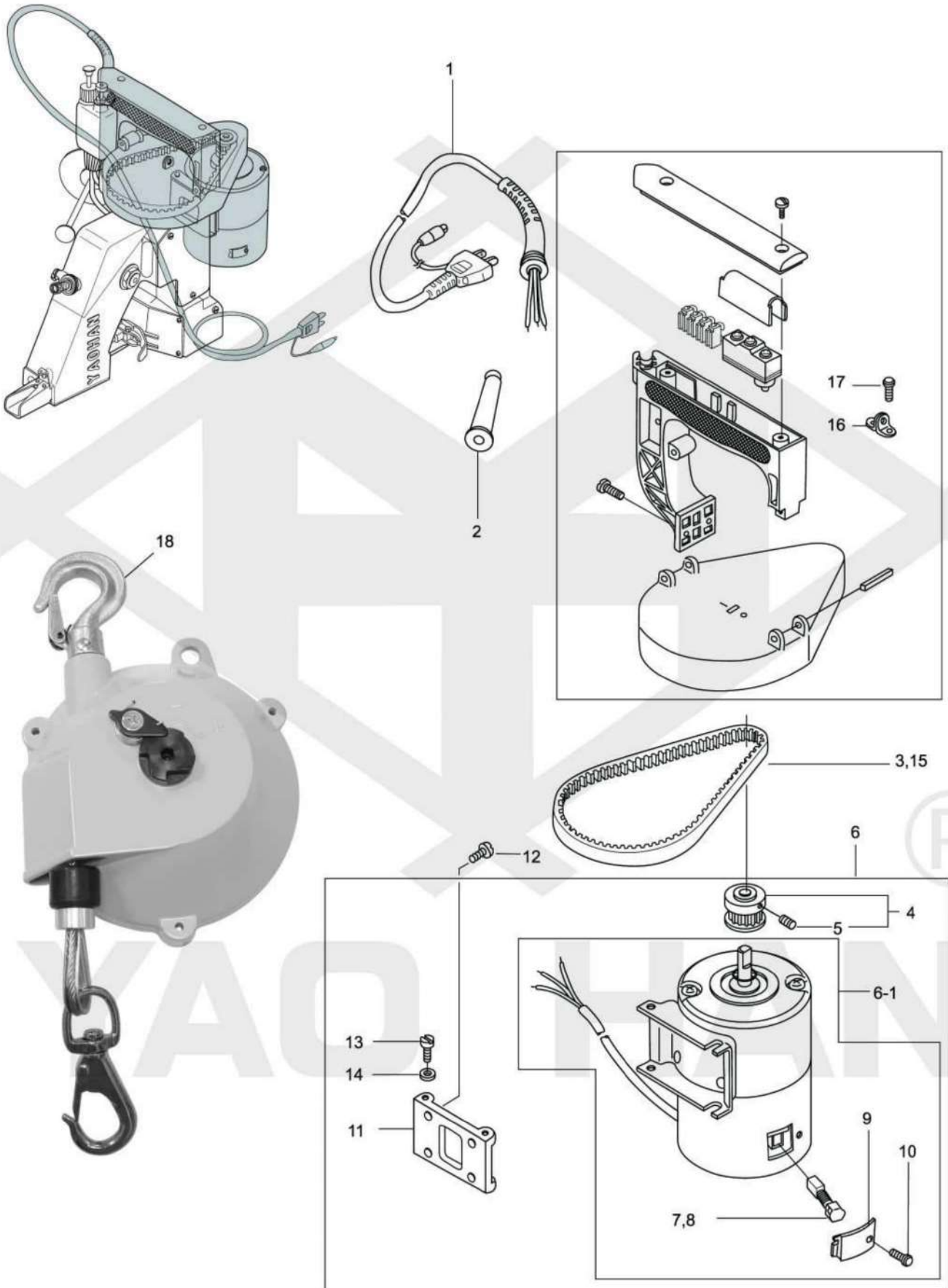
(5) FEED DRIVING AND THREAD CUTTER PARTS



(5) FEED DRIVING AND THREAD CUTTER PARTS

ITEM	PART NO.	DESCRIPTION	Q'ty	REMARKS
1	6001801	FEED DOG CARRIER BLOCK ASSEMBLY	1	(2,3)
3	6001803	OIL FELT	1	
4	6001804	SLIDE BLOCK GUIDE STUD	1	
5	6001016	SCREW, FOR 6001804	2	
6	6001806	KNIFE BRACKET EXTENSION	1	
7	6001807	SCREW, FOR 6001806	2	
8	6001808	FEED DOG	1	
9	6001809	SCREW, FOR 6001808	1	
10	6001810	SLIDE BLOCK ADJUSTING	1	
11	6001811	LOCK BOLT, FOR 6001813	2	
12	6001416	WASHER, FOR 6001813	3	
13	6001813	STUD SLIDE BLOCK ADJUSTING SUPPORT	2	
14	6001814	LOCK NUT, FOR 6001813	2	
15	6001815	THROAT PLATE	1	
16	6001007	SCREW, FOR 6001815	3	
17	6001817	BALL	1	
18	6001818	BOLT, FOR 6001817 (M3X0.5X12 L)	1	
19	6001819	NUT, FOR 6001817 (M3X0.5)	1	
20	6001820	WASHER, FOR 6001817 (M3)	2	
21	6001821	SCREW, FOR 6001823	1	
22	6001416	WASHER, FOR 6001823	1	
23	6001823	KNIFE BRACKET	1	
24	6001824	KNIFE BRACKET PIN	1	
25	6001825	BUSHING, FOR 6001824	1	
26	6001826	KNIFE TENSION SPRING	1	
27	6001222	SCREW, FOR 6001825	1	
28	6001828	KNIFE MOVING	1	
29	6001829	SCREW, 6001828	2	
30	6001830	KNIFE STATIONARY	1	
31	6001829	SCREW, FOR 6001830	2	
32	6001832	SPRING LOCK WASHER (M3)	1	
33	6001833	KNIFE COVER	1	
34	6002017	SCREW, FOR 6001833	2	

(6) MOTOR, PARTS (For Totally Enclosed Type motor)



(6) MOTOR, PARTS (For Totally Enclosed Type motor)

ITEM	PART NO.	DESCRIPTION	Q'ty	REMARKS
1	6002001	CABTYER CORD, WITH PLUG (PLANE TYPE) 110V	1	
	6002001-1	CABTYER CORD, WITH PLUG "CE"	1	
	6002001-2	CABTYER CORD, 220V	1	
	6002001-3	CABTYER CORD, WITH PLUG 12V	1	
2	6002002	RUBBER BUSHING	1	
3	6002003	TIMING BELT (160XL FOR N600H & N602H)	1	
4	6002004	MOTOR PULLEY	1	
5	6002005	SCREW, FOR 241083	2	
6	6002006	UNIVERSAL MOTOR ASM.(110V)	1	
	6002006-1	UNIVERSAL MOTOR ASM.(220V)	1	
	6002006-2	UNIVERSAL MOTOR ASM.(240V)	1	
	6002006-3	UNIVERSAL MOTOR ASM.(24V)	1	
	6002006-4	UNIVERSAL MOTOR ASM.(12V)	1	(5)
	6002006-5	UNIVERSAL MOTOR ASM.(110V SMALL)	1	
6-1	6002006M	UNIVERSAL MOTOR (110V)	1	
	6002006-1M	UNIVERSAL MOTOR (220V)	1	
	6002006-2M	UNIVERSAL MOTOR (240V)	1	
	6002006-3M	UNIVERSAL MOTOR (24V)	1	
	6002006-4M	UNIVERSAL MOTOR (12V)	1	(5)
	6002006-5M	UNIVERSAL MOTOR (110V SMALL)	1	
7	6002007	CARBON BRUSH, FOR AC MOTOR (SIZE:6X8X15)	2	(7,9,10)
8	6002008	CARBON BRUSH, FOR DC MOTOR 12V/24V (SIZE:6X8X15)	2	(7,9,10)
9	6002009	CAP	1	(8-10)
10	6002010	SCREW (WITH WASHER)	1	(8-10)
11	6002011-1	MOTOR BASE B FOR N600A & N602A	1	
	6002011-2	MOTOR BASE B FOR N600H & N602H (HIGH SPEED)	1	
12	6001212	SCREW	4	
13	6001415	SCREW	4	
14	6002014	WASHER, FOR MOTOR	4	
15	6002015	TIMING BELT (170XL FOR N600A & N602A)	1	
16	6002016	HANGER HOOK	1	
17	6002017	SCREW, FOR 6002016	2	
* 18	SB-5K	SPRING BALANCE FOR 3-5KGS.	1	
	SB-7K	SPRING BALANCE FOR 5-7KGS.	1	
	SB-9K	SPRING BALANCE FOR 7-9KGS.	1	

*SPECIAL ORDER



®

YAO HAN

®

耀 瀚 股 份 有 限 公 司
YAO HAN INDUSTRIES CO., LTD.