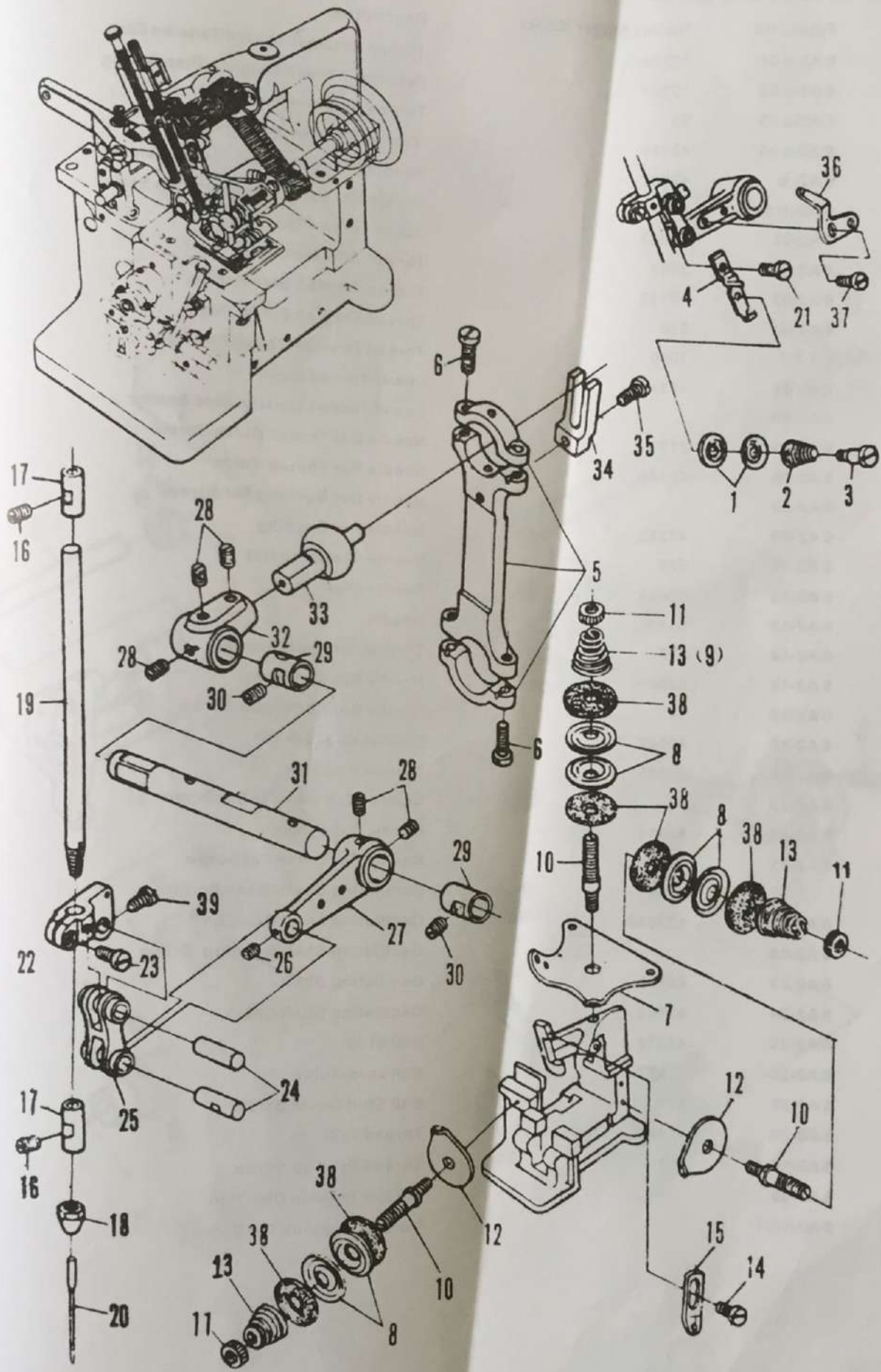


GN1
1. Frame components

Ref.	Figure No.	Notes	No. for Singer Model	Description	QTY
1	6A1-01			Machine Arm	1
2	6A1-02			Machine Bed	1
3	6A1-04	M8X16 GB 70-76		Arm Screw	2
4	6A1-03	Φ5X20GB 117-66		Arm Pin	2
5	6A1-a 01		42145	Cloth Plate	1
6	6A1-a 05		42005	Cloth Plate Lock Spring	1
7	6A1-a 06		236	Cloth Plate Lock Spring Screw	2
8	6A1-05		1437	Cloth Plate Hinge Screw	1
9	6A1-06		1655	Cloth Plate Nut	1
10	6A1-07		42029	Top Cover	1
11	6A3-29		42018	Feeder Regulator Indicator Plate	1
12	6A6-21		1253	Feeder Regulator Indicator Plate Screw	2
13	6A6-02		742	Top Cover Screw	3
14	6A1-b		42027	Left Cover Assembly	1
15	6A1-c		42028	Right Cover Assembly	1
16	6A1-08		830	Left/Right Cover Screw	4
17	6A1-d			Oscillating Shaft Oil Tube Assembly	1
18	6A1-16			Trade Mark Plate	1
19	J0.0.80			Trade Mark Plate Pin	2
20	6A1-18			Machine Model Plate	1
21	6A1-17	Φ 2X6GB 827-76		Machine Model Plate Pin	2
22	6A1-09			Machine Head Cushion	4
23	6A1-10		935	Machine Head Cushion Screw	4
24	6A1-11			Oil Reservoir	1
25	6A1-20	5X25 GB 100-66		Oil Reservoir Set Screw	3
26	6A1-12	Φ 8GB 96X76		Machine Set Screw Washer	1
27	6A1-13	M8X65 GB30-76		Machine Set Screw	1
28	6A1-a 02		42003	Lower Cover	1
29	6A1-a 04			Lower Cover Screw	3

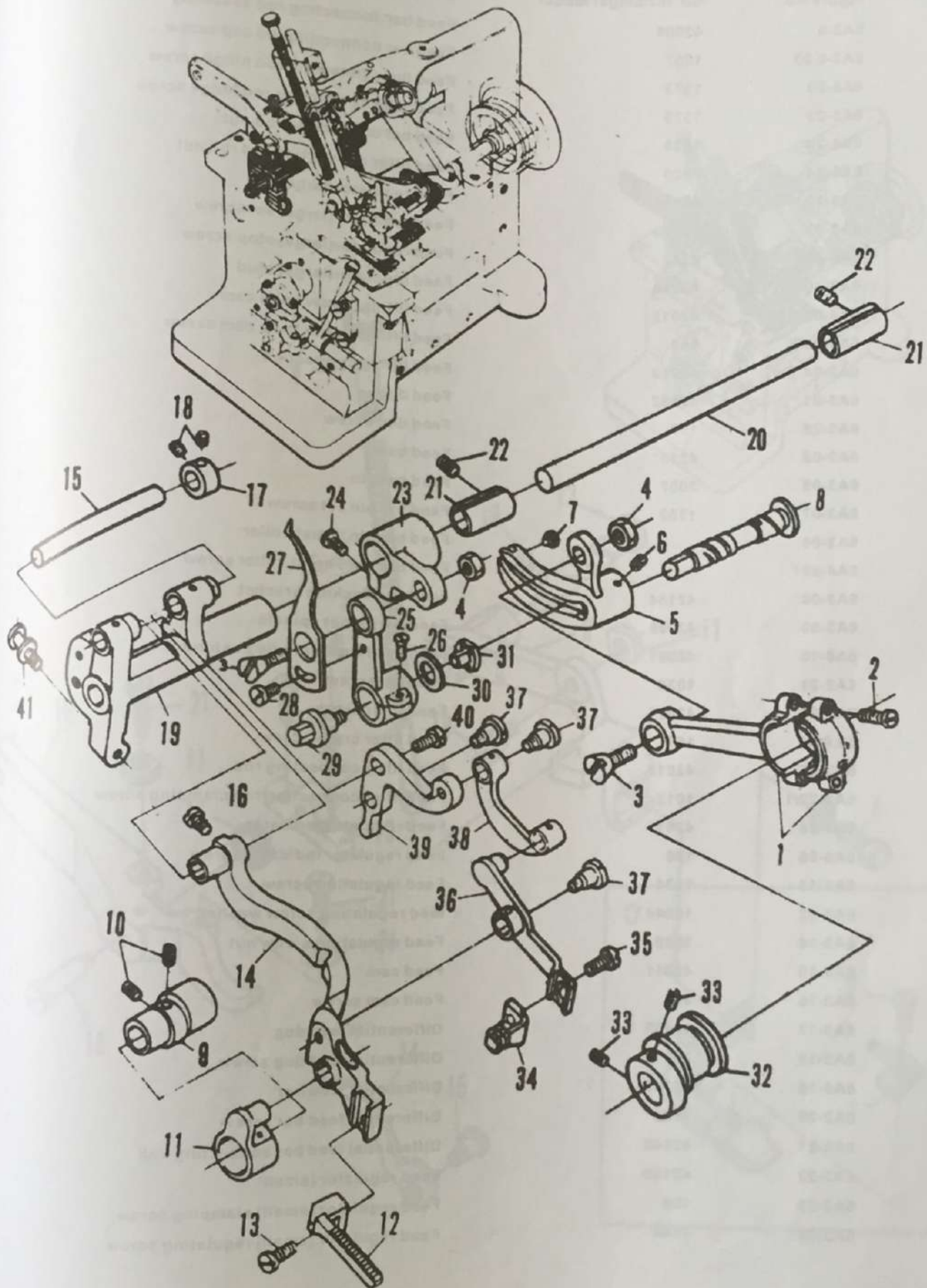
GN1
2. Needle bar & thread guide



GN1
2. Needle bar&thread guide

Ref.	Figure No.	No. for Singer Model	Description	QTY
1	6 A2-a 01	10106	Thread Retainer Thread Tension Disc	2
2	6 A2-a 02	10107	Retainer Thread Tension Disc Spring	1
3	6 A2-a 03	93	Thread Retainer Screw	1
4	6 A2-a 04	42115	Thread Retainer Bracket	1
5	6 A2- b	42057	Needle Bar connecting Rod Assembly	1
6	6 A2- b 03	1057	Needle Bar connecting Rod Cap Screw	4
7	6 A2-01	42082	Upper Thread Guide	1
8	6 A2-02	2102	Thread Tension Disc	6
9	6 A2-03	10148	Thread Tension Disc Spring	1
10	6 A2-04	916	Thread Tension Screw Post	3
11	J 2.2.7	1560	Thread Tension Regulation Nut	3
12	6 A2-06	17547	Lower Thread Guide	2
13	6 A2-03		Lower Thread Tension Disc Spring	2
14	6 A2-07	217	Needle Bar Thread Guide Screw	1
15	6 A2-08	42096	Needle Bar Thread Guide	1
16	6 A2-09		Needle Bar Bushing Set Screw	2
17	6 A2-10	42253	Needle Bar Bushing	2
18	6 A2-11	620	Needle Clamping Nut	1
19	6 A2-12	42054	Needle Bar	1
20	6 A2-13	81X1	Needle	1
21	6 A2-14	228	Thread Retainer Bracket	1
22	6 A2-15	42061	Needle Bar Connector	1
23	6 A2-16	17	Needle Bar Connector Screw	1
24	6 A2-17	42047	Connecting Link Pin	2
25	6 A2-18	42055	Connecting Link	1
26	6 A2-19	90	Connecting Link Pin Set Screw	1
27	6 A2-20	42004	Needle Bar Crank	1
28	6 A2-21	1238	Needle Bar Crank Set Screw	2
		1258	Oscillating Shaft Crank Screw	3
29	6 A2-22	132589	Oscillating Shaft Bushing	2
30	6 A2-09		Oscillating Shaft Bushing Screw	1
31	6 A2-23	42105	Oscillating Shaft	1
32	6 A2-24	42103	Oscillating Shaft Crank	1
33	6 A2-25	42074	Ball Stud	1
34	6 A2-26	42077	Ball stud Guide	1
35	6 A2-27	171	Ball Stud Guide Screw	1
36	6 A2-28	42162	Thread Take-up	2
37	6 A2-19	197	Thread Take-up Screw	6
38	6 A2-29		Thread Tension Disc Pad	1
39	6 A2-17/1		Connecting Link Pin Screw	

GN1
3. Feed lifter&feed



GN1

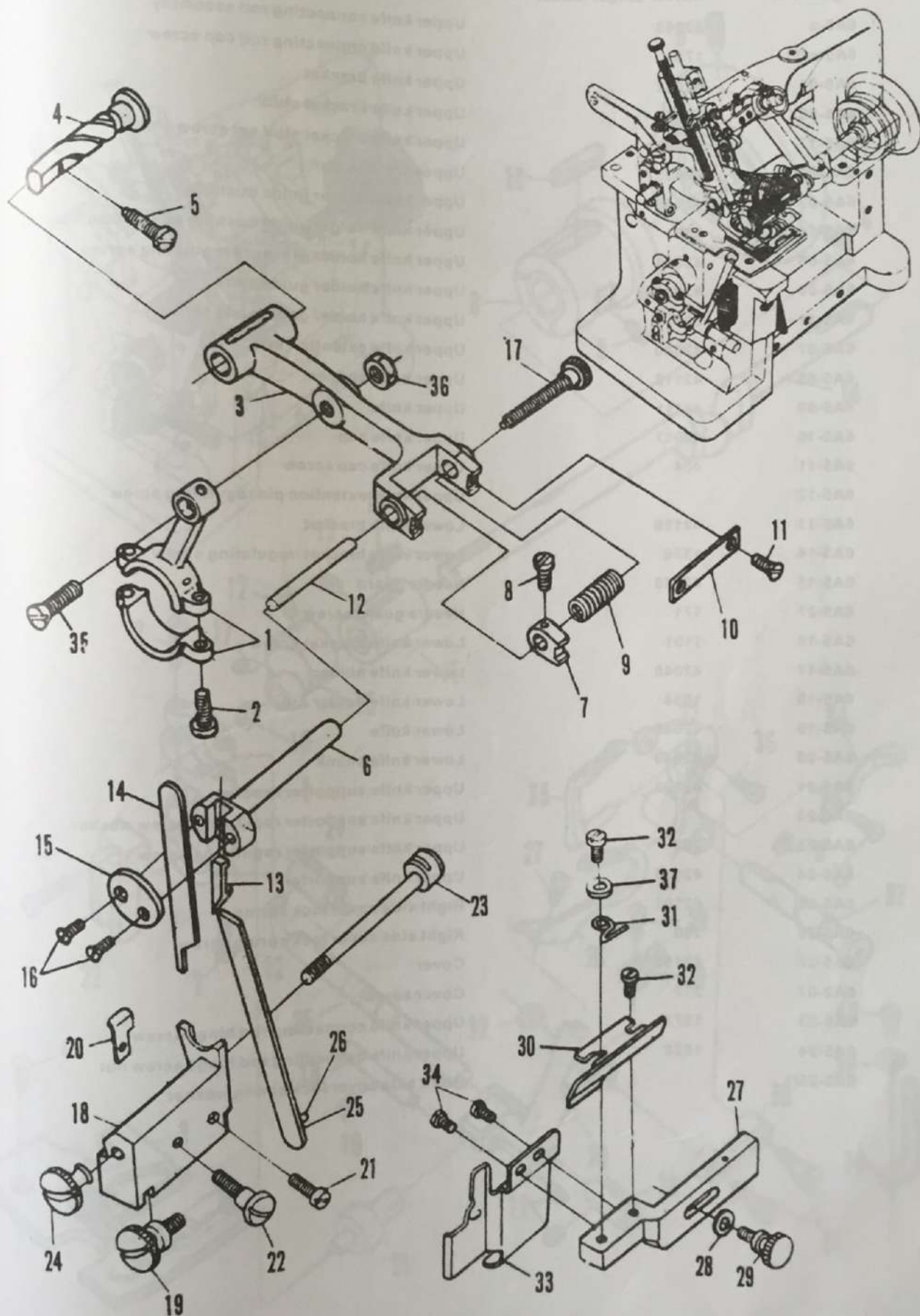
3.Feed lifter&feed

Ref.	Figure No.	No. for Singer Model	Description	QTY
1	6A3-a	42008	Feed bar connecting rod assembly	1
2	6A2-b 03	1057	Feed bar connecting rod cap screw	2
3	6A6-23	1373	Feed bar connecting rod hinge screw	1
	6A6-23	1373	Feed lifter connecting rod hinge screw	1
4	6A6-24	1520	Feed bar connecting rod nut	1
	6A6-24	1520	Feed lifter connecting rod rod nut	1
5	6A3-10	42014	Feed regulator(large)	1
6	6A2-21	1258	Feed regulator(large) set screw	2
7	6A6-21	233	Feed regulator(large) stop screw	1
8	6A3-30	42016	Feed regulator(large) stud	1
9	6A3-03	42012	Feed lifting/Upper knife cam	1
10	6A3-03/2	462	Feed lifting/Upper knife cam screw	2
11	6A3-04	42013	Feed lifting connection	1
12	6A3-01	42182	Feed dog	1
13	6A3-26	190	Feed dog screw	1
14	6A3-02	42151	Feed bar	1
15	6A3-05	2007	Feed bar pin	1
16	6A3-07	1253	Feed bar pin set screw	1
17	6A3-08		Feed bar pin thrust collar	1
18	6A4-a07		Feed bar pin Thrust collar screw	2
19	6A3-06	42154	Feed bar Rocking bracket	1
20	6A3-09	42098	Feed bar(large) spindle	1
21	6A6-16	42097	Feed bar(large) spindle bushing	2
22	6A2-21	1036	Bushing screw	2
23	6A3-25	42021	Feed lifter crank	1
24	J0.0.45	157	Feed lifter crank screw	1
25	6A3-27	42015	Feed lifter connecting rod	1
26	6A3-27/1	1012	Feed lifter connecting rod clamping screw	1
27	6A3-28	42017	Feed regulator indicator	1
28	6A5-26	190	Feed regulator indicator screw	1
29	6A3-13	1374	Feed regulating screw	1
30	6A3-12	19044	feed regulating screw washer	1
31	6A3-14	1680	Feed regulating screw nut	1
32	6A3-15	42011	Feed cam	1
33	6A3-16	453	Feed cam screw	2
34	6A3-17	42149	Differential feed dog	1
35	6A3-18	203	Differential feed dog screw	1
36	6A3-19	42147	Differential feed bar	1
37	6A3-20	1132	Differential feed bar screw	3
38	6A3-21	42148	Differential feed bar connecting link	1
39	6A3-22	42150	Feed regulator (small)	1
40	6A3-23	190	Feed regulator (small) clamping screw	1
41	6A3-24	1444	Feed regulator (small) regulating screw	1

GN1
4. Presser foot

Ref.	Figure No.	No. for Singer Model	Description
0	6 A4-a	42185	Presser foot assembly
1	6 A4-a 01		Stitch finger
2	6 A4-21		Stitch finger screw
3	6 A4-a 02		Presser foot
4	6 A4-a01	1378	Pressure regulating thumb screw
5	6 A4-a02	42071	Pressure spring
6	6 A4-a03		Presse bar
7	6 A4-a04	1324	Presser foot screw
8	6 A4-a05	19044	Presser fot screw washer
9	6 A4-a06	42069	Presse foot screw holder
10	6 A4-a07	1377	Presser lifting eccentric screw
11	6 A4-18	1547	Presser lifting eccentric screw nut
	6 A4-18	1547	Presser lifting lever regulating screw nut
12	6 A4-08	42045	Presser foot holder stud
13	6 A4-09	1120	Presser foot holder stud screw
14	6 A4-10	42070	Presser foot lifting handle
15	6 A4-11	85	Presser foot lifting handle screw
16	6 A4-12	42130	Presser lifting lever
17	6 A4-13	42132	Presser lifting lever spring
18	6 A4-14	1301	Presser lifting lever screw
19	6 A4-15	42131	Presser lifting lever base
20	6 A4-16	1229	Presser lifting lever base screw
21	6 A4-17	1148	Presser lifting lever regulating screw

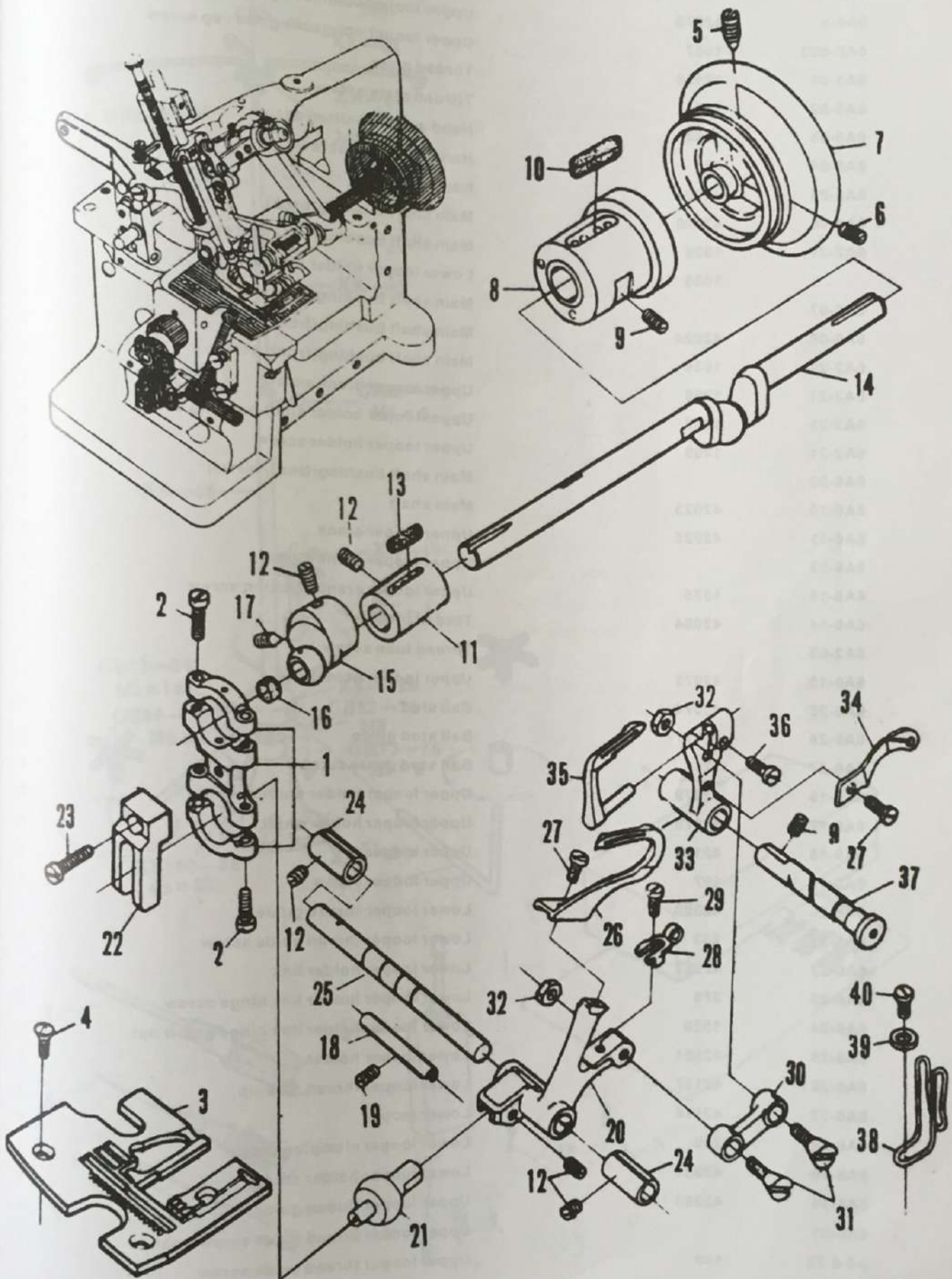
GN1
5. Knife holder



GN1
5. Knife holder

Ref.	Figure No.	No. for Singer Model	Description
1	6A5-a	42043	Upper knife connecting rod assembly
2	6A5-a 03	175	Upper knife connecting rod cap screw
3	6A5-01	42042	Upper knife bracket
4	6A5-08	42045	Upper knife bracket stud
5	6A5-17	1148	Upper knife bracket stud set screw
6	6A5-02	42035	Upper knife holder
7	6A5-03	42038	Upper knife holder guide bushing
8	6A5-14	336	Upper knife holder guide bushing position screw
9	6A5-05	42041	Upper knife holder pressure regulating spring
10	6A5-06	42039	Upper knife holder guide plate
11	6A5-11	621	Upper knife holder guide plate screw
12	6A5-07	42040	Upper knife extention pin
13	6A5-08	42112	Upper knife spacer
14	6A5-09	42111	Upper knife
15	6A5-10	42037	Upper knife cap
16	6A5-11	404	Upper knife cap screw
17	6A5-12		Upper knife extention pin regulating screw
18	6A5-13	42156	Lower knife bracket
19	6A5-14	1376	Lower knife bracket regulating screw
20	6A5-15	42066	Needle guard
21	6A5-27	171	Needle guard screw
22	6A5-16	1101	Lower knife bracket screw
23	6A5-17	42048	Lower knife holder
24	6A5-18	1534	Lower knife holder nut
25	6A5-19	42046	Lower knife
26	6A5-20	42049	Lower knife shank
27	6A5-21	42102	Upper knife supporter bracket
28	6A5-22		Upper knife supporter regulating screw washer
29	6A5-23	283	Upper knife supporter regulating screw
30	6A5-24	42030	Upper knife supporter
31	6A5-25	42101	Right side cover lock spring
32	6A5-26	190	Right side cover lock spring screw
33	6A5-27	42153	Cover
34	6A2-07	217	Cover screw
35	6A6-23	1373	Upper knife connecting rod hinge screw
36	6A5-24	1520	Upper knife connecting rod hinge screw nut
37	6A5-25/1		Right side cover lock spring washer

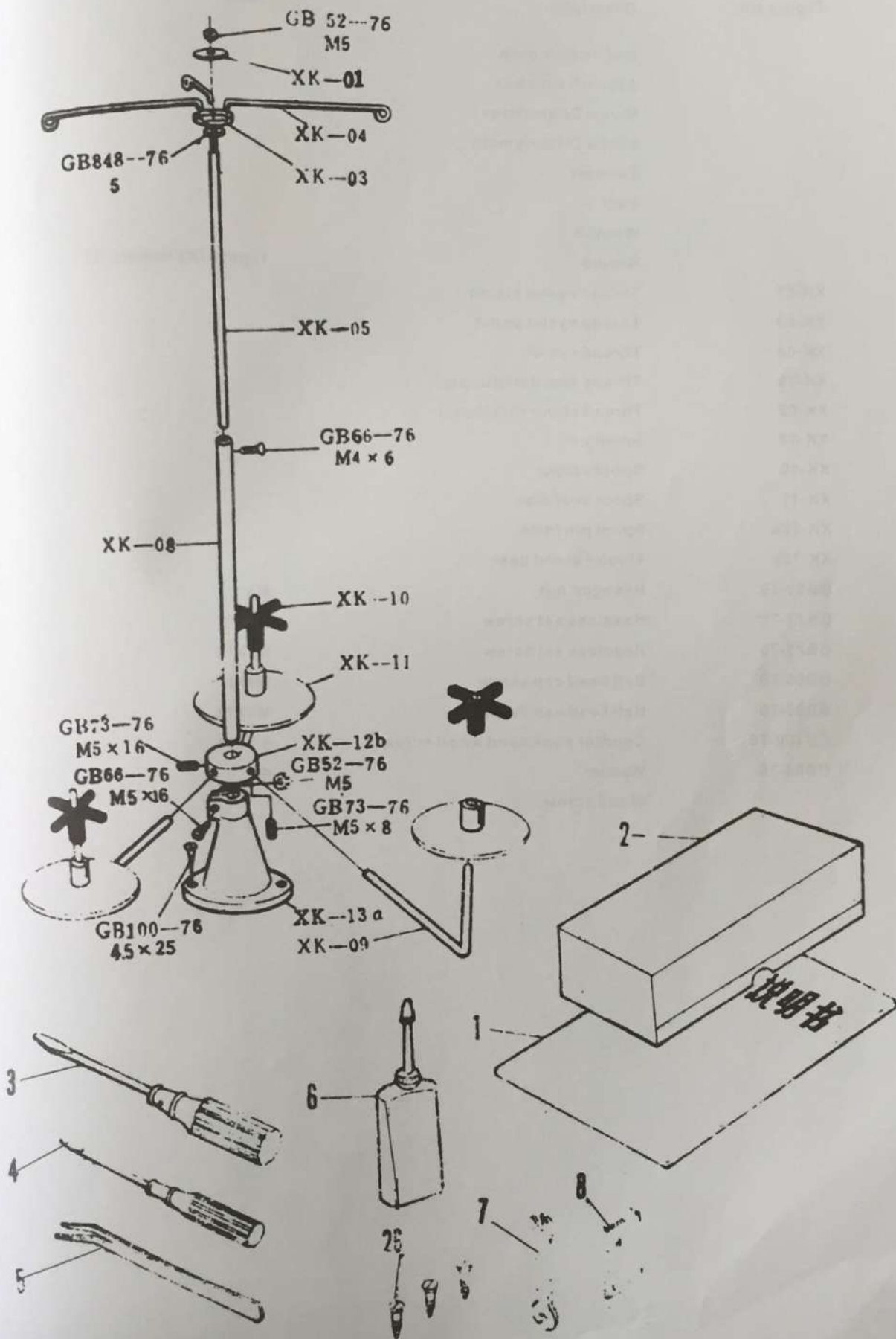
GN1
6. Upper & lower looper



GN1
6.Upper&lower looper

Ref.	Figure No.	No. for Singer Model	Description	Qty
1	6A6-a	42075	Upper looper connecting rod assembly	1
2	6A2-b03	1057	Upper looper connecting rod cap screw	1
3	6A5-01	42186	Thread plate	1
4	6A5-02	742	Thread plate screw	2
5	6A5-03	1354	Hand wheel position scrw	1
6	6A5-04	424	Hand wheel set screw	1
7	6A5-05	42001	Hand wheel	1
8	6A5-06	42026	Main shaft bushing(back)	1
9	6A2-21	1036	Main shaft bushing(back) screw	1
		1036	Lower looper holder stud screw	1
10	6A6-07		Main shaft Bushing(back) oil felt	1
11	6A6-08	42024	Main shaft bushing(front)	1
12	6A2-21	1036	Main shaft bushing(front) screw	1
	6A2-21	1259	Upper looper crank screw	1
	6A2-21	1036	Upper looper holder shaft bushing screw	2
	6A2-21	1259	Upper looper holder screw	1
13	6A6-09		Main shaft bushing(front) oil felt	1
14	6A6-10	42023	Main shaft	1
15	6A6-11	42025	Upper looper crank	1
16	6A6-12		Upper looper crank oil felt	1
17	6A6-13	1375	Upper looper crank position screw	1
18	6A6-14	42084	Thread tube	1
19	6A2-09		Thread tube screw	1
20	6A6-15	42073	Upper looper holder	1
21	6A6-25	42074	Ball stud	1
22	6A6-26	42077	Ball stud guide	1
23	6A6-27	171	Ball stud guide screw	1
24	6A6-16	42079	Upper looper holder shaft bushing	2
25	6A6-17	42078	Upper looper holder shaft	1
26	6A6-18	42166	Upper looper	1
27	6A6-19	197	Upper looper screw	1
28	6A6-20	42083	Lower looper thread guide	1
29	6A6-21	233	Lower looper thread guide screw	1
30	6A6-22	42052	Lower looper holder link	1
31	6A6-23	378	Lower looper holder link hinge screw	2
32	6A6-24	1520	Lower looper holder link hinge screw nut	2
33	6A6-25	42051	Lower looper holder	1
34	6A6-26	42127	Lower looper thread take-up	1
35	6A6-27	42114	Lower looper	1
36	6A6-28	209	Lower looper clamping screw	1
37	6A6-29	42053	Lower looper holder stud	1
38	6A6-30	42093	Upper looper thread guide	1
39	6A6-31		Upper looper thread guide screw washer	1
40	J 0.0.72	190	Upper looper thread guide screw	1

GN1
7. Thread stand



GN1

7. Thread stand

Ref.	Figure No.	Description	Note
1		Instruction book	
2		Attachments box	
3		Screw Driver(large)	
4		Screw Driver(small)	
5		Tweezer	
6		oiler	
7		Wrench	
8		Needle	type: 81X1 Needle: 11
9	XK-01	Thread eyelet platen	
10	XK-03	Thread eyelet pallet	
11	XK-04	Thread eyelet	
12	XK-05	Thread stand rod(upper)	
13	XK-08	Thread stand rod(lower)	
14	XK-09	Spool pin	
15	XK-10	Spool stoper	
16	XK-11	Spool seat disc	
17	XK-12b	Spool pin joint	
18	XK-13a	Thread stand base	
19	GB52-76	Hexagon nut	M5
20	GB73-76	Headless set screw	M5X8
21	GB73-76	Headless set screw	M5X16
22	GB66-76	Ball head cap screw	M4X6
23	GB66-76	Ball head cap screw	M5X16
24	GB100-76	Counter sunk head wood screw	4.5X25
25	GB95-76	Washer	Φ5
26		Wood screw	