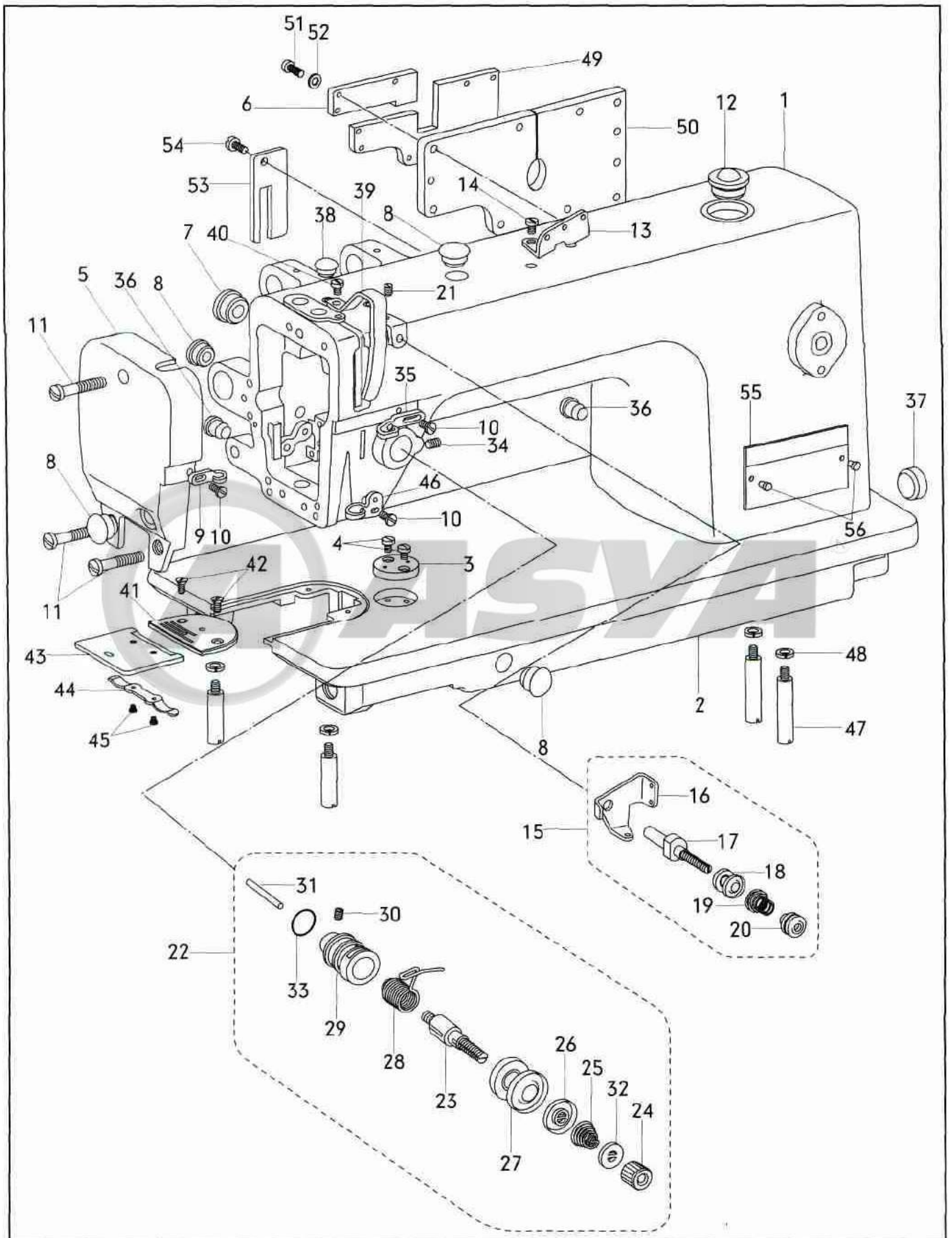


MÁQUINA RETA TYPICAL GC0302



1: Machine Arm and Bed



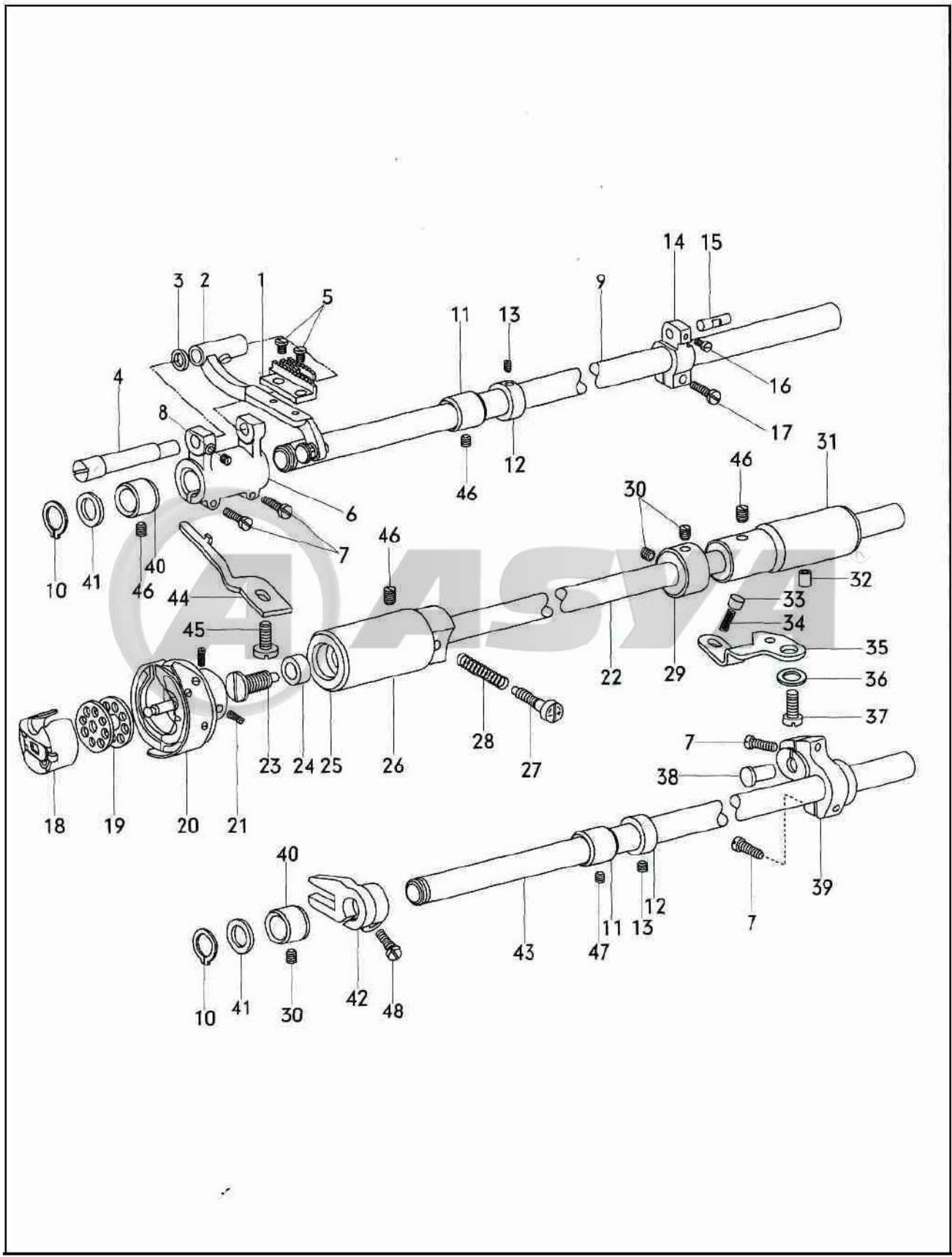
1: Machine Arm and Bed

| No. | Part number | Name | Qt. | Remark |
|-----|------------------------|----------------------------------|-----|--|
| 1 | 7WF4-002(11WF4-004) | Arm | 1 | Part number shown in parentheses is for GC0302CX |
| 2 | 7WF4-001 | Bed | 1 | |
| 3 | 7WF4-005 | Holder | 1 | |
| 4 | 1WF3-025 | Screw | 2 | GB827-86 2.5X5 |
| 5 | 7WF4-003 | Faceplate | 1 | |
| 6 | 7KT4-010 | Rear cover(small) | 1 | |
| 7 | 22T1-003G | Rubber Plug(N19) | 1 | |
| 8 | 22T1-003G | Rubber plug(N1.8) | 4 | |
| 9 | 22T1-003G | Thread finger | 1 | |
| 10 | 22T1-003G | Screw | 3 | |
| 11 | 7WF4-004 | Screw | 3 | |
| 12 | HWF4-005 | Oil screen complete | 1 | |
| 13 | 36T2-004 | Three-eye finger | 1 | |
| 14 | 36T2-005 | Screw | 1 | |
| 15 | 36T2-006D | Thread tension complete | 1 | |
| 16 | 36T2-006D | Thread pass-by plate | 1 | |
| 17 | 36T2-006D | Screw | 1 | |
| 18 | 22T1-009E | Tension disc | 2 | |
| 19 | 36T2-006D | Spring | 1 | |
| 20 | 36T2-006D | Nut | 1 | |
| 21 | 22T1-011 | Set screw | 1 | |
| 22 | 22T1-012F | Thread tension complete | 1 | |
| 23 | 22T1-012F | Screw | 1 | |
| 24 | 22T1-012F | Nut | 1 | |
| 25 | 33T4-008G | Spring | 1 | |
| 26 | 22T1-012F | Thread tension complete | 1 | |
| 27 | 22T1-012F | Thread tension disc | 2 | |
| 28 | 22T1-012F | Thread take-up spring | 1 | |
| 29 | 22T1-012F | Thread tension adjusting bracket | 1 | |
| 30 | 22T1-012F | Screw | 1 | |
| 31 | 22T1-012F | Thread release pin | 1 | |
| 32 | 22T1-012F | Stopping plate | 1 | |
| 33 | 22T1-012F ₁ | O-type ring | 1 | |
| 34 | 22T1-013 | Set screw | 1 | |
| 35 | 22T1-014 | Thread finger | 1 | |
| 36 | 22T1-015 | Rubber plug(N8.8) | 2 | |
| 37 | 22T1-016 | Rubberplug(N27) | 1 | |
| 38 | 22T1-017 | Rubberplug(N5.7) | 1 | |
| 39 | 33T4-007 | Thread take-up lever guard. | 1 | |
| 40 | 7WF5-017 | Screw | 1 | |
| 41 | 33T4-012(11WF4-003) | Throat plate | 1 | Part number shown in parentheses is for GC0302CX |
| 42 | 22T1-020 | Screw | 2 | |
| 43 | 7WF4-006 | Sliding plate | 1 | |
| 44 | 22T1-013F | Spring | 1 | |
| 45 | 22T1-013F | Screw | 2 | |
| 46 | 7WF4-015 | Lower thread finger | 1 | |
| 47 | 7WF4-013 | Bed leg | 4 | |
| 48 | | Washer | 4 | Washer GB93-87 |
| 49 | 7WF4-007 | Rear cover | 1 | |
| 50 | 7WF4-008 | Seal gasket | 1 | |
| 51 | 22T1-006 | Screw | 10 | |
| 52 | 22T1-007 | Washer | 10 | |
| 53 | 7WF4-011 | Oil retaining plate | 1 | |
| 54 | 22T4-004 | Screw | 1 | |
| 55 | 7WF4-012(11WF4-001) | Trade mark plate | 1 | Part number shown in parentheses is for GC0302CX |
| 56 | | Rivet | 2 | GB827-86 2.5X5 |

2: Arm Shaft and Vertical Shaft Needle bar Thread Take-up

| No. | Part number | Name | Qt. | Remark |
|-----|----------------------------|----------------------------------|-----|-----------------------------|
| 1 | 4WF1-001A | Arm shaft | 1 | |
| 2 | 22T3-001A | Rubber plug | 2 | |
| 3 | 22T3-002B | Collar | 1 | |
| 4 | 22T3-002B | Screw | 2 | |
| 5 | 33T1-007D | Front bushing | 1 | |
| 6 | 4WF1-002 | Middle bushing | 1 | |
| 7 | J0.0.40 | Screw | 3 | |
| 8 | 22T3-005 | Rear bushing | 1 | |
| 9 | 22T3-006F | Oil seal complete | 1 | |
| 10 | 22T3-008 | Screw | 1 | |
| 11 | 22T3-007C | Screw | 2 | |
| 12 | 36T3-003D | Feed dog lift cam | 1 | |
| 13 | 36T3-003D | Screw | 3 | |
| 14 | 36T3-004 | Separating piece for cam | 1 | |
| 15 | 22T3-009DC | Link | 1 | |
| 16 | 15WF1-001 | Vertical shaft | 1 | |
| 17 | 22T3-010E _{2a1-2} | Bevel gear | 1 | |
| 18 | 22T3-010E _{2a2-2} | Vertical shaft bevel gear(upper) | 1 | |
| 19 | 22T2-005B | Screw | 8 | |
| 20 | 22T3-010E _{2b2-2} | Rock shaft bevel gear | 1 | |
| 21 | 22T3-010E _{2b2-2} | Vertical shaft bevel gear(lower) | 1 | |
| 22 | 4WF1-003A | Vertical shaft bushing(upper) | 1 | |
| 23 | 33T1-023P | Vertical shaft bushing(lower) | 1 | |
| 24 | 33T1-023A | Thread take-up lever complete | 1 | |
| 25 | J0.0.40 | Screw | 1 | |
| 26 | 33T1-002 | Hinge pin | 1 | |
| 27 | 33T1-006G | Needle bar crank | 1 | |
| 28 | 33T1-006G | Screw | 1 | |
| 29 | 22T2-005B | Set screw | 1 | |
| 30 | 33T1-006G | Screw | 1 | |
| 31 | 61-04-01/B | Set screw | 1 | |
| 32 | 22T2-008 | Needle bar upper bushing | 1 | |
| 33 | J0.0.35 | Screw | 1 | |
| 34 | 22T2-011 | Rubber plug (N8.8) | 1 | |
| 35 | 34T1-001 | Needle bar lower bushing | 1 | |
| 36 | 22T2-013 | Screw | 1 | |
| 37 | 33T1-017 | Needle bar | 1 | |
| 38 | 22T2-015 | Thread finger | 1 | |
| 39 | | Needle | 1 | DPX17 23 (25# for GC0302CX) |
| 40 | 22T2-017 | Screw | 1 | |
| 41 | 33T1-012 | Rail | 1 | |
| 42 | 33T1-013 | Sliding block | 1 | |
| 43 | 22T2-019 | Screw | 2 | |
| 44 | 22T2-001A | Needle bar adaptor | 1 | |
| 45 | | Felt | 1 | |
| 46 | 7WF1-001 | Balance wheel | 1 | |
| 47 | 33T1-005 | Washer | 1 | |

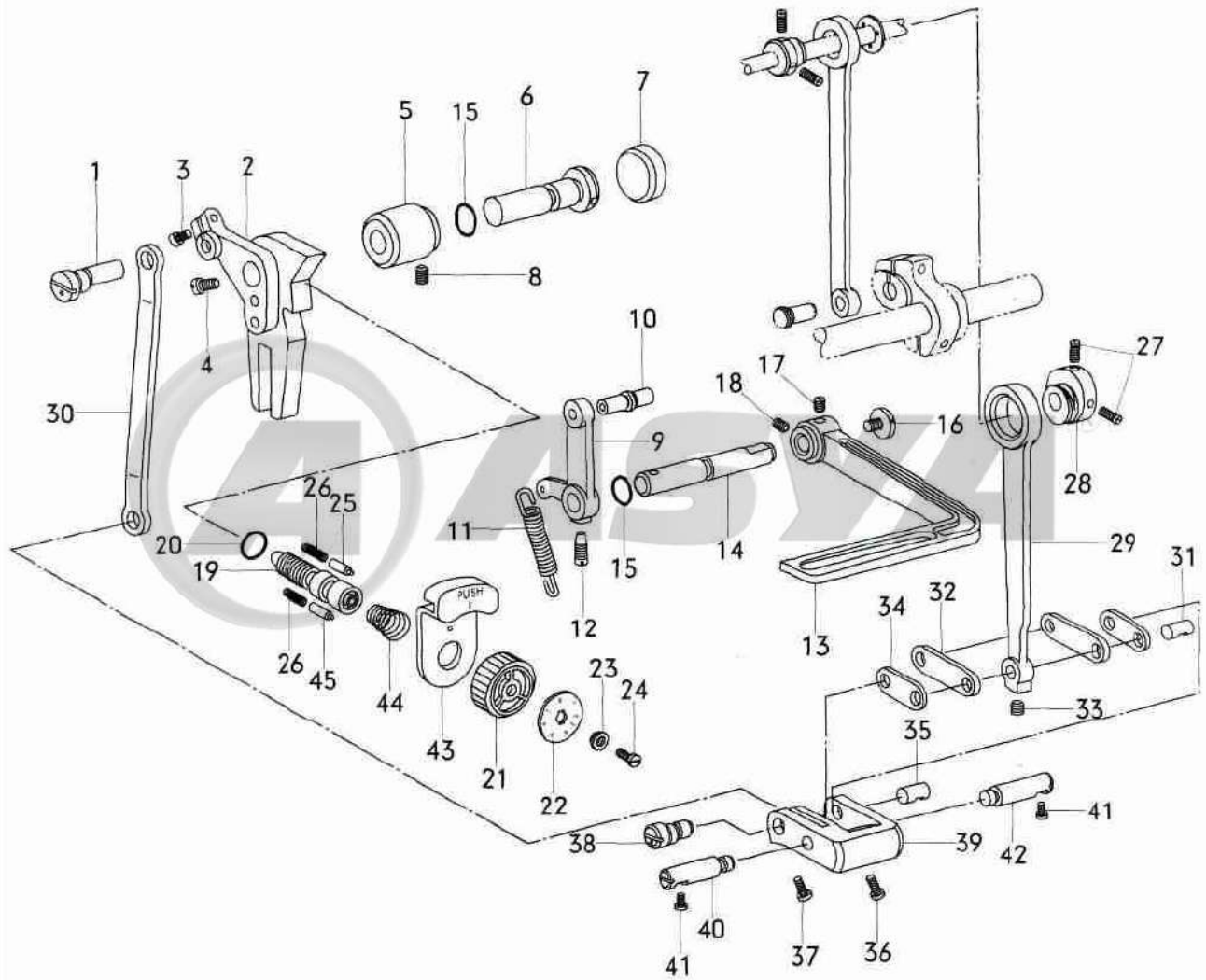
3: Feed Dog Lift And Feed And Thread Looping



3: Feed Dog Lift And Feed And Thread Looping

| No. | Part number | Name | Qt. | Remark |
|-----|--------------------------|------------------------------|-----|--|
| 1 | 20T3-007(4WF2-001) | Feed dog | 1 | Part number shown in parentheses is for GC0302CX |
| 2 | 36T4-001A ₁ | Feed dog support complete | 1 | |
| 3 | 51T5-001A ₁ | Washer | 1 | |
| 4 | 36T4-001A ₂ | Eccentric shaft | 1 | |
| 5 | J0.0.51 | Screw | 2 | |
| 6 | 4WF2-002 | Feed dog support crank | 1 | |
| 7 | J0.0.71 | Screw | 4 | |
| 8 | 22T2-019 | Screw | 1 | |
| 9 | 7WF-004 | Feed shaft | 1 | |
| 10 | | Stop ring | 2 | Retainer ring 15 GB894-76 |
| 11 | 7WF2-003 | Feed shaft middle bushing | 2 | |
| 12 | 22T6-005B | Collar | 2 | |
| 13 | 22T3-002B ₂ | Screw | 4 | |
| 14 | 4WF2-006 | Feed shaft rear crank | 1 | |
| 15 | 36T4-004H ₁ | Link pin | 1 | |
| 16 | 36T5-008E ₅ | Screw | 1 | |
| 17 | 22T6-008D ₃ | Tension screw | 1 | |
| 18 | 33T1-028R | Bobbin case complete | 1 | |
| 19 | 33T1-027 | Bobbin | 1 | |
| 20 | 33T1-018J(11WF4-005) | Hook complete | 1 | Part number shown in parentheses is for GC0302CX |
| 21 | 33T1-018J ₄ | Hook screw | 3 | |
| 22 | 36T4-008D | Rock shaft | 1 | |
| 23 | | Screw | 1 | |
| 24 | | Plug | 1 | |
| 25 | 22T4-003 | Oil seal | 1 | |
| 26 | 4WF1-005 | Front bushing | 1 | |
| 27 | 22T4-005 | Screw | 1 | |
| 28 | 22T4-006 | Spring | 1 | |
| 29 | 22T4-002B1 | Collar | 1 | |
| 30 | J0.0.35 | Screw | 3 | |
| 31 | 4WF1-004 | Rear bushing | 1 | |
| 32 | 22T4-007Q ₂ | Oil tube | 1 | |
| 33 | 36T4-015 | Plunge | 1 | |
| 34 | 36T4-016 | Spring | 1 | |
| 35 | 22T4-010 | Stopper | 1 | |
| 36 | | Washer | 1 | Retainer ring 6 GB894-76 |
| 37 | 22T8-009 | Screw | 1 | |
| 38 | 22T6-007 | Hinge pin | 1 | |
| 39 | 4WF2-003 | Feed dog lift rear crank | 1 | |
| 40 | 7WF2-002 | Feed shaft front bushing | 2 | |
| 41 | 51T5-013 | Washer | 2 | |
| 42 | 36 L4-018G ₀₁ | Feed dog lift fork | 1 | |
| 43 | 7WF2-001 | Shaft for feed dog lift fork | 1 | |
| 44 | 33T1-029 | Hook set bracket | 1 | |
| 45 | 22T4-015 | Screw | 1 | |
| 46 | 22T1-013 | Screw | 4 | |
| 47 | J0.0.40 | Screw | 1 | |
| 48 | 22T6-008D | Screw | 1 | |

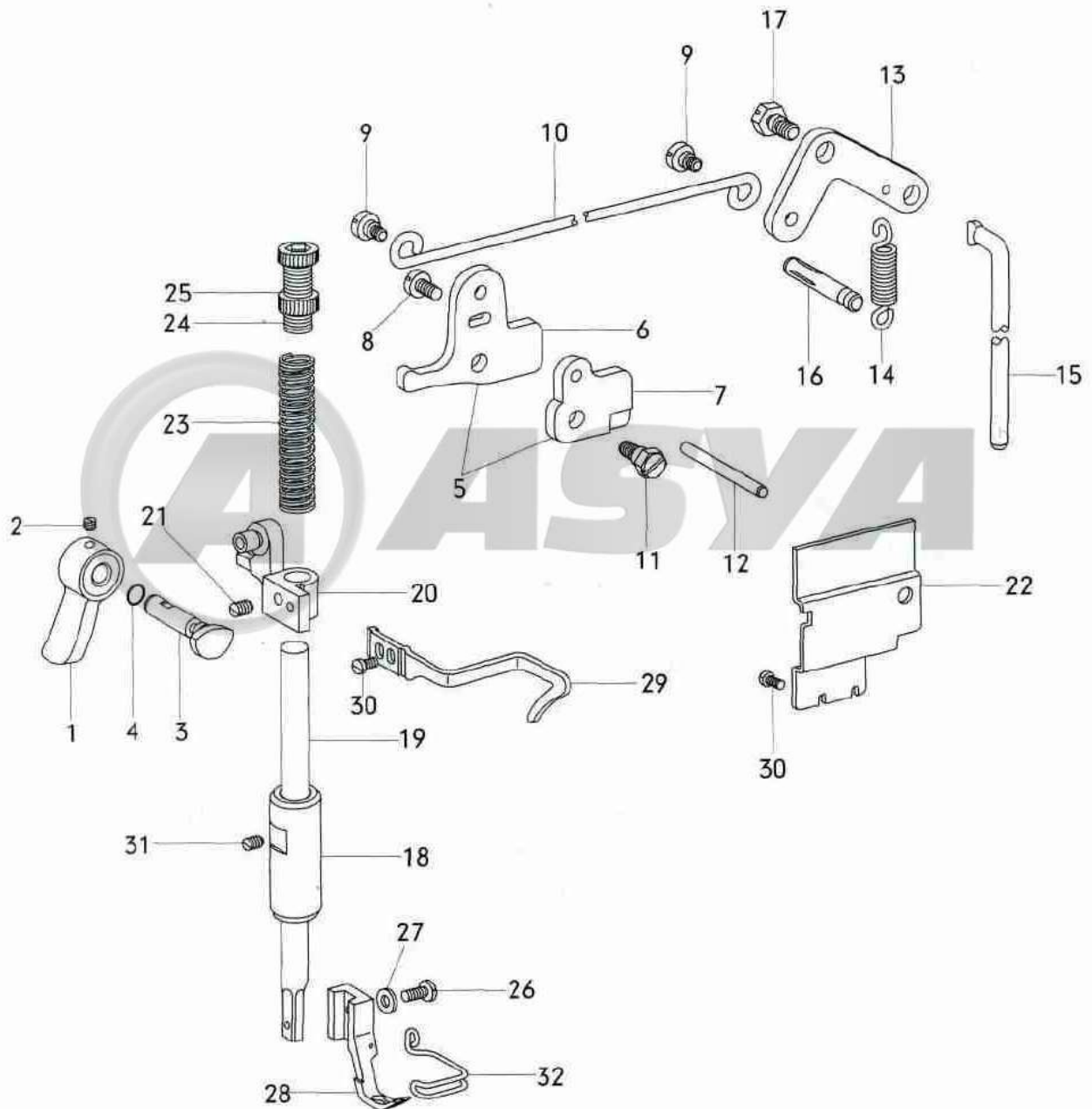
4: Feed Mechanism



4: Feed Mechanism

| No. | Part number | Name | Qt. | Remark |
|-----|---------------------------|---------------------------------|-----|---------------------------|
| 1 | 36T5-001 | Link pin | 1 | |
| 2 | 4WF5-005 | Stitch length bracket | 1 | |
| 3 | 22T6-008D | Screw | 1 | |
| 4 | 22T5-010D | Screw | 1 | |
| 5 | 4WF2-008 | Bushing | 1 | |
| 6 | 22T5-004 | Shaft for stitch length bracket | 1 | |
| 7 | 36T5-003 | Rubber plug(φ20) | 1 | |
| 8 | J0.0.40 | Set screw | 1 | |
| 9 | 7WF2-009 | Reverse feed lever crank | 1 | |
| 10 | 7WF2-008A | Shaft for block | 1 | |
| 11 | 22T5-012E | Spring | 1 | |
| 12 | 22T5-013 | Screw | 1 | |
| 13 | 7WF2-007A | Reverse feed lever | 1 | |
| 14 | 22T5-010D _a | Pin shaft | 1 | |
| 15 | | O-type ring | 2 | O-type ring 8X1.9 GB1235 |
| 16 | 22T5-010D ₃ | Tension screw | 1 | |
| 17 | 17T5-016 | Set screw | 1 | |
| 18 | 17T5-017 | Screw | 1 | |
| 19 | 36T5-007D | Screw bolt for stitch length | 1 | |
| 20 | | O-type rubber ring | 1 | O-type ring 14X2.4 GB1235 |
| 21 | 36T5-007D ₂ | Dial cup | 1 | |
| 22 | 4WF2-004A | Dial face | 1 | |
| 23 | 36T5-007D | Screw bushing | 1 | |
| 24 | 36T5-007D ₃ | Screw | 1 | |
| 25 | 36T5-012 | Stop pin | 1 | |
| 26 | 22T5-009 | Spring | 1 | |
| 27 | 36T3-003D | Screw | 2 | |
| 28 | 36T5-008E | Feed cam | 1 | |
| 29 | 4WF2-009A | Feed link | 1 | |
| 30 | 4WF2-009B | Stitch adjusting link | 1 | |
| 31 | 82T2-003C _{a0-1} | Pin | 1 | |
| 32 | 36T5-008E _{H02} | Link | 2 | |
| 33 | 36T5-008E | Screw | 1 | |
| 34 | 36T5-008E _{H01} | Link | 2 | |
| 35 | 82T2-003C _{a0-2} | Pin for link | 1 | |
| 36 | 36T5-008E | Screw | 1 | |
| 37 | 36T5-008E | Screw | 1 | |
| 38 | 36T5-008E | Link eccentric shaft | 1 | |
| 39 | 36T5-008E ₀ | Stitch length adjusting crank | 1 | |
| 40 | 5WF1-002 | Set pin(left) | 1 | |
| 41 | 22T6-008D | Screw | 2 | |
| 42 | 5WF1-001 | Set pin(right) | 1 | |
| 43 | 7WF2-005 | Push lever | 1 | |
| 44 | 36T5-011 | Spring | 1 | |
| 45 | 7WF2-006 | Pin | 1 | |

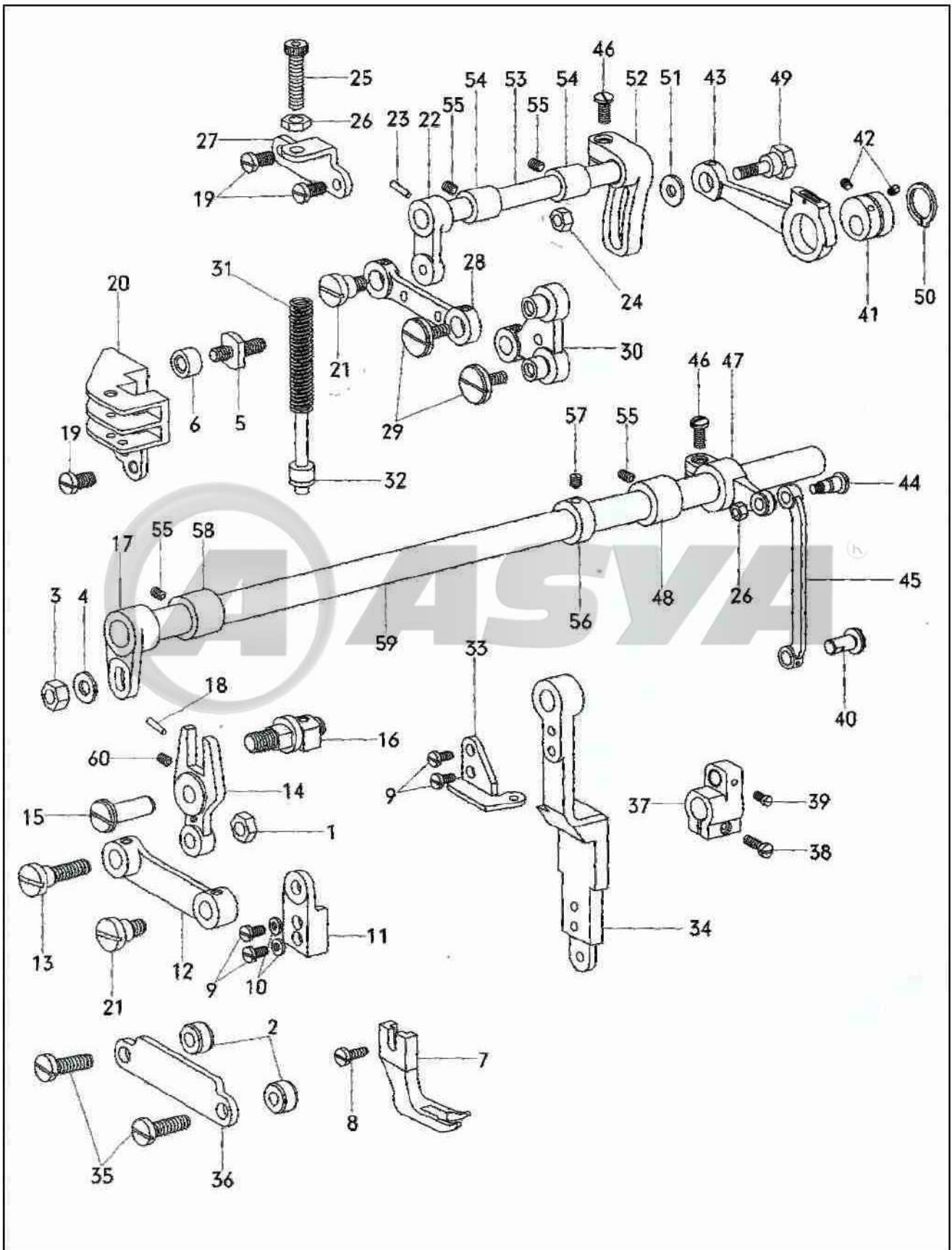
5: Presser Foot



5: Presser Foot

| No. | Part number | Name | Qt. | Remark |
|-----|------------------------|---------------------------------|-----|--|
| 1 | 34T3-304 | Presser foot lift bar | 1 | |
| 2 | 22T7-001A ₂ | Screw | 1 | |
| 3 | 1KT4-005 | Presser bar lift cam | 1 | |
| 4 | | Oil seal | 1 | O-type ring 8 X 1.9 GB 1235 |
| 5 | 22T7-004B | Knee lifter lever(left)complete | 1 | |
| 6 | 22T7-004B _a | Lever(left) | 1 | |
| 7 | 22T7-004B _b | Thread releasing cam | 1 | |
| 8 | 22T7-004B _c | Screw | 1 | |
| 9 | 22T7-004B _d | Screw | 2 | |
| 10 | 22T7-004B _e | Knee lifter drawing bar | 1 | |
| 11 | 22T7-005A | Screw | 1 | |
| 12 | 35T3-305 | Thread releasing lever | 1 | |
| 13 | 22T7-007G | Knee lifter lever(right) | 1 | |
| 14 | 22T7-007G | Spring | 1 | |
| 15 | 4WF3-001 | Connecting rod | 1 | |
| 16 | 22T7-008 | Pin | 1 | |
| 17 | 22T7-005B | Screw | 1 | |
| 18 | 34T3-305 | Bushing for presser bar | 1 | |
| 19 | 22T7-010 | Presser bar | 1 | |
| 20 | 7WF3-001 | Guide for presser bar | 1 | |
| 21 | 61-04-01/B308 | Screw | 1 | |
| 22 | 7WF4-009 | Oil stop plate | 1 | |
| 23 | 20T4-002 | Spring | 1 | |
| 24 | 34T3-301 | Screw | 1 | |
| 25 | 22T7-014E | Nut | 1 | |
| 26 | 22T7-015 | Screw | 1 | |
| 27 | | Washer | 1 | Washer GB848-85-4 |
| 28 | 7WF3-003(11WF3-001) | Presser foot | 1 | Part number shown in parentheses is for GC0302CX |
| 29 | 7WF3-002 | Thread guide | 1 | |
| 30 | 22T2-004 | Screw | 3 | |
| 31 | 22T2-013 | Screw | 1 | |
| 32 | 1KT4-003 | Finger guard | 1 | |

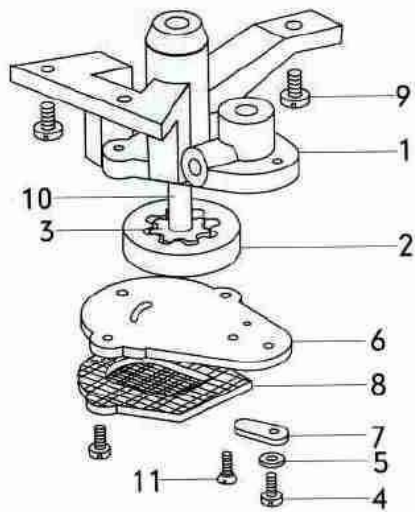
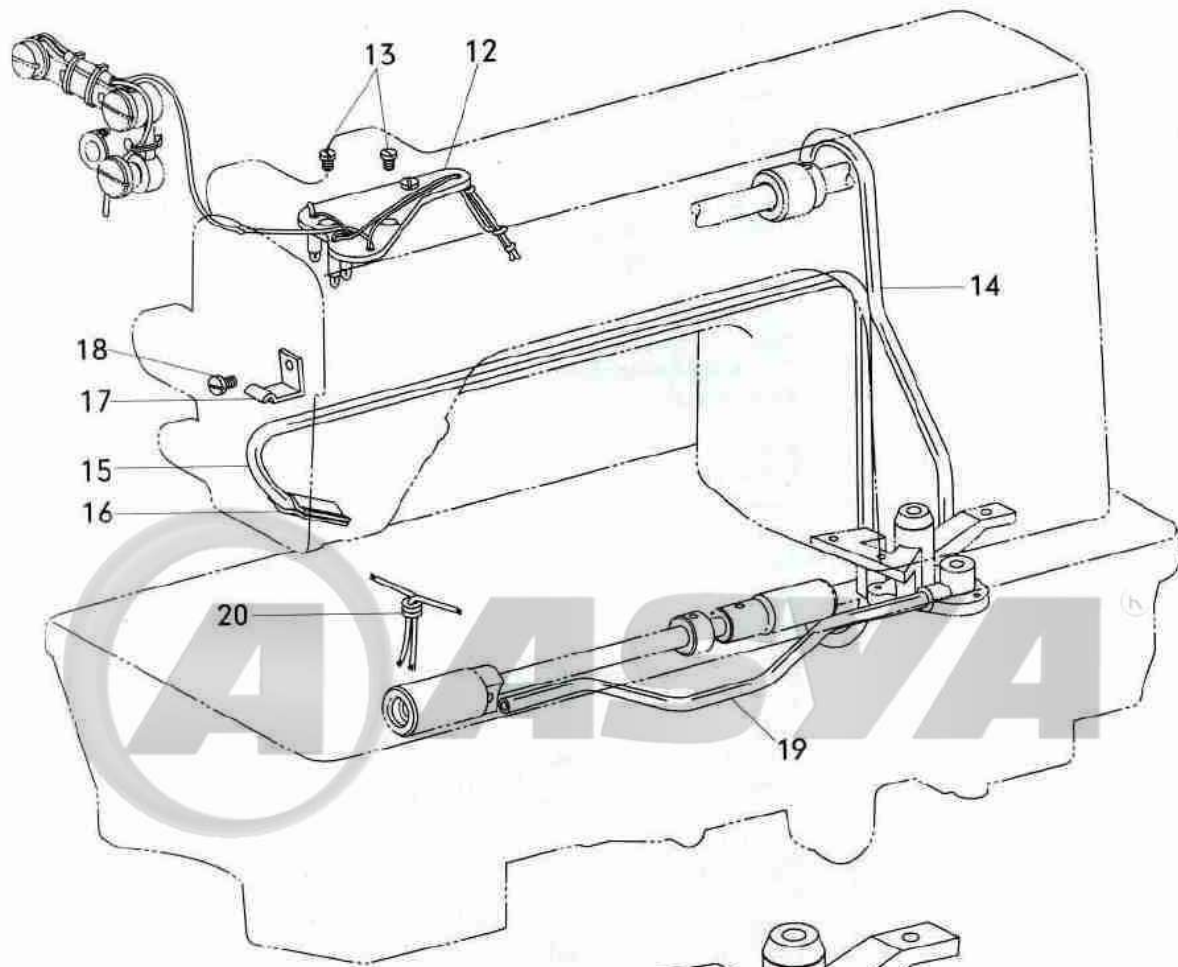
6: Upper Feed Parts



6: Upper Feed Parts

| No. | Part number | Name | Qt. | Remark |
|-----|-------------|-----------------------------|-----|---------------------------|
| 1 | 7WF5-001 | Nut | 1 | |
| 2 | 7WF5-002 | Shim | 2 | |
| 3 | 7WF5-003 | Nut | 1 | |
| 4 | 35T5-504 | Washer | 1 | Washer GB95-85-6 |
| 5 | 7WF5-004 | Guide shaft | 1 | |
| 6 | 7WF5-005 | Needle of bearing | 1 | |
| 7 | 7WF5-006 | Walking foot | 1 | |
| 8 | 7WF5-007 | Screw | 1 | |
| 9 | 7WF5-008 | Screw | 4 | |
| 10 | | Washer | 2 | Washer GB95-85-4 |
| 11 | 7WF5-009 | Holder for walking foot bar | 1 | |
| 12 | 7WF5-010 | Link of walking foot | 1 | |
| 13 | 7WF5-011 | Screw | 1 | |
| 14 | 7WF5-012 | Fork lever | 1 | |
| 15 | 7WF5-013 | Pin | 1 | |
| 16 | 7WF5-014A | Crank shaft complete | 1 | |
| 17 | 7WF5-016 | Front crank | 1 | |
| 18 | | Pin | 1 | Pin GB117-86A4X24 |
| 19 | 7WF5-017 | Screw | 4 | |
| 20 | 7WF5-018 | Guideplate | 1 | |
| 21 | 7WF5-019 | Screw | 2 | |
| 22 | 7WF5-020 | Crank | 1 | |
| 23 | | Pin | 1 | Pin GB117-86A4X20 |
| 24 | | Nut | 1 | GB173-86-M6X0.75 |
| 25 | 7WF5-021 | Screw | 1 | |
| 26 | 7WF5-022 | Nut | 2 | |
| 27 | 7WF5-023 | Bracket for adjusting screw | 1 | |
| 28 | 7WF5-024 | Link | 1 | |
| 29 | 7WF5-025 | Screw | 2 | |
| 30 | 7WF5-026 | Presser foot feed crank | 1 | |
| 31 | 7WF5-027 | Spring | 1 | |
| 32 | 7WF5-028 | Guidepin | 1 | |
| 33 | 7WF5-029 | Setplate | 1 | |
| 34 | 7WF5-030 | Walking foot lever | 1 | |
| 35 | 22T6-008D | Screw | 2 | |
| 36 | 7WF5-031 | Presseplate | 1 | |
| 37 | 5WF4-002 | Feed shaft middle crank | 1 | |
| 38 | J0.0.71 | Screw | 1 | |
| 39 | 36T5-008E | Pin screw | 1 | |
| 40 | 5WF4-001 | Connecting pin | 1 | |
| 41 | 7WF5-032 | Eccentric cam | 1 | |
| 42 | 7WF5-033 | Screw | 2 | |
| 43 | 7WF5-034A | Link complete | 1 | |
| 44 | 7WF5-037 | Screw | 1 | |
| 45 | 7WF5-038 | Link | 1 | |
| 46 | 7WF5-039 | Screw | 2 | |
| 47 | 7WF5-040 | Rear crank | 1 | |
| 48 | 7WF5-041 | Rear bushing | 1 | |
| 49 | 7WF5-042 | Screw | 1 | |
| 50 | | Split ring | 1 | Retainer ring GB894-86-25 |
| 51 | 7WF5-043 | Washer | 1 | |
| 52 | 7WF5-043 | Link adjusting crank | 1 | |
| 53 | 7WF5-044 | Presser foot lift shaft | 1 | |
| 54 | 7WF5-045 | Bushing | 2 | |
| 55 | J0.0.35 | Screw | 4 | |
| 56 | 22T3-002B | Collar | 1 | |
| 57 | 22T3-002B | Screw | 2 | |
| 58 | 7WF5-046 | Front bushing | 1 | |
| 59 | 7WF5-047 | Presser foot swing shaft | 1 | |
| 60 | 7WF5-048 | Screw | 1 | |

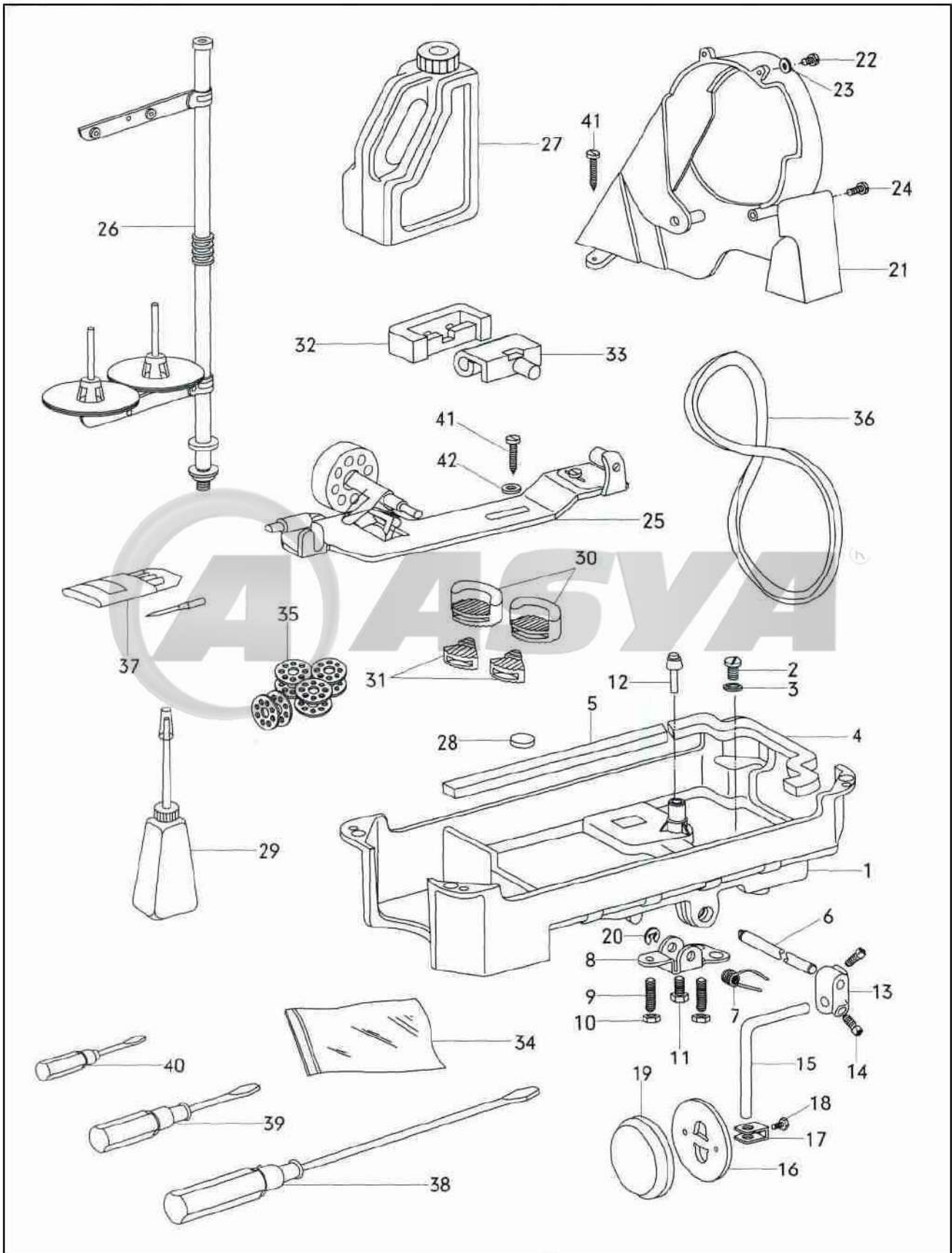
7: Oil Pump



7: Oil Pump

| No. | Part number | Name | Qt. | Remark |
|-----|-------------|-----------------------------------|-----|---------------|
| 1 | 15WF4-003 | Oil pump | 1 | |
| 2 | 15WF4-006 | Big gear for oil pump | 1 | |
| 3 | 15WF4-007 | small gear for oil pump | 1 | |
| 4 | | Screw | 3 | M3X10 GB67-85 |
| 5 | 22T8-005 | Washer | 1 | |
| 6 | 15WF4-004 | Cover for oil pump | 1 | |
| 7 | 22T8-007 | Adjusting plate for oil pump | 1 | |
| 8 | 22T8-008A | Filter complete | 1 | |
| 9 | 22T8-009 | Screw for oil pump | 3 | |
| 10 | 15WF4-005 | Shaft for oil pump | 1 | |
| 11 | | Screw | 2 | M3X10GB68-85 |
| 12 | 22T8-001 | Oil wick set plate complete | 1 | |
| 13 | 22T8-012 | Screw | 2 | |
| 14 | 22T8-013 | Oil pipe complete for upper shaft | 1 | |
| 15 | 22T8-014 | Oil return pipe | 1 | |
| 16 | 22T8-015 | Oil felt | 1 | |
| 17 | 22T8-016 | Oil return pipe clamp | 1 | |
| 18 | 22T8-004 | Screw | 1 | |
| 19 | 22T8-011B | Oil pipe complete for lower shaft | 1 | |

8: Oil Reservoir and Accessories



8: Oil Reservoir and Accessories

| No. | Part number | Name | Qt. | Remark |
|-----|-------------------------|--------------------------|-------|---|
| 1 | 4WF5-001 | Oil reservoir | 1 | |
| 2 | 22T9-001A ₂ | Screw | 1 | |
| 3 | 22T9-001A ₃ | Washer | 1 | |
| 4 | 22T9-001A ₄ | Gasket(small) | 1 | |
| 5 | 22T9-001A ₅ | Gasket(big) | 1 | |
| 6 | 22T9-001A ₆ | Hinge pin | 1 | |
| 7 | 22T9-001A ₇ | Spring | 1 | |
| 8 | 22T9-001A ₈ | Knee lifter stop bracket | 1 | |
| 9 | 22T9-001A ₉ | Screw | 2 | |
| 10 | 22T9-001A ₁₀ | Nut | 2 | |
| 11 | 22T3-007C | Screw | 1 | |
| 12 | 22T9-003B | Knee lifter prop bar | 1 | |
| 13 | 22T9-003B | Connector | 1 | |
| 14 | 22T9-003B | Screw | 2 | |
| 15 | 22T9-003B | Bent rod | 1 | |
| 16 | 22T9-003B | Bell | 1 | |
| 17 | 22T9-003B | Bell bracket | 1 | |
| 18 | 22T9-003B | Screw | 1 | |
| 19 | 22T9-003B | Pat | 1 | |
| 20 | | Split stop ring | 1 | Stop ring 9 GB896-76 |
| 21 | | Belt guard complete | 1 | |
| 22 | 1KT6-001 | Screw(small) | 2 | M4X8 GB67-85 |
| 23 | | Washer | 2 | GB848-85-4 |
| 24 | | Screw(big) | 2 | M5X12GB67-85 |
| 25 | S14420020 | Thread winder complete | 1 | |
| 26 | GJX-2 | Spool stand complete | 1 | |
| 27 | 22T9-017 | Oil tank | 1 | |
| 28 | 22T9-013 | Magnet | 1 | |
| 29 | 33TF-011 | Oil pot | 1 | |
| 30 | 22T9-009 | Cushion(big) | 2 | |
| 31 | 22T9-010 | Cushion(small) | 2 | |
| 32 | 33T1-004 | Rubber coat | 2 | |
| 33 | 22T9-007E ₂ | Hinge | 2 | |
| 34 | 33TF-010 | Parts bag | 1 | |
| 35 | 33T1-027 | Bobbin | 5 | |
| 36 | | V-type belt | 1 | O-type 1041 |
| 37 | 33TF-015 | Needle | 1 big | DPX17 2 ³ (GC0302CX 2 ⁵) |
| 38 | 33TF-012 | Screwdriver(big) | 1 | |
| 39 | 33TF-013 | Screwdriver(middle) | 1 | |
| 40 | 33TF-014 | Screwdriver(small) | 1 | |
| 41 | 33TF-017 | Wood screw | 4 | GB5282-85 ST4.8X19 |
| 42 | 33TF-018 | Washer | 2 | GB848-85-6 |