

零件本 PARTS LIST

F300A

ONE THREAD

單線

F302A

TWO THREAD

雙線

PORTABLE BAG CLOSER

手提式縫口袋機

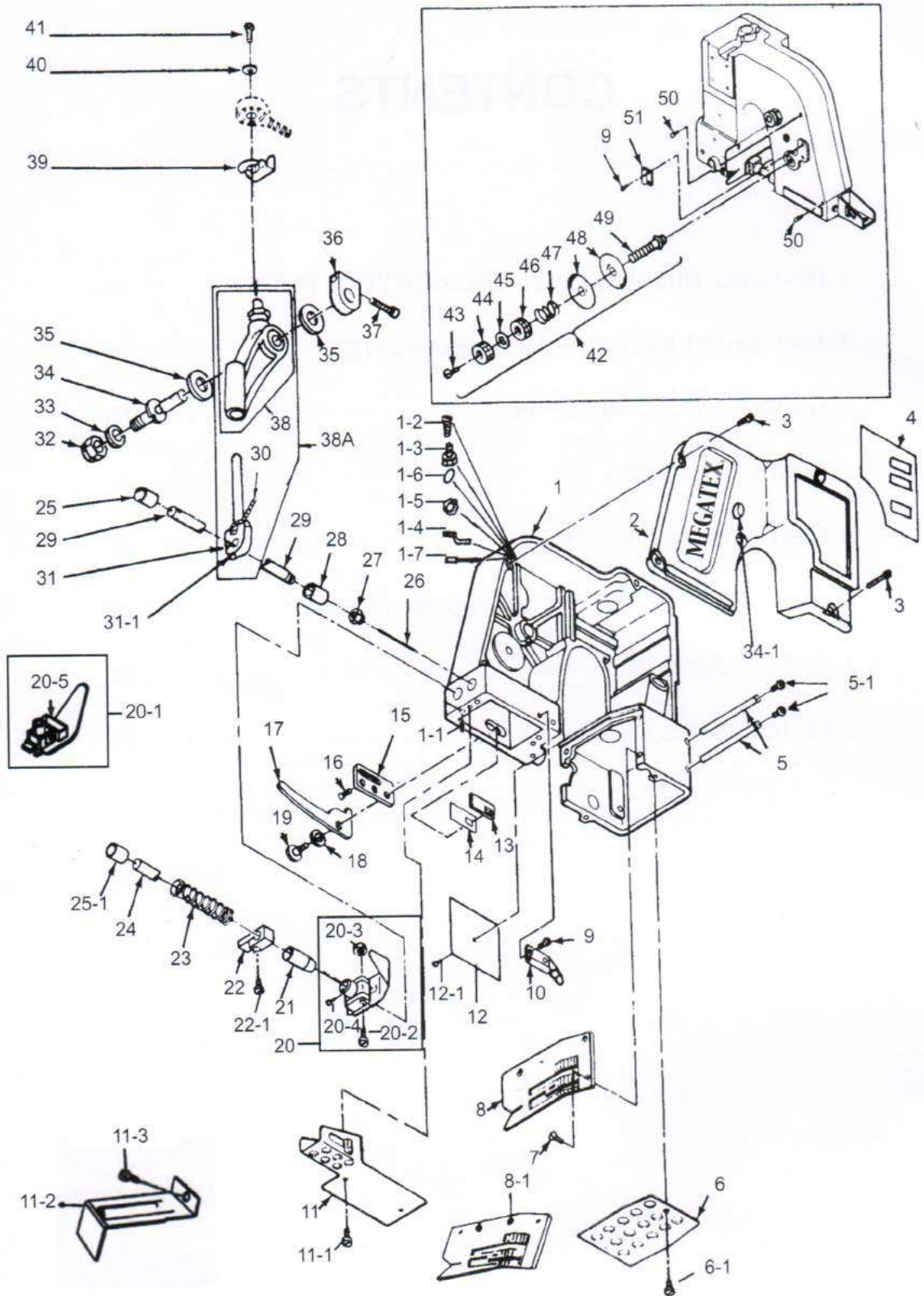


耀鴻縫製機械企業有限公司
MEGATEX SEWING MACHINE CO., LTD.

CONTENTS

1. HOUSING, NEEDLE LEVER, PRESSER FOOT PLATE A	12
2. MAIN SHAFT & LOOPER ASSEMBLY PLATE B	14
3. HANDLE & ELECTRIC DRIVE	16
4. PARTS FOR F302A	18
5. PARTS FOR MF300A, MF302A	20
6. PARTS FOR FN600A, FN602A, FF300A, FF302A	22
7. ACCESSORY BAG	24
8. MOTOR PARTS	26

1. HOUSING, NEEDLE LEVER, PRESSER FOOT PLATE A



1. HOUSING, NEEDLE LEVER, PRESSER FOOT PLATE A

ILLUSTRATED PARTS BREAKDOWN
ORDER BY NUMBER

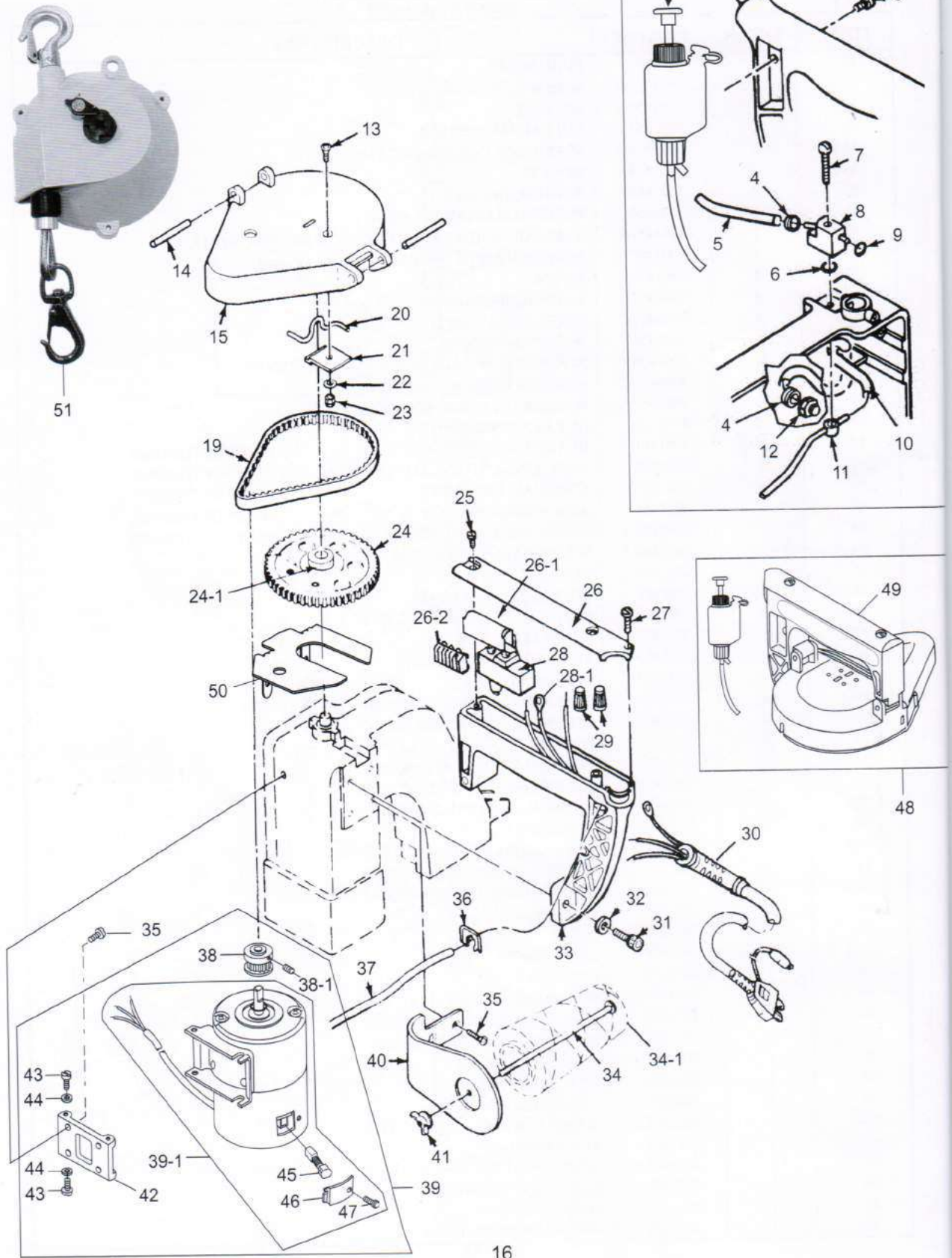
ITEM	QUAN.	PART NO.	DESCRIPTION
1	1	3001201	ASSY.,HOUSING & COVERW/BUSHINGS
1-1	9	3001201-1	SCREW,SOC.SET#8-32N.C.X3/16(SCREW FPR ALL BUSHINGS)
1-2	1	3001201-2	SPRING
1-3	1	6001218	JOINT
1-4	1	3001201-4	OIL PIPE
1-5	1	6001219	NUT
1-6	1	6001217	WASHER
1-7	1	3001201-7	OIL TUBE
2	1	3001202	COVER,HOUSING.(PART OF ITEM#1)
3	6	3001203	SCREW,FILLISTER HD,#8-32N.C.X5/8
4	1	3001204	NAMEPLATE
5	2	3001205	STUD,FEED DOG,CARRIER SLIDE
5-1	4	3001205-1	SCREW,SOC.BUTTON HD.-#10-32N.F.X1/4
6	1	3001206	COVER,LOOPER
6-1	1	3001206-1	STUD,LOOPER COVER
7	3	3001207	SCREW,FLATHD.-#6/40N.E.X3/8
8	1	3001208	PLATE,THROAT-STANDARD
8-1	1	3001208-1	PLATE,THROAT TAPING
9	4	3001209	SCREW,BINDING HD.-6/32N.C.X3/16
10	1	3001210	TUBE,THREAD GUIDE(FRONT)
11	1	3001211	GUARD,NEEDLE BAR
11-1	2	3001211-1	SCREW,BINDING HD.-#8-32N.C.X1/4
11-2	1	3001211-2	GUARD,NEEDLE BOB FOR CE
11-3	1	3001211-3	SCREW #8-32N.L.X3/8
12	1	3001212	PLATE,COVER
12-1	1	3001212-1	SCREW,BINDING HD.-#10-32N.E.X1/4
13	1	3001213	COVER,SLIDE PAD
14	1	3001214	PAD,SLIDE
15	1	3001215	PLATE,LEVER
16	2	3001216	SCREW,FLATHEAR-#8-32N.C.X5/16
17	1	3001217	LEVER,LIFTER-PRESSER FOOT
18	1	3001218	WASHER,SPRING
19	1	3001219	SCREW,PIVOT
20	1	3001220A	ASSY.,PRESSER FOOT
20-1	1	3001220A-1	PRESSER FOOT,TAPING & PLASTIC
20-2	1	3001220A-2	BOLT,HINGING
20-3	2	3001220A-3	NUT
20-4	1	3001220A-4	SCREW,SOC.SET-#8-32N.C.X3/16(FLAT POINT)
20-5	1	3001220A-5	BOLT,HINGING CE
21	1	3001221	BUSHING,LOWER
22	1	3001222	LIFTER,PRESSER FOOT
22-1	1	3001237	SCREW,SOCKET CAP-#6-40N.F.X1/2
23	2	3001223	SPRING,PRESSER BAR
24	1	3001224	PRESSER BAR
25	1	3001225	BUSHING,NEEDLE BAR & UPPER
25-1	1	3001225-1	BUSHING,PRESSER BAR-UPPER
26	1	3001226	NEEDLE
27	1	3001227	NUT,NEEDLE BAR
28	1	3001228	BUSHING,NEEDLE BAR-LOWER
29	1	3001229	NEEDLE BAR
30	1	3001230	OIL FELT
31	1	3001231	ASSY.,CLAMP-NEEDLE BAR
31-1	2	3001466-1	SCREW
32	1	3001232	NUT,LOCK(NYLOK SPECIAL)-3/8-24N.C.
33	1	3001233	WASHER,FLAT
34	1	3001234	PIN,PIVOT
34-1	1	3001234-A	BUSHING
35	5	3001235	WASHER,THRUST-NEEDLE LEVER
36	1	3001236	CLAMP,PIVOT-NEEDLE
37	2	3001237	SCREW,SOC.CAP-#6-40N.F.X5/8
38A	1	3001238A	ASSY,NEEDLE BAR LEVER WITH CLAMP
38	1	3001238	ASSY,CLAMP-NEEDLE BAR LEVER
39	1	3001239	SPRING
40	1	3001240	WASHER,FLAT-#10
41	1	3001241	SCREW,HEX HD.#10-32N.F.X1/2
42	1	3001242	ASSY,TENSION-COMPLETE
43	1	3001243	SCREW,HEX HD.-#6-40N.F.X3/8 (PART OF ITEM#42)
44	1	3001244	NUT TENSION-UPPER (PART OF ITEM#42)
45	1	3001245	WASHER,LOCK-TENSION (PART OF ITEM#42)
46	1	3001246	NUT TENSION-LOWER (PART OF ITEM#42)
47	1	3001247	SPRING,TENSION (PART OF ITEM#42)
48	2	3001248	DISC,TENSION (PART OF ITEM#42)
49	1	3001249	STUD,TENSION (PART OF ITEM#42)
50	2	3001250	EYELET,THREAD PULL OFF (PART OF ITEM#42)
51	1	3001251	TUBE,THREAD GUIDE-REAR (PART OF ITEM#42)

2. MAIN SHAFT & LOOPER ASSEMBLY PLATE B

ILLUSTRATED PARTS BREAKDOWN
ORDER BY NUMBER

ITEM	QUAN.	PART NO.	DESCRIPTION
52	1	3001452	MAIN SHAFT
52-1	1	3001452-1	SCREW
52-2	1	3001452-2	OIL FELT
53	1	3001453	COLLAR,MAIN SHAFT
53-1	1	3001453-1	SCREW,SOC.CAP-#5/40N.C.X3/8
54	1	3001454	RING."0"
55	2	3001455	WASHER,THRUST
56	1	3001456	BUSHING,MAIN SHAFT-REAR
57A	1	3001457A	ASSY.CON ROD & ECCENTRIC WITH BEARING RDD END.
57	1	3001457	ASSY.CON ROD & ECCENTRIC
57-1	1	3001480	SCREW
57-2	1	3001457-2	SCREW(CONE POINT)
57-3	1	3001457-3	SCREW(FLAT POINT)
58	1	3001458	ASSY.CAM-LOOPER.
58-1	1	3001458-1	SCREW,SOC.SET-#10/32N.F.X5/8(CONE POINT)
58-2	1	3001458-2	SCREW,SOC.SET-#10/32N.F.X1/2
59	1	3001459	WASHER.INTERNAL TOOTH-5/16
60	1	3001460	NUT.HEX-SPECIAL
61	1	3001461	BEARING,ROD END (PART OF ITEM#62)
62	1	3001462	ASSY.ARM & STUD-CAM FOLLOWER (PART OF ITEM#62)
63	1	3001463	STUD,CAM FOLLOWER (PART OF ITEM#62)
64	1	3001464	ARM.FOLLOWER-CAM (PART OF ITEM#62)
64-1	1	3001464-1	SCREW,SOC.CAP-#5-40N.C.X5/8 (PART OF ITEM#62)
64-2	1	3001464-2	WASHER.FLAT-#5(SPECIAL)
65	1	3001465	NUT.HEX-SPECIAL
66	2	3001466	COLLAR,LOOPER SHAFT
66-1	3	3001466-1	SCREW,SOC.CAP-#5-40N.C.X1/2
67	1	3001467	SHAFT,LOOPER
68	1	3001468	BUSHING,LOOPER SHAFT
69	1	3001469	HOLDER,LOOPER
69-1	1	3001469-1	SCREW,SOC.SET-#8-32N.C.X3/16 (FLAT POINT)
69-2	2	3001469-2	SCREW,SOC.CAP-#5-40N.C.X1/4
70	1	3001470	LOOPER
71	1	3001471	BUSHING,MAIN SHAFT-FRONT
72	1	3001472	SCREW,HEX H.D.-#8-32N.C.X5/15
73	2	3001473	WASHER,INTERNAL TOOTH-#8
74	1	3001474	CLIP,ANGLE
75A	1	3001475A	ASSY.CARRIER BLOCK WITH SLIDE
75	1	3001475	CARRIER BLOCK,FEED DOG
75-1	4	3001475-1	SCREW,SOC.SET-#6-40N.F.X3/8(FLAT POINT)
76	1	3001476	WASHER,FELT
77	1	3001477	SLIDE
77-1	1	3001477-1	KNIFE SHAFT
78	1	3001478	FEED DOG
79	1	3001479	WASHER,FLAT-#8-SPECIAL
80	1	3001480	SCREW,SOC.CAP-#8-32N.C.X1
81	1	3001481	SCREW,HEX.HD-#10-32N.F.X3/8
82	1	3001482	WASHER,LOCK-#10
83	1	3001483	BRACKET,KNIFE
84	1	3001484	KNIFE,STATIONARY
84-1	2	3001484-1	SCREW,FLAT HD.-#3-48N.C.X5/16
85	1	3001485	KNIFE,MOVING
85-1	2	3001485-1	SCREW,FLAT HD.-#3-48N.C.X3/16
86	1	3001486	BUSHING,KNIFE SHAFT
87	1	3001487	SHAFT,KNIFE
88	1	3001488	SPRING,KNIFE-TENSION

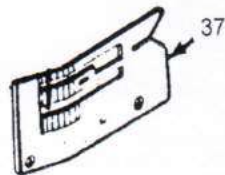
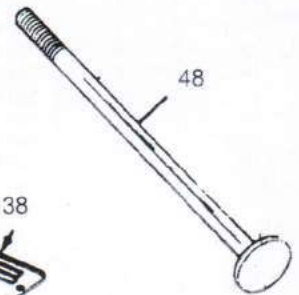
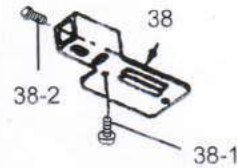
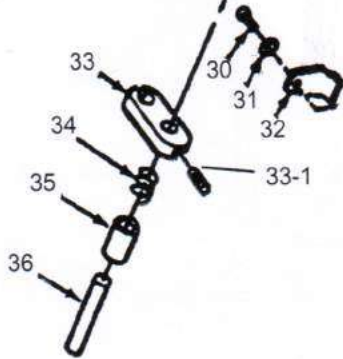
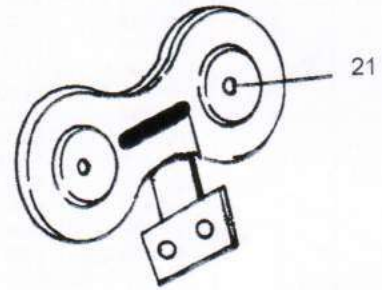
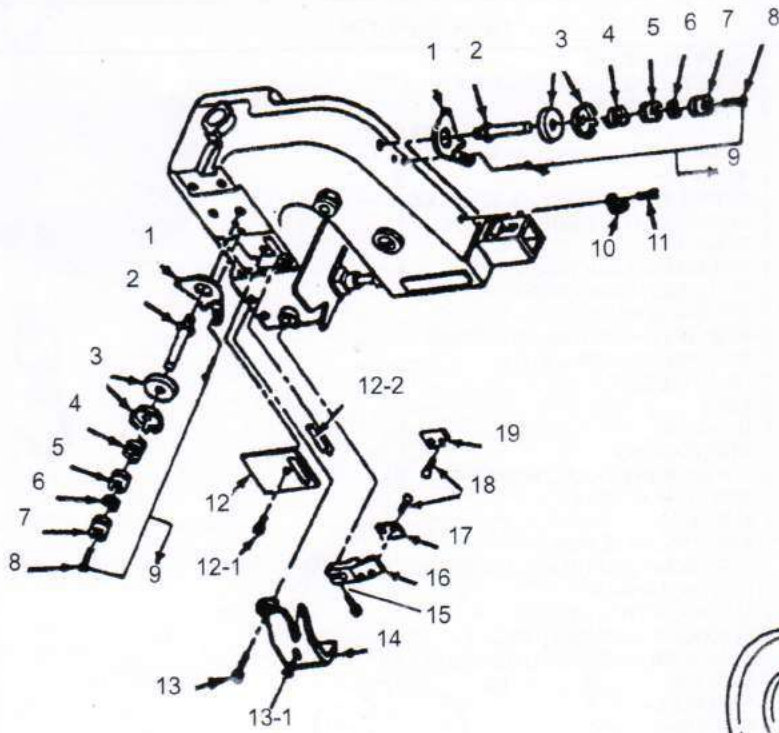
3. HANDLE & ELECTRIC DRIVE



3. HANDLE & ELECTRIC DRIVE

ITEM	QUAN.	PART NO.	DESCRIPTION
1	1	3001601	ASSY.,PUMP-OIL
3	1	3001603	SCREW,BINDING HD,#8-32N.C.X1/2
4	2	3001604	SPRING,GARTER
5	1	3001605	TUBING,OIL PUMP-PLASTIC(4X6X10.5)
5-1	1	3001605-1	TUBING,OIL PUMP-PLASTIC(4X6X20.5)
6	1	3001606	RING,"0"
7	1	3001607	SCREW BINDING HD,-#8-32N.C.X1/4
8	1	3001608	MANIFOLD,OUTSIDE
9	1	3001609	RING,"0"
10	1	3001610	TUBING,PLASTIC(4X6X11.5)
11	1	3001611	WELDMENT,MANIFOLD-INSIDE
12	1	3001612	FITTING,BARBED
13	1	3001216	SCREW,FLAT HD,-#8-32N.C.X5/16
14	2	3001614	PIN,SPRING-1/4DIA,X11/2
15	1	3001615	GUARD,BELT
19	1	3001619	BELT
20	1	3001620	HANGER
21	1	3001621	CLIP,HANGER
22	1	3001473	WASHER,INTERNAL TOOTH-#8
23	1	3001623	NUT,HEX-#8-32N.C.
24	1	3001624	PULLEY
24-1	2	3001624-1	#10-32NX 3/8 SCREW
25	2	3001625	SCREW,ROUND HD,#10-32N.F.X3/8
26	1	3001626	COVER,HANDLE
26-1	1	3001626-1	MICRO SWITCH COVER
26-2	1	3001626-2	FLEXIBLE TERMINAL BLOCK
27	1	3001627	SCREW,FILLISTER HD,#4-40NH.C.X3/4
28	1	3001628	SWITCH
28-1	2	3001628-1	END PLUG
29	4	3001629	WIRE NUT
30	1	3001630	CORD,SET FOR 110V
30-1	1	3001630-1	CORD,SET FOR 12V, 24V
30-2	1	3001630-2	CORD,SET FOR 220V, 240V "CE"
30-3	1	3001630-3	CORD,SET FOR 220V, 240V
31	2	3001631	SCREW,SOC.CAP-1/4-20N.C.X3/4
32	2	3001632	WASHER,SPRING-1/4
33	1	3001633	HANDLE
34	1	3001634	BOLE,THREAD-CLAMPING
34-1	1	3001634-1	THREAD
35	6	3001635	SCREW,SOC.FLAT HD-#10-32N.F.X3/8
36	1	3001636	STAIN RELEIF
37	1	3001637	MOTORLEAD-3 WIRE SJO
38	1	3001638	PULLEY MOTOR
38-1	2	3001638-1	SCREW
39	1	3001639	UNIVERSAL MOTOR ASM (110V)
	1	3001639-1	UNIVERSAL MOTOR ASM (220V)
	1	3001639-2	UNIVERSAL MOTOR ASM (12V)
	1	3001639-3	UNIVERSAL MOTOR ASM (240V)
	1	3001639-4	(UNIVERSAL MOTOR ASM (24V)
39-1	1	3001639M	UNIVERSAL MOTOR (110V)
	1	3001639-1M	UNIVERSAL MOTOR (220V)
	1	3001639-2M	UNIVERSAL MOTOR (12V)
	1	3001639-3M	UNIVERSAL MOTOR (240V)
	1	3001639-4M	UNIVERSAL MOTOR (24V)
40	1	3001640	STAND,THREAD
41	1	3001641	NUT,WING-1/4-20N.C.
42	1	3001642	ASSY.HINGE MOTOR MOUNT
43	4	3001643	SCREW,SEMS-PAN HD.
44	1	3001644	WASHER,FOR MOTOR
45	1	3001645	CARBON BRUSH FOR AC MOTOR(SIZE:6X8X15)
45-1	1	3001645-1	CARBON BRUSH FOR DC MOTOR(SIZE:6X8X15)
46	1	3001646	CAP FOR MOTOR
47	1	3001647	SCREW(WITH WASHER)
48	1	3001648	COMPLETE HANDLE WITH OILER
49	1	3001649	HANDLE COMPLETE
50	1	3001650	PULLEY SAFE LOWER GUARD COVER (FOR CE) (OPTIONAL)
51	1	SB-5K	SPRING BALANCER FOR 3-5KGS
51-1	1	SB-7K	SPRING BALANCER FOR 5-7KGS
51-2	1	SB-9K	SPRING BALANCER FOR 6-9KGS

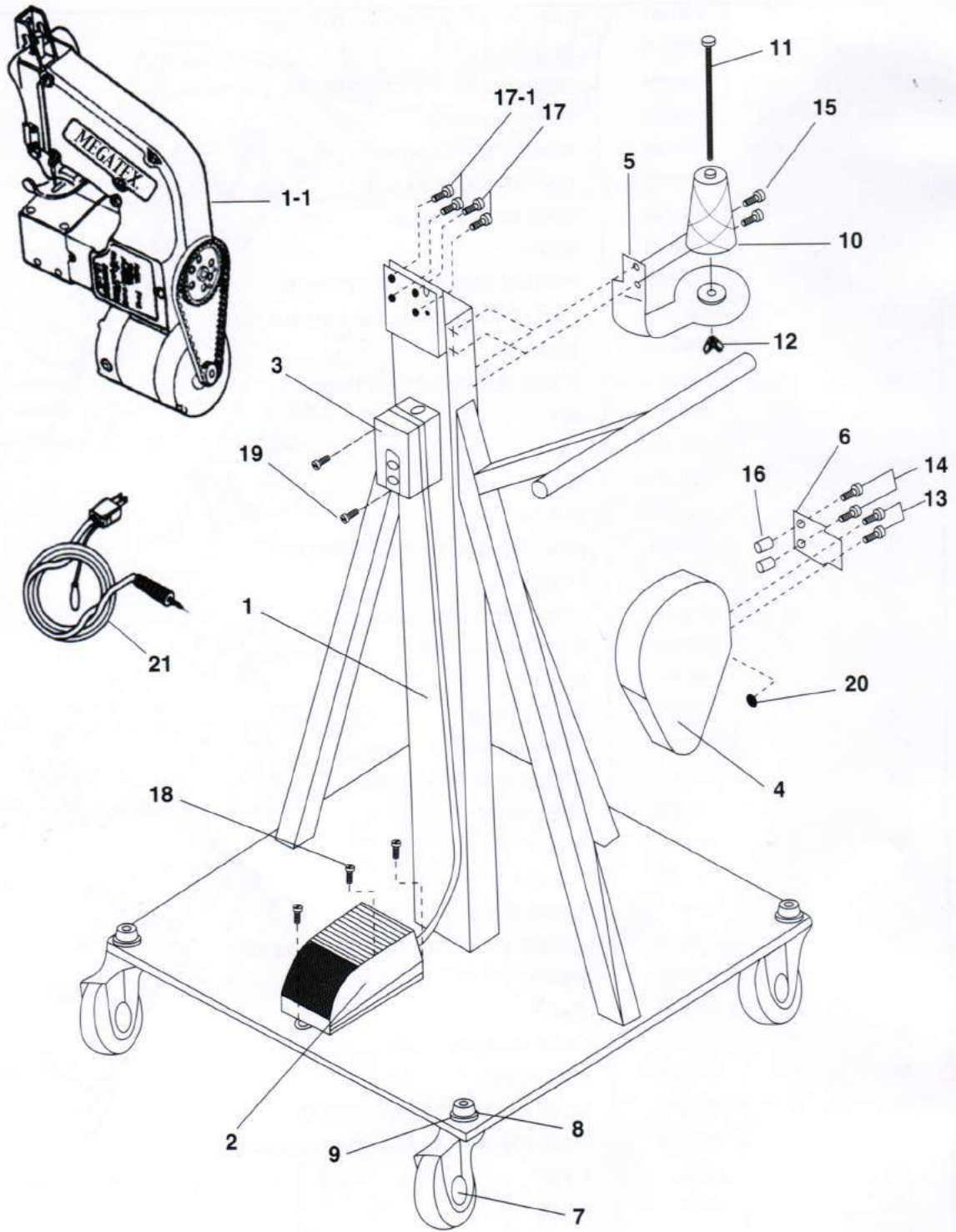
4. PARTS FOR F302A



4. PARTS FOR F302A

ITEM	QUAN.	PART NO.	DESCRIPTION
1	2	3001801	THREAD GUIDE FOR TWO THREADS
2	2	3001249	TENSION STUD
3	4	3001803	TENSION DISC FOR TWO THREAD
4	2	3001247	TENSION SPRING
5	2	3001246	TENSION NUT-LOWER
6	2	3001245	TENSION WASHER LOCK
7	2	3001244	TENSION NUT-UPPER
8	2	3001243	SCREW
9	2	3001809	TENSION ASSY FOR TWO THREAD
10	1	3001810	THREAD ANGLE CLIP FOR TWO THREAD
11	1	3001243	SCREW
12	1	3001812	COVER PLATE FOR TWO THREAD
12-1	1	3001212-1	SCREW
12-2	1	3001812-2	PIN
13	2	3001211-1	SCREW
13-1	1	3001212-1	SCREW
14	1	3001814	KNIFE GUARD FOR TWO THREAD
15	1	3001466-1	SCREW
16	1	3001816	KNIFE ARM FOR TWO THREAD
17	1	3001484	KNIFE STATIONERY
18	1	3001484-1	SCREW
19	1	3001485	MOVING KNIFE
21	1	3001821	THREAD STAND
24	1	3001824	LOOPER FOR TWO THREAD
26	1	3001452	MAIN SHAFT
30	1	3001472	SCREW
31	1	3001473	WASHER
32	1	3001474	ANGLE CLIP
33	1	3001833	ROCKER KNIFE ARM FOR TWO THREAD
33-1		3001833-1	SCREW
34	1	3001488	SPRING
35	1	3001486	KNIFE SHAFT BUSHING
36	1	3001836	KNIFE SHAFT
37	1	3001837	NEEDLE PLATE FOR TWO THREAD
38	1	3001838	NEEDLE BAR GUARD FOR TWO THREAD
38-1	2	3001211-1	SCREW
38-2	1	3001211-3	SCREW
41	1	3001841	FEED DOG
47	1	3001847	PRESSER FOOT ASSY FOR TWO THREAD
48	2	3001848	THREAD CONE ROD FOR TWO THREAD

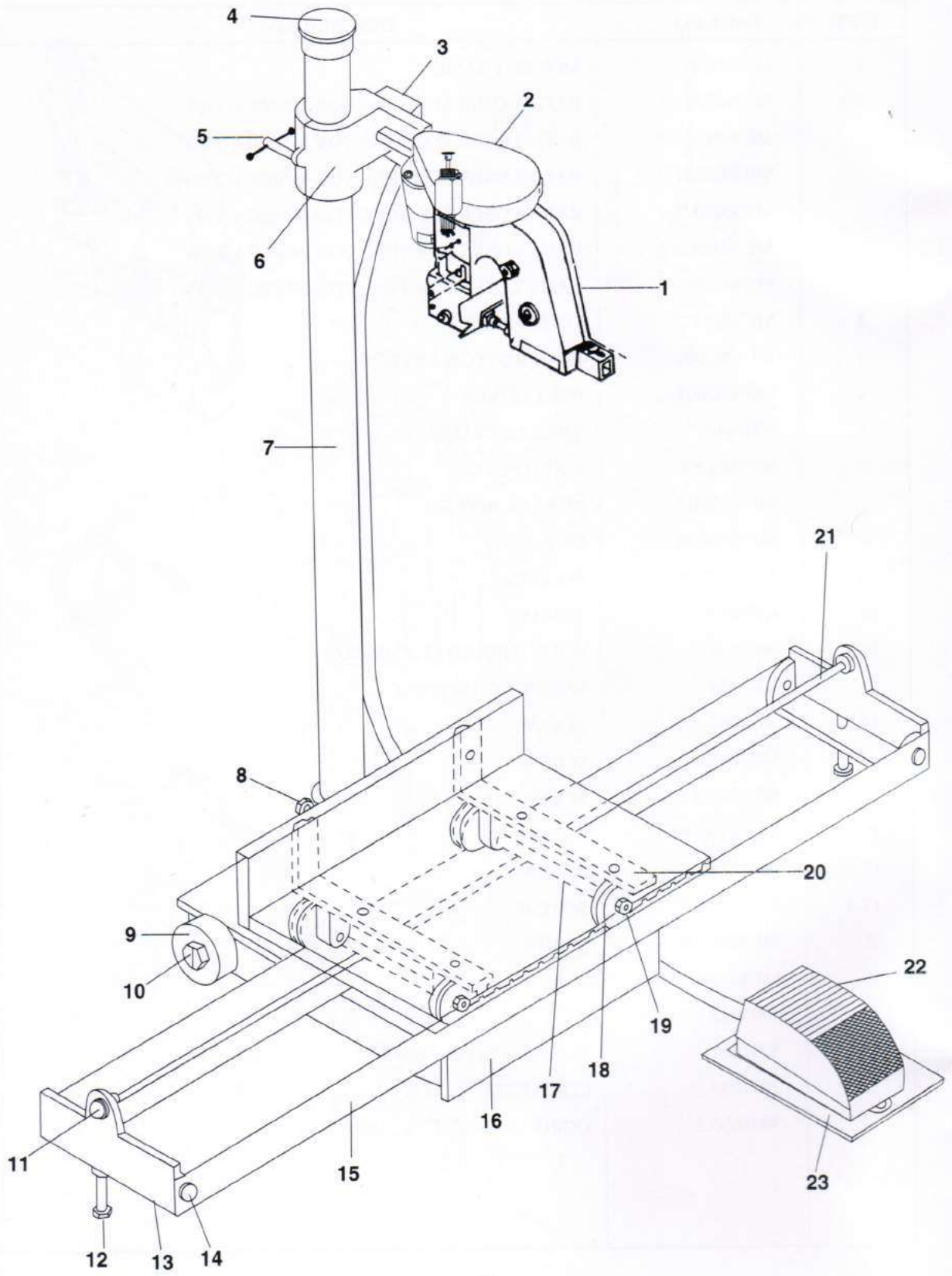
5. PARTS FOR MF300A, MF302A



5. PARTS FOR MF300A, MF302A

ITEM	PART NO.	DESCRIPTION
1	MF3002001	MOVED FRAME
1-1	MF3002001-1	BAG CLOSER MACHINE FOR MN600A-110V
	MF3002001-2	BAG CLOSER MACHINE FOR MN600A-220V
	MF3002001-3	BAG CLOSER MACHINE FOR MN600A-240V
	MF3002001-4	BAG CLOSER MACHINE FOR MN602A-110V
	MF3002001-5	BAG CLOSER MACHINE FOR MN602A-220V
	MF3002001-6	BAG CLOSER MACHINE FOR MN602A-240V
2	MF3002002	FOOT PEDAL
3	MF3002003	PUSH BUTTON SWITCH
4	MF3002004	BELT COVER
5	3001640	THREAD STAND
6	MF3002006	FIXED PLATE
7	MF3002007	RUBBER WHEEL
8	MF3002008	NUT
9	MF3002009	WASHER
10	6001005	THREAD
11	3001634	BOLT THREAD CLAMPING
12	3001641	NUT WING 1/4"-20N.C.
13	3001211-3	SCREW
14	MF3002014	SCREW
15	MF3002015	SCREW
16	MF3002016	BUSHING
17	3001631	SCREW
17-1	3001625	SCREW
18	MF3002018	SCREW
19	MF3002019	SCREW
20	3001623	NUT
21	3001630	CORD, SET FOR 110V
	3001630-2	CORD,SET FOR "CE"
	3001630-3	CORD,SET FOR 220V, 240V

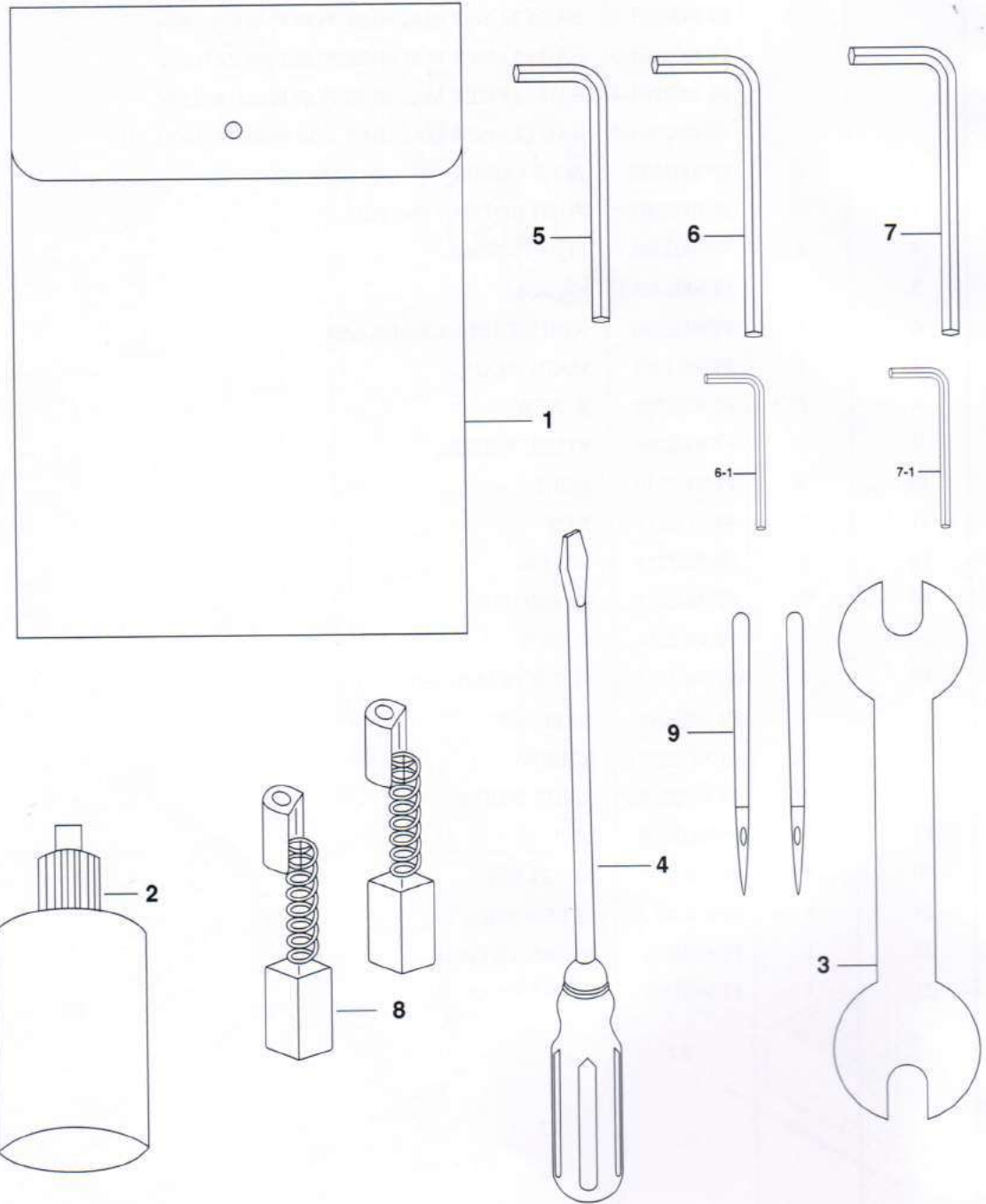
6. PARTS FOR FN600A, FN602A, FF300A, FF302A



6. PARTS FOR FN600A, FN602A, FF300A, FF302A

ITEM	QUAN.	PART NO.	DESCRIPTION
1	1	FF3002201	BAG CLOSER MACHINE FOR FN600A-110V
		FF3002201-1	BAG CLOSER MACHINE FOR FN600A-220V
		FF3002201-2	BAG CLOSER MACHINE FOR FN600A-240V
		FF3002201-3	BAG CLOSER MACHINE FOR FN602A-110V
		FF3002201-4	BAG CLOSER MACHINE FOR FN602A-220V
		FF3002201-5	BAG CLOSER MACHINE FOR FN602A-240V
2	1	FF3002202	BELT COVER
3	1	FF3002203	PUSH BOTTON SWITCH
4	1	FF3002204	PLASTIC CAP
5	1	FF3002205	HANDLE
6	1	FF3002206	ADJUSTABLE CRANK SET
7	1	FF3002207	MAIN SHAFT
8	2	FF3002208	SCREW
9	2	FF3002209	STEEL WHEEL
10	2	FF3002210	BOLT
11	2	FF3002211	NUT
12	2	FF3002212	SCREW
13	2	FF3002213	FRAME SET
14	4	FF3002214	SCREW
15	2	FF3002215	SLIDE FRAME SET
16	1	FF3002216	BASE SET
17	2	FF3002217	SCREW
18	4	FF3002218	SLIDE WHEEL
19	4	FF3002219	NUT
20	1	FF3002220	FIXED SET
21	1	FF3002221	SCREW SHAFT
22	1	FF3002222	PEDAL SWITCH
23	1	FF3002223	PEDAL BASE

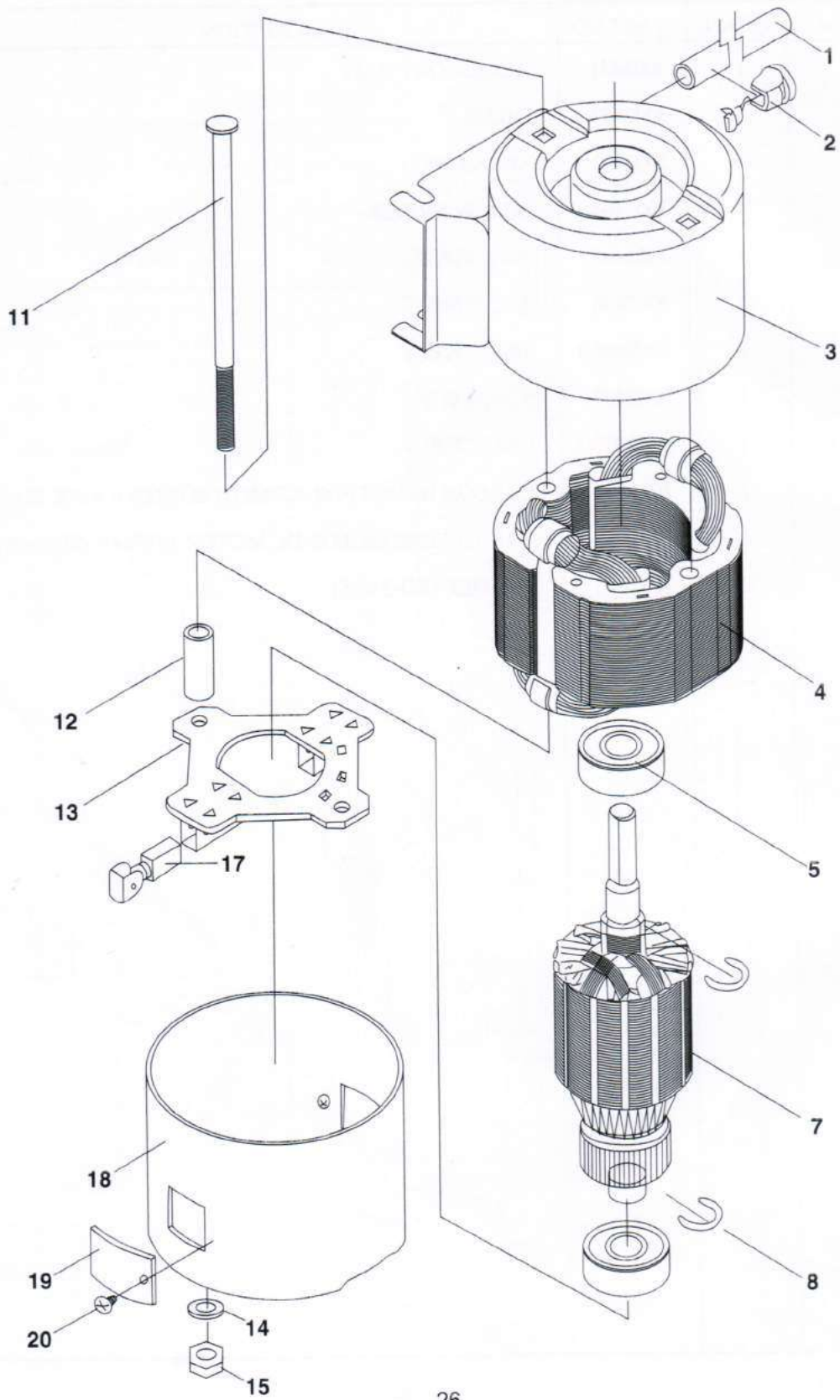
7. ACCESSORY BAG



7. ACCESSORY BAG

ITEM	QUAN.	PART NO.	DESCRIPTION
1	1	3002401	ACCESSORY BAG
2	1	3002402	OILER
3	1	3002403	SPANNER
4	1	3002404	SCREW DRIVER
5	1	3002405	2.0 六角板手
6	1	3002406	3/32 六角板手
6-1	1	3002406-1	7/64 六角板手
7	1	3002407	5.0六角板手
7-1	1	3002407-1	9/64 六角板手
8	2	3001645	CARBON BRUSH FOR AC MOTOR (SIZE:6 X 8 X 15)
	2	3001645-1	CARBON BRUSH, FOR DC MOTOR 12V/24V (SIZE:6X8X15)
9	2	3001226	NEEDLE (FD-5 #25)

8. MOTOR PARTS



8. MOTOR PARTS

ITEM	QUAN.	PART NO.	DESCRIPTION
1		3002601	CORD
2		3002602	STRAIN RELIFE BUSHINGS
3		3002603	CASE A
4		3002604	STATOR ASSY FOR 110V
		3002604-1	STATOR ASSY FOR 220V
		3002604-2	STATOR ASSY FOR 240V
		3002604-3	STATOR ASSY FOR 12V
		3002604-4	STATOR ASSY FOR 24V
5		3002605	BALL BEARING
7		3002607	ARMATURE ASSY FOR 110V
		3002607-1	ARMATURE ASSY FOR 220V
		3002607-2	ARMATURE ASSY FOR 240V
		3002607-3	ARMATURE ASSY FOR 12V
		3002607-4	ARMATURE ASSY FOR 24V
8		3002608	C RING
11		3002611	SCREW
12		3002612	PIPE
13		3002613	PC PLATE
14		3002614	WASHER
15		3002615	NUT
17		3001645	CARBON BRUSH FOR AC MOTOR
		3001645-1	CARBON BRUSH FOR DC MOTOR
18		3002618	CASE B
19		3001646	CAP FOR MOTOR
20		3001647	SCREW



MEGATEX®

耀鴻縫製機械企業有限公司
MEGATEX SEWING MACHINE CO., LTD.